

QuickPort® 6-Port DIN Rail-Mount Box

APPLICATION

The compact QuickPort 6-Port DIN Rail-Mount Box provides an ideal network patching solution for industrial automation and control panels. The box includes a Leviton QuickPort Decora 6-port Insert, and allows for orientation of the 1-3/8 inch cable access port at the top or bottom, thereby increasing flexibility of cabling within a tight control enclosure. The box depth is suitable for Cat 5e or Cat 6 applications.



(connectors sold separately)

SPECIFICATION

The 6-Port DIN Rail-Mount Box shall be field configurable to accept Decora inserts, which can house up to six QuickPort connectors. It shall include a 1-3/8 inch diameter cable access port at one end to accept 1-inch trade conduit bushings and fittings. The rear cover shall be removable and symmetrical such that the front housing can be mounted with cable access port at the top or bottom. Box shall mount to standard and low-profile 35 mm symmetrical DIN rails and 32 mm asymmetrical standard DIN rails and include a disconnect tab. Materials shall be high-impact fire-retardant plastic rated UL 94V-0, and cULus listed under UL 1863 and CAN/CSA-C22.2 No. 182.4.

FEATURES

- Compact patching capability – 6-port QuickPort Decora Insert included (alternate port configurations available: 4164x-00x)
- Insert is compatible with all QuickPort connectors
- Accepts any Decora insert (1 through 6 ports)
- 1-3/8 inch nominal cable access port accepts 1-inch trade conduit fittings — supplied with 1-inch bushing
- Compatible with standard and low-profile 35 mm symmetrical DIN rails and 32 mm asymmetrical DIN rails
- DIN rail adapter disconnect tab enables easy and quick installation and removal

DESIGN CONSIDERATIONS

- Compatible with Cat 5e and Cat 6 connectivity (within cable bend radius capability)
- Large cable access port (1-3/8 inch diameter) improves access and bend radius considerations
- Symmetrical design allows cable access port to be positioned at top or bottom
- Accepts QuickPort Decora inserts and QuickPort blanks (41084-BXB) for unused ports
- Different color connectors available to help identify ports

STANDARDS COMPLIANCE

cULus Listed: UL 1863, CAN/CSA-C22.2 No. 182.4

PHYSICAL SPECIFICATIONS

Dimensions: See page two
Capacity: Up to 6 QuickPort connectors using Decora insert
Cable Access: 1-3/8 inch diameter suitable for 1-inch trade conduit fittings
DIN Rail Sizes: 35 mm symmetrical standard and low profile
32 mm asymmetrical standard
Operating Temp: -10°C to 60°C
Color: Black
Materials: UL 94V-0 high-impact plastic

COUNTRY OF ORIGIN

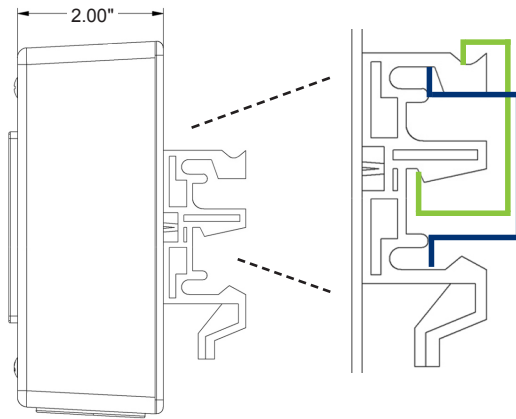
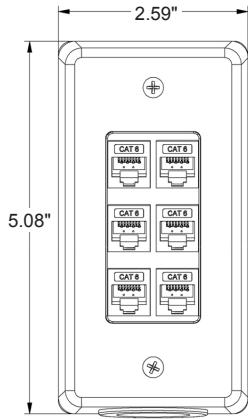
Mexico

WARRANTY INFORMATION

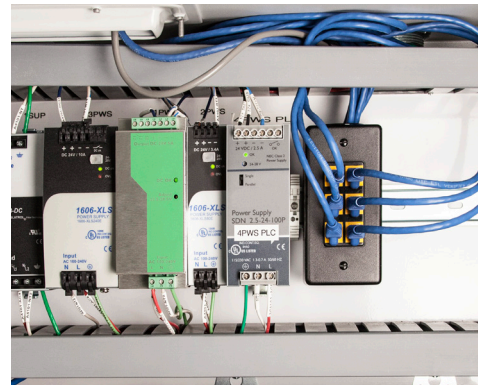
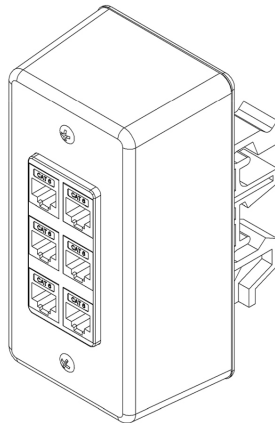
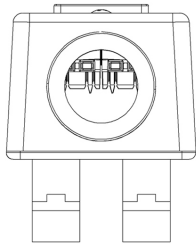
For a copy of Leviton product warranties, visit www.leviton.com/warranty.

ELECTRONIC FILES

For CAD files, typical specs, or technical drawings (.DXF, .DWG), visit www.leviton.com.



41089-6DN



PART NUMBERS

Description	Part No.
QuickPort® 6-Port DIN Rail-Mount Box, Black	41089-6DN

QuickPort connectors not included.

Available in black only.

Page 2 of 2

J14 5108

Leviton Network Solutions
2222 - 222nd St. SE
Bothell, WA 98021-4416

Asia / Pacific
T +1.631.812.6228
E infoasean@leviton.com

Canada
T +1.514.954.1840
E pcservice@leviton.com

Caribbean
T +1.954.593.1896
E infocaribbean@leviton.com

China
T +852.2774.9876
E infochina@leviton.com

Colombia
T +57.1.743.6045
E infocolombia@leviton.com

tel 1-800-824-3005
tel +1-425-486-2222
appeng@leviton.com
www.leviton.com

Europe
T +33.6.8869.1380
E infoeurope@leviton.com

Mexico
T +52.55.5082.1040
E lsamarketing@leviton.com

Middle East & Africa
T +971.4.886.4722
E lmeinfo@leviton.com

South Korea
T +82.2.3273.9963
E infokorea@leviton.com