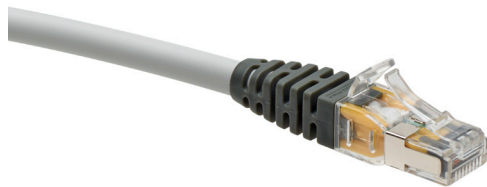


## Cat 6 Shielded Patch Cords

### APPLICATION

Leviton Cat 6 Shielded Patch Cords enable you to get the optimum performance from your cabling system. Our factory-manufactured and tested patch cords offer guaranteed quality and ensure that your system avoids the performance degradation that inferior alternatives will give you at high data rates. The Cat 6 system is classified as Category 6 (Class E) product set that is fully backward compatible with Cat 5e (Class D) products.



### SPECIFICATION

The Cat 6 shielded patch cord shall meet or exceed all electrical performance standards for all internal parameters up to 250 MHz as described in ANSI/TIA-568.2-D and ISO 11801 Cat 6 (Class E). The patch cord shall have S/FTP cable construction with 26-gauge stranded conductors to provide greater flex-life. The patch cords shall be available in standard lengths of 1, 2, 3 and 5 meters. Patch cord plug shall have industry-standard, ANSI/TIA-1096-A compliant 50 micro inches of gold plating.

### MECHANICAL SPECIFICATIONS

Dimensions:	6.0 mm cable OD
Length Tolerance (bracketed length):	+/- 1%
Temp. (Installation):	-20 °C to +70 °C
Temp. (Operating):	0 °C to +50 °C
Temp. (Storage):	-20 °C to +70 °C

### FEATURES & BENEFITS

- Low profile boots for higher density blade connectivity
- Designed to have a repeatable, controlled, and consistent assembly ensuring optimum performance
- LSHF/LSZH materials as standard
- Flexible and robust construction
- Accepts clip-on colored boot markers for network identifications
- Unique design of wire management throughout the connector length to assure consistent performance
- Performance assessed through rigorous quality control in compliance with the demands of industry standards
- Available in a variety of lengths
- Factory made and tested 26-gauge patch cords offer guaranteed quality and optimum performance

### STANDARDS & REGULATIONS

- ANSI/TIA-568-2.D
- ISO 11801 Cat 6
- IEC 60332-1-2, IEC 60754-2, IEC 61034
- IEC 60603-7: Connectors for electronic equipment - Part 7: Detail specification for 8-way, unshielded, free and fixed connectors
- EN61935-2, EN60303-7 Series, ISO IEC11801 & amendments, EN50173-1
- Supports IEEE 802.3 PoE Type 1, 2, 3, 4 (100 watts max)
- Exceeds IEEE 802.3 standard up to 0.5 amps per conductor (100 watts) continuously
- Fully supports the safe delivery of power over LAN cabling described by IEEE 802.3bt (Type 4) and complies with the unmating under electrical load requirements prescribed by IEC 60512-99-002
- Cisco UPOE, UPOE+ (90 watts max)
- Power over HDBaseT™ PoH (95 watts max)
- Maximum cable bundle for 90W and above is 17 cords per ISO/IEC TS 29125

### COUNTRY OF ORIGIN

China

### WARRANTY INFORMATION

For Leviton product warranties, go to [Leviton.com/NS/Warranty](http://Leviton.com/NS/Warranty)

**PRODUCT SPECIFICATIONS**  
**Cat 6 Shielded Patch Cords C6CPCS**

**Cat 6 Shielded Patch Cords C6CPCS**

**REACTION TO FIRE**

Characteristics	IEC Standards
Classification / EuroClass	IEC 60332-1-2
Smoke Emission	IEC 61034
Acid Gas Emission	IEC 60754-2

**PART NUMBER**

Description	Color	Weight	Qty per Pack	Part No.
1.0 m Cat 6 Shielded Patch Cord	Various	45 g	1	C6CPCS010-xxxHB
2.0 m Cat 6 Shielded Patch Cord	Various	85 g	1	C6CPCS020-xxxHB
3.0 m Cat 6 Shielded Patch Cord	Various	125 g	1	C6CPCS030-xxxHB
5.0 m Cat 6 Shielded Patch Cord	Various	205 g	1	C6CPCS050-xxxHB

x = Standard range of colors = Red (188), Blue (488), Green (588), Yellow (688) and Gray (888)

Note: Boots are only available in Slate Gray. If boot coloring is required, a retrofit colored boot clip can be purchased separately (Ref: MMCPCHB00z Where z => 1 = Red, 4 = Blue, 5 = Green, 6 =Yellow)

**C6CPCSaaa-bxxccc**

**CAT 6 SHIELDED PATCH CORDS PART NUMBER**

C6CPC	S (Cord Type)	aaa (Length, Standard)	b (Cable Colors)	x (Boot Color)	ccc (Specialty Tag)
	<ul style="list-style-type: none"> <li>Screened</li> </ul>	<ul style="list-style-type: none"> <li>010 = 1.0 m</li> <li>020 = 2.0 m</li> <li>030 = 3.0 m</li> <li>050 = 5.0 m</li> </ul> <p>Other lengths available upon request up to 60 m.</p>	<p>Cable Color (Standard)</p> <ul style="list-style-type: none"> <li>1 = Red</li> <li>4 = Blue</li> <li>5 = Green</li> <li>6 = Yellow</li> <li>8 = Gray</li> </ul> <p>Colors (Non-Standard):</p> <ul style="list-style-type: none"> <li>2 = Black</li> <li>3 = White</li> <li>7 = Violet</li> <li>9 = Orange</li> </ul> <p>Non-Standard cable colors are available upon request.</p>	<ul style="list-style-type: none"> <li>8 = Gray</li> </ul>	<ul style="list-style-type: none"> <li>H = Halogen Free</li> <li>B = Blade Server Compatible</li> <li>S = Solid</li> </ul>

For further support information, visit [Leviton.com/NS/Support](http://Leviton.com/NS/Support)