

SYSTEM DATA SHEET

CX6050 | CAT 6 STANDARD+ UTP SYSTEM

Standard+ Cat 6 performance, featuring LANmark™-6 cable, offers solid performance and value

- Exceeds ANSI/TIA-568.2-D Cat 6 and ISO/IEC 11801-1 Class E requirements for performance to support IEEE 1000BASE-T networks
- Limited lifetime warranty available when projects are installed by Leviton or Berk-Tek certified contractors
- Error-free performance up to 1 Gigabit Ethernet with full duplex transmission
- Third-party verified by UL
- Cost-effective standard Cat 6 solution

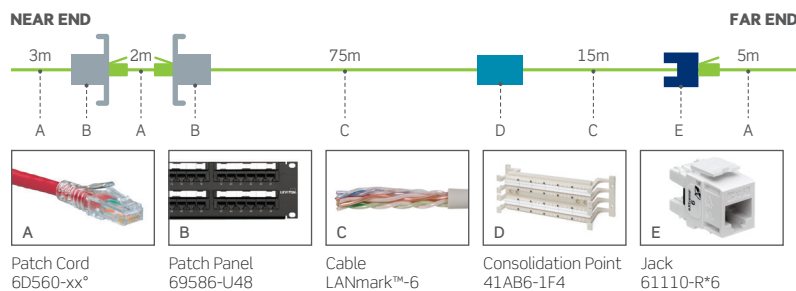
GUARANTEED* SYSTEM PERFORMANCE

CX6050 CAT 6 STANDARD+ UTP SYSTEM CHANNEL MARGIN GUARANTEES*							
Insertion Loss	NEXT	PSNEXT	ACR-F (ELFEXT)	PSACR-F (PSSELFEXT)	Return Loss	ACR-N	PSACR-N
3%	3 dB	3 dB	3 dB	5 dB	2 dB	3 dB	5 dB

*Values represent guaranteed margins to ANSI/TIA-568.2-D standard at 20°C ambient temperature. All parameters comply with ANSI/TIA-568.2-D Cat 6 and ISO/IEC 11801-1 Class E requirements across the entire frequency range. All values represent worst-case margins for 9- to 100-meter channel configurations. System performance margin guarantees are representative of the specific components and topologies as listed on the CX6050 solution data sheet and third-party test report. Contact your Berk-Tek Leviton Technologies technical representative for more information on alternative components and channel configurations. Details at Leviton.com.

Guaranteed System Performance applies exclusively when the system is installed and tested by Leviton Network Solutions Certified Contractors, or Berk-Tek Certified OASIS Integrators. Guaranteed margin values apply at the time of installation.

SYSTEM TEST REPORT TOPOLOGY



RECOMMENDED FOR

1000BASE-T network applications running at 1 Gigabit speeds

Applications requiring compact, high-density design and reduced OD

Network applications in financial, health care, government, transportation, and education environments

PoE standards: IEEE 802.3af, 802.3at, 802.3bt (Type 3), and Cisco UPoE up to 60 watts

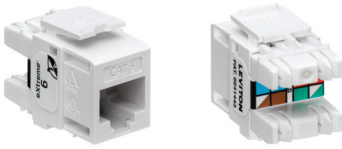
Networks with high bandwidth utilization requirements

AV systems for high-end conference rooms and classrooms

CAT 6 STANDARD+



The Converged Application (CA) Score measures how a cabling system will perform under the strain of future demand. Please see our Application Note and FAQ at BerkTekLevitonTechnologies.com/CAScore.



LEVITON JACKS

EXTREME® CAT 6 COMPONENT-RATED QUICKPORT® JACKS

- Exceed requirements for Category 6 described in ANSI/TIA-568.2-D and Class E requirements described in ISO/IEC 11801-1
- Patented Retention Force Technology™ protects against time damage and maintains contact force between plug and jack, preventing arcing from intermittent disconnects in PoE applications
- Circuit board technology for exceptional high-frequency operation
- Gas-tight insulation displacement contacts provide excellent conductor retention and resistance to surface-contact oxidation for life of the system
- Pair Separation Tower design facilitates separation of conductors and minimizes untwisting
- Patented dual-layer wiring label simplifies punchdown and reduces rework
- 90 or 180 degree bi-directional entry eases cable bend radius in back boxes
- Supports Power over Ethernet (PoE) — see individual product specifications sheets for full capabilities
- Proudly manufactured in the U.S.



LEVITON PATCH PANELS

CAT 6 110-STYLE AND QUICKPORT PATCH PANELS

- Exceed requirements for Category 6 described in ANSI/TIA-568.2-D and Class E requirements described in ISO/IEC 11801-1
- 110-Style available in flat and angled configurations
- QuickPort available in flat, angled, recessed, recessed angled, and Zero-U configurations
- Gas-tight insulation displacement contacts provide excellent conductor retention and resistance to surface-contact oxidation for life of the system
- 110-Style patch panels include color codes for T568A/B wiring schemes
- Magnifying lens on select models ensures visibility of port labels



LEVITON PATCH CORDS

ATLAS-X1™ CAT 6 SLIMLINE BOOT UTP PATCH CORDS

- Tested and verified for TIA Category 6 component requirements
- 24-gauge stranded for maximum flexibility
- Nominal outer diameter of .224" to reduce cable pathways in racks and cabinets
- SlimLine boot supports high-density patching and extraction with extended-reach latch release
- Made-to-order custom lengths are quickly available for top-of-rack, end-of-row, or general network patching
- Country of Origin is U.S., manufactured using Berk-Tek cable



BERK-TEK CABLE

LANMARK™ - 6 CABLE

- Unique fillerless design reduces diameter to approaching Cat 5e dimensions for easy installation (0.224" OD for CMP)
- Provides additional usable bandwidth for future applications
- ETL LANmark Verified beyond ANSI/TIA-568.2-D Category 6 performance
- Independently verified headroom guarantees ensure consistent performance
- 1,500 ft. *smartPAK* packaging option reduces waste and increases installation efficiency
- Delivered in compact, strong, easy-to-identify boxes
- UL/ETL Listed
- 24 gauge
- Proudly manufactured in the U.S.

PART NUMBERS - Common part numbers shown. Many additional colors, lengths, and other options available online.

LEVITON JACKS				
eXtreme Cat 6 Component-Rated QuickPort Jack				61110-R*6
LEVITON PATCH PANELS				
	1RU 24-PORT	1RU 48-PORT	2RU 48-PORT	2RU 72-PORT
Cat 6 Flat 110-Style Patch Panel	69586-U24		69586-U48	
Cat 6 Angled 110-Style Patch Panel	69587-U24		69587-U48	
Flat QuickPort Patch Panel+	49255-H24	49255-Q48	49255-H48	49255-D72
Angled QuickPort Patch Panel+	49256-H24	49256-D48	49256-H48	49256-D72
LEVITON 110-STYLE WALL-MOUNT WIRING BLOCK KIT				
Cat 6 110-Style Wiring Block Kit, includes 96-pair block with legs, labels, and 24 C-4 clips*				96-PAIR
				41AB6-1F4
LEVITON PATCH CORDS				
Atlas-X1 Cat 6 SlimLine Boot UTP Patch Cord, U.S. made				6D560-xx*
BERK-TEK CABLE				
	PLENUM 1500' SMARTPAK	PLENUM 1000' TEKPAK	RISER 1500' SMARTPAK	RISER 1000' TEKPAK
LANmark-6 Cable, blue	11074702	10136226	11074703	10136339
LANmark-6 Cable, white	11074742	10136230	11074744	10136340
LANmark-6 Cable, gray	11074743	10132983	11074745	10136338

* = Color: White (W), Lt. Almond (T), Ivory (I), Yellow (Y), Orange (O), Crimson (C), Dark Red (R), Purple (P), Blue (L), Green (V), Gray (G), Black (E), Brown (B)
 + = Sold empty, load with 61110 jacks
 xx = Length: 3 (03), 5 (05), 7 (07), 10 (10), 15 (15), 20 (20) feet
 ^ = For consolidation point. Legs are non-removable and not sold separately
 ° = Color: White (W), Yellow (Y), Blue (L), Black (E), Red (R), Green (G), Gray (S)