

2016 Title 24, Part 6 Submetering Requirements

As lighting makes up nearly 30 percent of our commercial electricity use, new codes are being introduced on the local municipal, state and national levels to conserve energy and ensure a more efficient future. 2016 Title 24, Part 6 introduces the concept of measurement and verification (M&V) to track and analyze the effectiveness of code compliance efforts.

VerifEye Solutions

With all the variables surrounding code compliance (location, project size, end user needs), selecting a submetering system that will meet all requirements for its designed use can be overwhelming. Fortunately, you can rely on Leviton for quality, reliable, simplified solutions that can be used to meet 2016 Title 24, Part 6 metering requirements for any sized project—from single office suites and classrooms up to high-rise mixed use buildings and school campuses. As we prepare for the future of energy usage and lighting system design, trust the company that has been innovating the way forward for over a century.

2016 Title 24, Part 6 Submetering Requirements

Section 130.5(a) of California 2016 Title 24, Part 6, Service Metering, requirements include user accessible metering of total electrical use from whole building to branch circuit monitoring.

Monitor, Control and Manage Energy Usage

- Identify how energy is used in order to implement the most effective 2016 Title 24, Part 6 energy saving programs
- Receive accurate details of energy use and demand from a specific circuit or a specific area to a complete building or complex
- Discover energy saving opportunities with energy cost center analysis, budgetary accountability and precise cost allocation
- Long-term cost savings of 15 to 20% by delivering revenue-grade accurate energy tracking
- Meets separation of load requirements with the ability to measure various loads
- Integrate with Building Management Systems for energy efficiency and savings

The Highest Level of Submetering Support in the Industry

VerifEye Design Assistance and Support

Not only does Leviton provide submetering solutions from a single source, we offer our customers an unparalleled level of resources to make the project planning process, installation and usage easier

Exclusive code compliance resources for 2016 Title 24, Part 6 including mobile apps, design guides, application cookbooks, and much more at title24.leviton.com

ez-Learn™ is online training from the comfort of your home or office, available 24/7 at leviton.com/ezlearn

Dedicated VerifEye support at 800-959-6004 or meters@leviton.com



Title 24 Section 130.5(a) & (b)

Minimum Requirements for Metering of Electrical Load

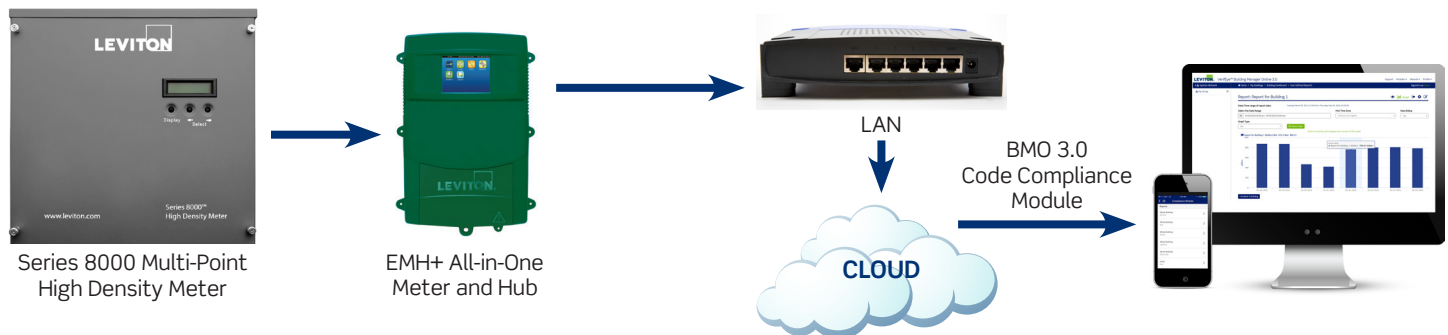
- Section 130.5(a) states that “each electrical service shall have permanently installed user-accessible metering of total energy use” per the table below
- Section 135.5(b) states that “electrical power distribution systems shall be designed to permit the disaggregated measurement of electrical load energy uses downstream from the service meter.”

Meter Type	Services Rated 50 kVA or Less	Services Rated More than 500kVA and Less than or Equal to 250 kVA	Services Rated More than 250 kVA and Less than or Equal to 1,000kVA	Services Rated More than 1,000kVA
Instantaneous (at the time) kW demand	Required	Required	Required	Required
Historical peak demand (kW)	Not required	Not required	Required	Required
Resettable kWh	Required	Required	Required	Required
kWh per rate period	Not required	Not required	Not required	Required

Featured VerifEye Disaggregation Title 24 Submetering Solution

Series 8000 Multi-Point High Density Meter

- Comprehensive line of submeters, communication products, and software solutions
- Simple installation in new or existing facilities
- Measurement & Verification (M&V) capabilities with data collection and storage
- Ideal for real-time energy monitoring and tenant billing
- Integrate with Building Management Systems for energy efficiency and savings
- Meets separation of load requirements with the ability to measure various loads



List of Equipment		
	Series 8000 Phase Config Multi-Point High Density Meter S8xxx-xxx*	1
	EMH+ All-in-One Meter and Hub A8814-xxx*	1
	BMO 3.0 Software Code Compliance Expansion Module BMOSW-COD	1

*Series 8000 Multi-Point High Density Meter and EMH+ All-in-One Meter and Hub are available in multiple configurations. See data sheets for more information.

Leviton Manufacturing Co., Inc. Energy Management, Controls and Automation

20497 SW Teton Avenue, Tualatin, OR 97062 tel 800-736-6682 fax 503-404-5594

tech line (6:00AM-4:00PM PST Monday-Friday) 800-824-3005

Leviton Manufacturing Co., Inc. Global Headquarters

201 North Service Road, Melville, NY 11747-3138 tel 800-323-8920 fax 800-832-9538

tech line (8:30AM-7:00PM ET Monday-Friday) 800-824-3005

Visit our website at: www.leviton.com/meters

©2018 Leviton Manufacturing Co. Inc. All rights reserved. Subject to change without notice.