

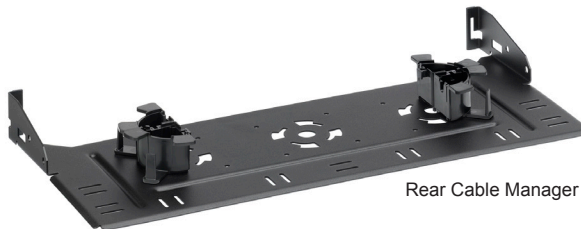
e2XHD High-Density Universal Angled Panels & Accessories

APPLICATION

The e2XHD Patching System is an easy-to-connect, high-density solution that provides simple termination and improved cable routing for shielded, unshielded, and fibre applications. Cassettes quickly snap-in and pull out of the high-density, angled panel, making installation easier than ever. Panel covers and blank cassette inserts offer extra protection from dust and damage. Copper cassettes are available either on pre-terminated trunks or with field-terminated connectors. Fibre cassettes are pre-terminated.



e2XHD Angled Panel - 1RU



Rear Cable Manager



Angled Panel Cover



Cassette Blank



e2XHD Label Kit

SPECIFICATION

Panels shall be constructed of 20-gauge steel with a black powder-coated finish. Port identification shall be included. Panels shall accept shielded, unshielded, and fibre e2XHD cassettes, and hold up to 48 duplex fibre channels or 48 copper ports in a 1RU space. Copper and fibre cassettes shall snap into the rear of the panel and shall require no tools to remove.

FEATURES

- Panels allow a mix-and-match of shielded, unshielded, and fibre e2XHD cassettes
- Alignment tabs ensure upright insertion of cassettes
- To remove cassettes from the panel, simply pull out the handle using the release latch
- Rear Cable Manager supports copper or fiber cables, and snaps directly to panel without tools
- Cassette Blanks available for unused cassette openings
- Panel Cover minimizes dust or debris

DESIGN CONSIDERATIONS

- Cable manager and cover sold separately from panel
- Panels mount on standard 19-inch cabinet
- Cable clamp mounting kits are available to provide strain relief for incoming fibre trunk cables.
- When routing copper cable, one Rear Cable Manager is recommended for every 2RU of panel for better rear access
- Angled Panel Cover can mount to top or bottom of panels
- Flat e2XHD panels also available
- Panels include M5 cage nuts and screws, as well as appropriate parts for bonding panel to cabinet

PHYSICAL SPECIFICATIONS

Material: 20-gauge steel, powder-coated black
 Capacity: 1RU: 48 duplex fibre channels or 48 copper ports
 1RU: Accepts up to 8 copper and/or fibre cassettes (12-fibre LC-MTP®, 24-fibre MTP-MTP), or 4 24-fibre LC-MTP cassettes

WARRANTY INFORMATION

For a copy of Leviton product warranties, visit www.leviton.com/warranty.

COUNTRY OF ORIGIN

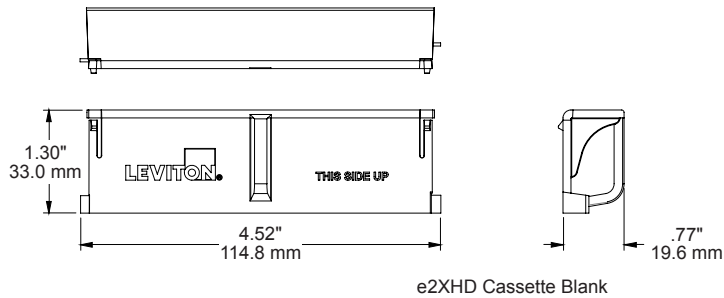
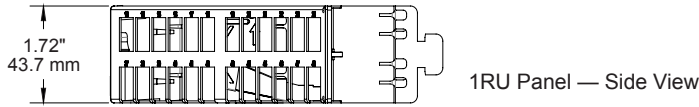
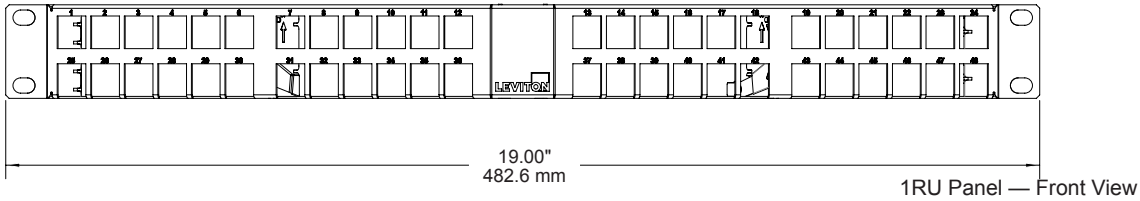
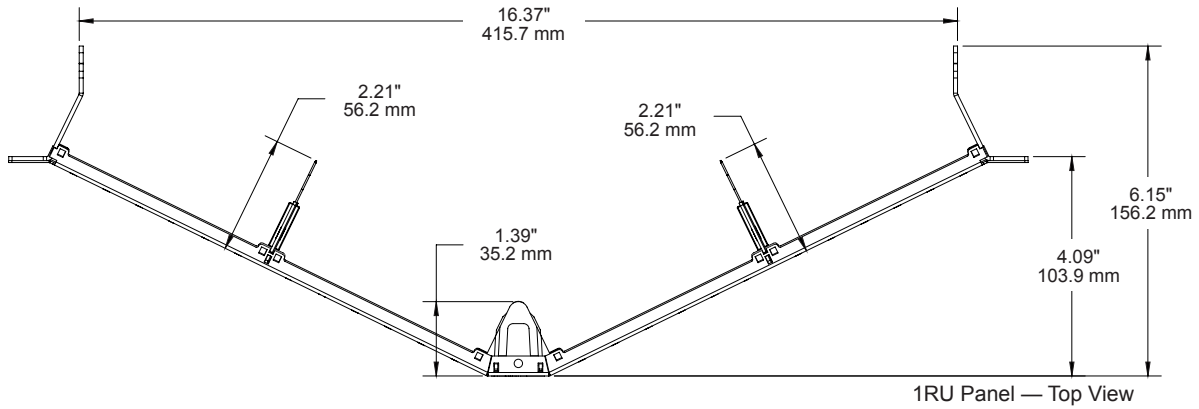
USA: E2XHD-BLK, E2XHD-LBL
 Mexico: E2X1A-CMB, E2XHD-COV
 Taiwan: E2X1A-E48

Page 1 of 3

Leviton Network Solutions 2222 - 222nd St. SE Bothell, WA 98021-4416	Asia / Pacific T +1.631.812.6228 E infoasean@leviton.com	Canada T +1.514.954.1840 E pcservice@leviton.com	Caribbean T +1.954.593.1896 E infocaribbean@leviton.com	China T +852.2774.9876 E infochina@leviton.com	Colombia T +57.1.743.6045 E infocolombia@leviton.com
tel 1-800-824-3005 tel +1-425-486-2222 appeng@leviton.com www.leviton.com	Europe T +44.0.1592.772124 E customerservice@brand-rex.com	India / SAARC T +971.4.886.4722 E infoindia@leviton.com	Mexico T +52.55.5082.1040 E Isamarketing@leviton.com	Middle East & Africa T +971.4.886.4722 E lmeinfo@leviton.com	South Korea T +82.2.3273.9963 E infokorea@leviton.com

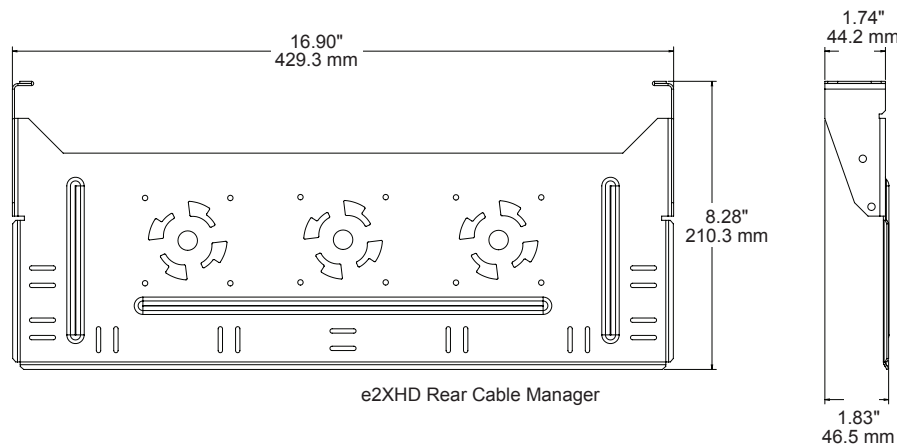
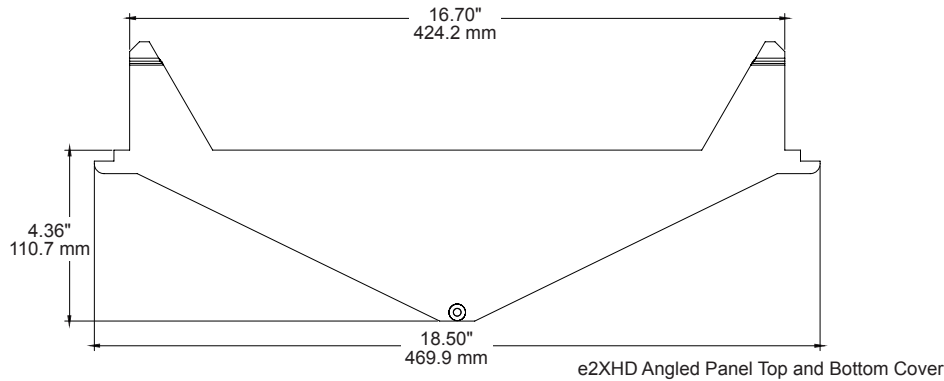
ELECTRONIC FILES

For CAD files, typical specs, or technical drawings (.DXF, .DWG), visit www.leviton.com.



E2X1A-E48, E2XHD-BLK, E2XHD-CMB, E2XHD-COV, E2XHD-LBL

Leviton Network Solutions 2222 - 222nd St. SE Bothell, WA 98021-4416 tel 1-800-824-3005 tel +1-425-486-2222 appeng@leviton.com www.leviton.com	Asia / Pacific T +1.631.812.6228 E infoasean@leviton.com	Canada T +1.514.954.1840 E pcservice@leviton.com	Caribbean T +1.954.593.1896 E infocaribbean@leviton.com	China T +852.2774.9876 E infochina@leviton.com	Colombia T +57.1.743.6045 E infocolombia@leviton.com
	Europe T +44.0.1592.772124 E customerservice@brand-rex.com	India / SAARC T +971.4.886.4722 E infoindia@leviton.com	Mexico T +52.55.5082.1040 E lsamarketing@leviton.com	Middle East & Africa T +971.4.886.4722 E lmeinfo@leviton.com	South Korea T +82.2.3273.9963 E infokorea@leviton.com



e2XHD PATCHING SYSTEM

Description	Part No.
e2XHD 1RU High-Density Universal Angled Panel, accepts shielded, unshielded, and fibre cassettes	E2X1A-E48
e2XHD Rear Cable Manager for Angled Panel, includes four 1/4" round cable management rings	E2XHD-CMB
e2XHD Cassette Blank	E2XHD-BLK
e2XHD Angled Panel Cover	E2XHD-COV
e2XHD Label Kit	E2XHD-LBL

e2XHD RELATED PRODUCTS

Description	Part No.
Universal 0RU Patch Cord Cable Manager (bag of 2)	5RCMT-VFG
Universal Opt-X® Clamp Kit, single cable grommet (mounts to Rear Cable Manager)	5RCMP-KIT
Universal Opt-X Clamp Kit, multiple cable grommet (mounts to Rear Cable Manager)	5RCMP-KT2
Universal Clamp Kit, single and multiple cable grommet (for rack mounting)	5RCMR-KIT



Leviton Network Solutions	Asia / Pacific	Canada	Caribbean	China	Colombia
2222 - 222nd St. SE Bothell, WA 98021-4416	T +1.631.812.6228 E infoasean@leviton.com	T +1.514.954.1840 E pcservice@leviton.com	T +1.954.593.1896 E infocaribbean@leviton.com	T +852.2774.9876 E infochina@leviton.com	T +57.1.743.6045 E infocolombia@leviton.com
tel 1-800-824-3005 tel +1-425-486-2222 appeng@leviton.com www.leviton.com	Europe T +44.0.1592.772124 E customerservice@brand-rex.com	India / SAARC T +971.4.886.4722 E infoindia@leviton.com	Mexico T +52.55.5082.1040 E Isamarketing@leviton.com	Middle East & Africa T +971.4.886.4722 E lmeinfo@leviton.com	South Korea T +82.2.3273.9963 E infokorea@leviton.com