

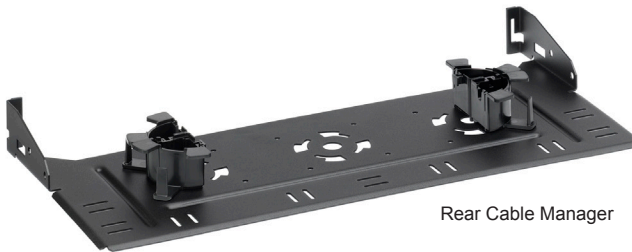
## e2XHD High-Density Universal Angled Panels & Accessories

### APPLICATION

The e2XHD Patching System is an easy-to-connect, high-density solution that provides simple termination and improved cable routing for shielded, UTP, and fiber applications. Cassettes quickly snap-in and pull out of the high-density, angled panel, making installation easier than ever. Panel covers and blank cassette inserts offer extra protection from dust and damage. Copper cassettes are available either on pre-terminated trunks or with field-terminated connectors. Fiber cassettes are pre-terminated.



e2XHD Angled Panel - 1RU



Rear Cable Manager



Angled Panel Cover



Cassette Blank

### SPECIFICATION

Panels shall be constructed of 20-gauge steel with a black powder-coated finish. Port identification shall be included. Panels shall accept shielded, UTP, and fiber e2XHD cassettes, and hold up to 48 duplex fiber channels or 48 copper ports in a 1RU space. Copper and fiber cassettes shall snap into the rear of the panel and shall require no tools to remove. Panel shall meet all ANSI/TIA-568.0-D requirements and all applicable standards.

### FEATURES

- Panels allow a mix-and-match of shielded, UTP, and fiber e2XHD cassettes
- Alignment tabs ensure upright insertion of cassettes
- To remove cassettes from the panel, simply pull out the handle using the release latch
- Rear Cable Manager supports copper or fiber cables, and snaps directly to panel without tools
- Cassette Blanks available for unused cassette openings
- Panel Cover minimizes dust or debris

### DESIGN CONSIDERATIONS

- Cable manager and cover sold separately from panel
- Panels mount on standard 19-inch relay rack or cabinet
- Cable clamp mounting kits are available to provide strain relief for incoming fiber trunk cables.
- When routing copper cable, one Rear Cable Manager is recommended for every 2RU of panel for better rear access
- Angled Panel Cover can mount to top or bottom of panels
- Panels include #12-24 fasteners and appropriate parts to bond panel to rack/cabinet

### PHYSICAL SPECIFICATIONS

Material: 20-gauge steel, powder-coated black

Capacity: 1RU: 48 duplex fiber channels or 48 copper ports

1RU: Accepts up to 8 copper and/or fiber cassettes (12-fiber LC-MTP®, 24-fiber MTP-MTP), or 4 24-fiber LC-MTP cassettes

### STANDARDS COMPLIANCE

- Patch panel compliant with ANSI/TIA-568.0-D

### WARRANTY INFORMATION

For a copy of Leviton product warranties, visit [www.leviton.com/warranty](http://www.leviton.com/warranty).

### COUNTRY OF ORIGIN

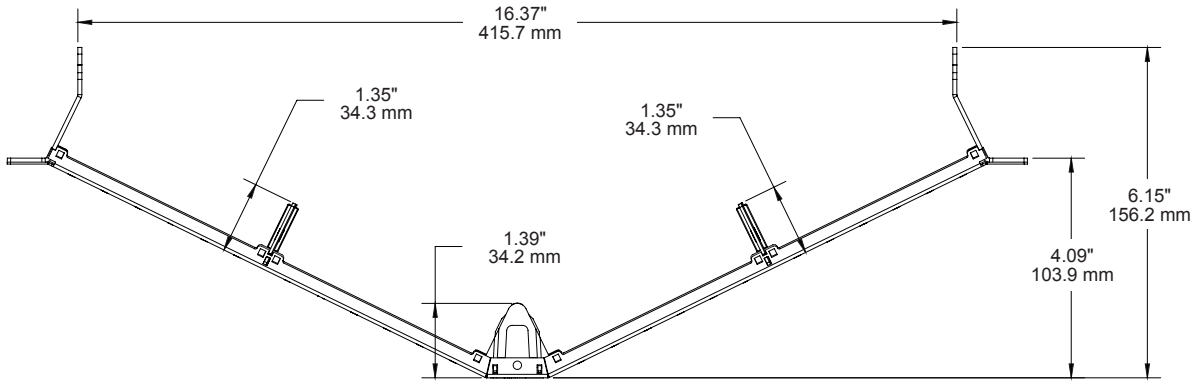
USA: E2XHD-BLK  
 Mexico: E2X1A-CMB, E2XHD-COV  
 Taiwan: E2X1A-S48

Page 1 of 3

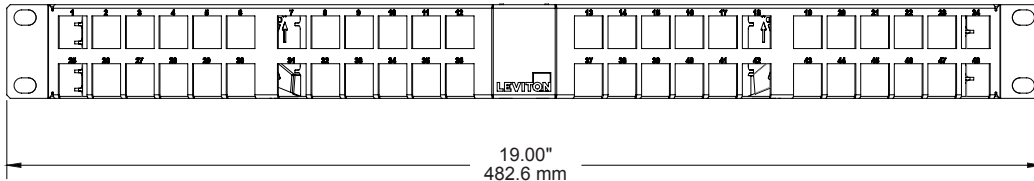
<b>Leviton Network Solutions</b> 2222 - 222nd St. SE Bothell, WA 98021-4416	<b>Asia / Pacific</b> T +1.631.812.6228 E infoasean@leviton.com	<b>Canada</b> T +1.514.954.1840 E pcservice@leviton.com	<b>Caribbean</b> T +1.954.593.1896 E infocaribbean@leviton.com	<b>China</b> T +852.2774.9876 E infochina@leviton.com	<b>Colombia</b> T +57.1.743.6045 E infocolombia@leviton.com
tel 1-800-824-3005 tel +1-425-486-2222 appeng@leviton.com www.leviton.com	<b>Europe</b> T +44.0.1592.772124 E customerserviceeu@leviton.com	<b>India / SAARC</b> T +971.4.886.4722 E infoindia@leviton.com	<b>Mexico</b> T +52.55.5082.1040 E Isamarketing@leviton.com	<b>Middle East &amp; Africa</b> T +971.4.247.9800 E lmeinfo@leviton.com	<b>South Korea</b> T +82.2.3273.9963 E infokorea@leviton.com

**ELECTRONIC FILES**

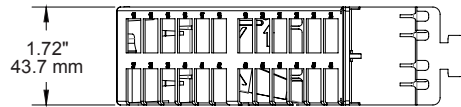
For CAD files, typical specs, or technical drawings (.DXF, .DWG), visit [www.leviton.com](http://www.leviton.com).



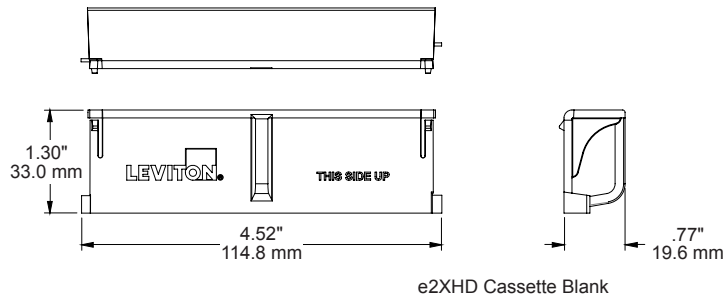
e2XHD High-Density Angled Panel – Top View



1RU Panel — Front View



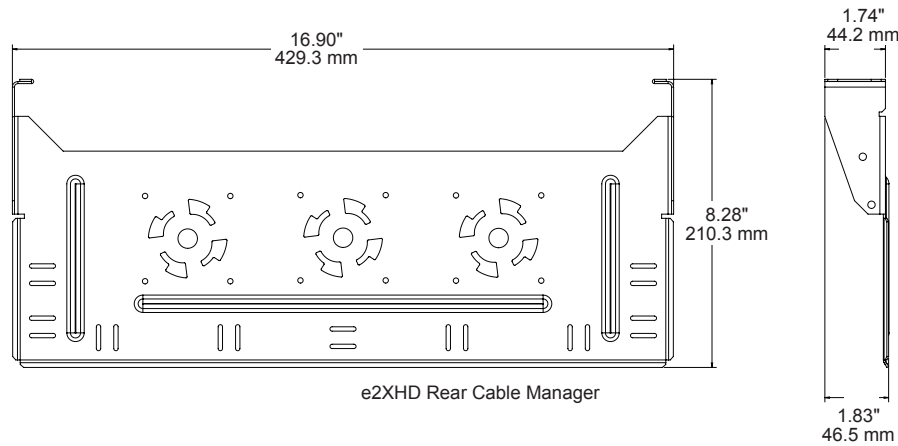
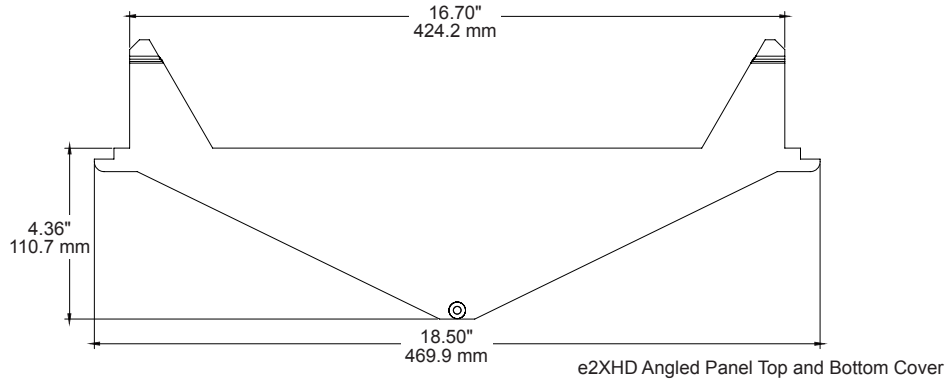
1RU Panel — Side View



e2XHD Cassette Blank

**E2X1A-S48, E2XHD-BLK, E2XHD-CMB, E2XHD-COV**

<b>Leviton Network Solutions</b> 2222 - 222nd St. SE Bothell, WA 98021-4416  tel 1-800-824-3005 tel +1-425-486-2222 appeng@leviton.com www.leviton.com	<b>Asia / Pacific</b> T +1.631.812.6228 E infoasean@leviton.com	<b>Canada</b> T +1.514.954.1840 E pcservice@leviton.com	<b>Caribbean</b> T +1.954.593.1896 E infocaribbean@leviton.com	<b>China</b> T +852.2774.9876 E infochina@leviton.com	<b>Colombia</b> T +57.1.743.6045 E infocolombia@leviton.com
	<b>Europe</b> T +44.0.1592.772124 E customerserviceeu@leviton.com	<b>India / SAARC</b> T +971.4.886.4722 E infoindia@leviton.com	<b>Mexico</b> T +52.55.5082.1040 E lsamarketing@leviton.com	<b>Middle East &amp; Africa</b> T +971.4.247.9800 E lmeinfo@leviton.com	<b>South Korea</b> T +82.2.3273.9963 E infokorea@leviton.com



**e2XHD PATCHING SYSTEM**

Description	Part No.
e2XHD 1RU High-Density Universal Angled Panel, accepts shielded, UTP, and fiber cassettes	E2X1A-S48
e2XHD Rear Cable Manager, includes four quarter-round cable management rings	E2XHD-CMB
e2XHD Cassette Blank	E2XHD-BLK
e2XHD Angled Panel Cover	E2XHD-COV

**e2XHD RELATED PRODUCTS**

Description	Part No.
Universal 0RU Patch Cord Cable Manager (bag of 2)	5RCMT-VFG
Universal Opt-X® Clamp Kit, single cable grommet (mounts to Rear Cable Manager)	5RCMP-KIT
Universal Opt-X Clamp Kit, multiple cable grommet (mounts to Rear Cable Manager)	5RCMP-KT2
Universal Clamp Kit, single and multiple cable grommet (for rack mounting)	5RCMR-KIT

<b>Leviton Network Solutions</b> 2222 - 222nd St. SE Bothell, WA 98021-4416  tel 1-800-824-3005 tel +1-425-486-2222 appeng@leviton.com www.leviton.com	<b>Asia / Pacific</b> T +1.631.812.6228 E infosean@leviton.com	<b>Canada</b> T +1.514.954.1840 E pcservice@leviton.com	<b>Caribbean</b> T +1.954.593.1896 E infocaribbean@leviton.com	<b>China</b> T +852.2774.9876 E infochina@leviton.com	<b>Colombia</b> T +57.1.743.6045 E infocolombia@leviton.com
	<b>Europe</b> T +44.0.1592.772124 E customerservice@brand-rex.com	<b>India / SAARC</b> T +971.4.886.4722 E infoindia@leviton.com	<b>Mexico</b> T +52.55.5082.1040 E Isamarketing@leviton.com	<b>Middle East &amp; Africa</b> T +971.4.886.4722 E lmeinfo@leviton.com	<b>South Korea</b> T +82.2.3273.9963 E infokorea@leviton.com