

SYSTEM DATA SHEET — INTERNATIONAL

ATLAS-X1™ CAT 6A UTP SYSTEM

Our best Cat 6A system features the Atlas-X1 jack and offers superior performance for mission-critical applications

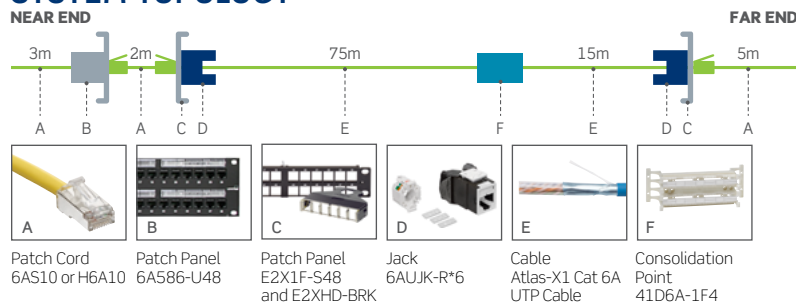
- Innovative crosstalk prevention technology in the Leviton Noise-Canceling Helix Technology cable assures excellent alien crosstalk (AXT) suppression
- Exceeds ANSI/TIA-568.2-D Cat 6A and ISO/IEC 11801-1 Class E_A requirements for channel, link, and component requirements to support IEEE 10GBASE-T (802.3an) networks
- Channel performance third-party verified by Intertek Testing Services (ETL)
- Error-free performance up to 10 Gigabit Ethernet with full duplex transmission up to 500MHz
- Backwards compatible with Gigabit Ethernet to provide seamless migration to 10GBASE-T and supports all Cat 6 and Cat 5e system requirements

TYPICAL * SYSTEM PERFORMANCE

ATLAS-X1 CAT 6A UTP SYSTEM CHANNEL MARGINS										
	Insertion Loss	NEXT	PSNEXT	ACR-F (ELFEXT)	PSACR-F (PSELFEXT)	Return Loss	ACR-N	PSACR-N	PSANEXT	PSAACR-F
Standard (500MHz)	3%	5.0 dB	6.0 dB	10.0 dB	10.0 dB	4.0 dB	7.0 dB	7.0 dB	5.0 dB	11.0 dB
Typical Performance Margin	3%	5.0 dB	6.0 dB	8.0 dB	10.0 dB	3.0 dB	7.0 dB	7.0 dB	2.0 dB	1.0 dB

*All parameters comply with ANSI/TIA-568.2-D Cat 6A and ISO/IEC 11801-1 Class E_A requirements across the entire frequency range. All values represent typical margins for 19- to 100-meter channel configurations. System performance is representative of the specific components and topologies as listed on this system data sheet. Typical margins listed reflect channels of 21-93 meters when using 2B AWG patch cords (H6A10). Typical performance values are based on verified test results, either third-party, in-house and/or field test data. Field-installed channel margins may vary based on the accuracy of the handheld tester, system design and installation practices. Only Leviton approved testers may be used. All stated performance specifications are subject to the terms and conditions of the manufacturers warranties. Details at www.leviton.com.

SYSTEM TOPOLOGY



RECOMMENDED FOR

10GBASE-T network applications and mission-critical systems

Short links in data centers

High-density cabling and constrained pathway environments

Optimal total cost of ownership for financial, health care, government, transportation, and education environments

Exceeds PoE standards up to 100 watts

Wireless applications supporting IEEE 802.11ac and higher

IP-based security and building automation systems utilizing UTP cabling

Optimal support for Energy Efficient Ethernet in the data center

Cat 6A Atlas-X1





JACKS

ATLAS-X1™ CAT 6A COMPONENT-RATED QUICKPORT™ JACKS

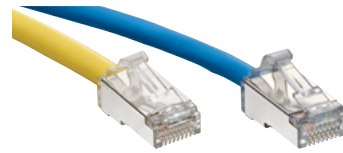
- Tested and approved for use in air-handling spaces (plenum rating) in accordance with UL Standard 2043
- Independently tested and guaranteed to exceed all component, permanent link, and channel margins
- Patented Retention Force Technology™ protects against time damage and maintains contact force between plug and Jack, preventing arcing from intermittent disconnects in PoE applications
- PoE optimized tine geometry prevents arcing damage where plug and Jack make contact, extending the life of the Jack and ensuring maximum performance (see specification sheets for full PoE capabilities)
- Solid metal body dissipates 53% more heat than plastic, minimizing damage from excess heat in PoE applications
- Available with internal shutter to protect from dust and debris
- Unique, tool-free design requires no specialized termination or re-termination tool
- Short Jack design supports a wider range of applications (e.g. shallow boxes, enclosures, bend radius, etc.)
- Interchangeable icons in 13 colors (VOICE, DATA, AV, and blank) make it easy to identify and track data, voice, or other functions (select jacks include color matching icons)
- Proudly manufactured in the U.S.



PATCH PANELS

CAT 6A E2XHD, 110-STYLE, AND QUICKPORT PATCH PANELS

- Available in cassette-style, 110-Style, and QuickPort flat, angled, and zero-u configurations in 12-, 24-, and 48-port counts
- Patented triple-stage compensation design with integrated flexible circuit enhances link and channel performance
- Gas-tight insulation displacement contacts provide excellent conductor retention and resistance to surface-contact oxidation for life of the system
- QuickPort patch panels available for high-density applications — 1RU, 48-port



PATCH CORDS

CAT 6A PATCH CORDS

- Tested and verified for TIA Cat 6A component and channel requirements
- Short boot to reduce installed bend radius requirements
- Excellent alien crosstalk (AXT) suppression
- 26-gauge stranded for maximum flexibility in any density patching environment
- Available from stock in lengths of 3' (0.9 m), 5' (1.5 m), 7' (2.1 m), 10' (3.1 m), 15' (4.6 m), 20' (6.1 m) and in 7 colors
- Country of Origin: U.S.

CAT 6A HIGH-FLEX PATCH CORDS

- Tested and verified for TIA Cat 6A component and channel requirements
- Nominal OD of 4.7 mm to maximize cable pathway capacity
- Enhanced flexibility and short boot to minimize bend radius requirements
- 28 AWG patch cords have limitations in terms of supported channel lengths and PoE levels. Please see [product spec sheet](#) for details of these limitations.



CABLES

CAT 6A UTP CABLES

- Patented Leviton design provides superior alien crosstalk suppression
- Small cable OD increases pathway capacity and improves airflow to critical active equipment
- UTP cable eliminates the need for grounding and bonding
- Smaller, lighter, and more flexible, saving time during installation and reducing labor costs
- Third-party verified to support short channels (9.14 meters)
- Independently tested and verified to meet ANSI/TIA Cat 6A and ISO 11801-1 Class E_A performance
- Available in IEC 60332-1 (LSZH), Riser, and Plenum flame ratings
- Supports Power over Ethernet (PoE) —see individual product specifications sheets for full capabilities

PART NUMBERS - Common part numbers shown. Many additional colors, lengths, and other options available online.

LEVITON JACKS			STANDARD	WITH SHUTTER	ADDITIONAL ICONS		
Atlas-X1 Cat 6A Component-Rated QuickPort Jack			6AUJK-R*6	6AUJK-S*6	ICONS-IC*		
LEVITON E2XHD CASSETTES					E2XHD-BRK		
e2XHD Empty Cassette+							
LEVITON PATCH PANELS			1RU, 24-PORT	1RU, 48-PORT	2RU, 48-PORT		
Cat 6A Flat 110-Style Patch Panel			6A586-U24		6A586-U48		
Cat 6A Angled 110-Style Patch Panel			6A587-U24		6A587-U48		
e2XHD High-Density Flat Patch Panel*				E2X1F-S48			
e2XHD High-Density Angled Patch Panel*				E2X1A-S48			
Flat QuickPort Patch Panel+			49255-H24	49255-Q48	49255-H48		
Angled QuickPort Patch Panel+			49256-H24	49256-D48	49256-H48		
LEVITON 110-STYLE WALL-MOUNT WIRING BLOCK KIT					64-PAIR		
Cat 6A 110-Style Wiring Block Kit, includes 64-port block with legs, labels, and 16 C-4 clips*					41D6A-1F4		
LEVITON PATCH CORDS	WHITE	YELLOW	RED	BLUE	GREEN	GRAY	BLACK
Cat 6A Standard Patch Cords	6AS10-xxW	6AS10-xxY	6AS10-xxR	6AS10-xxL	6AS10-xxG	6AS10-xxS	6AS10-xxE
Cat 6A High-Flex 28 AWG Patch Cord	H6A10-xxW	H6A10-xxY	H6A10-xxR	H6A10-xxL	H6A10-xxG	H6A10-xxS	H6A10-xxE
LEVITON CABLES					LATIN AMERICA		ASIA PACIFIC
Cat 6A, LSHF/LSZH, blue~					100-DUTAZ-MLS		100-DUTAZ-MLS
Cat 6A, Riser Rated, blue~					100-DUTAR-MLS		
Cat 6A, Plenum Rated, blue~					110-IUTAP-MLS		

* = Jack Color: White (W), Lt. Almond (T), Ivory (I), Yellow (Y), Orange (O), Crimson (C), Dark Red (R), Purple (P), Blue (L), Green (V), Gray (G), Black (E), Brown (B)
 + = Sold empty, load with 6AUJK jacks ~ = Sold empty, load with E2XHD-BRK cassettes
 xx = Length: 3 (03), 5 (05), 7 (07), 10 (10), 15 (15), 20 (20) feet
 + = For consolidation point, legs are non-removable and not sold separately
 ~ = Sold in 305-meter spools, additional colors available, visit leviton.com/cable