

# ASHRAE 90.1- 2013/2016/2019 Submetering Requirements

Energy  
Monitoring and  
Management  
with VerifEye™  
Series 7000  
and 7100  
Meters

## Accessible metering of total electrical use from whole building to branch circuit with VerifEye™ Series 7000 and 7100 Meters.

ASHRAE 90.1-2013/2016/2019 requires building owners and facility managers to identify how energy is used by tracking and analyzing the effectiveness of code compliance efforts. The VerifEye Series 7000 and 7100 Meters and Building Manager Online (BMO) offer a cost effective solution for meeting energy code requirements for electrical load management.



### CHALLENGE

*State energy code requires building owners and facility managers to monitor electrical loads and total energy usage in a facility.*

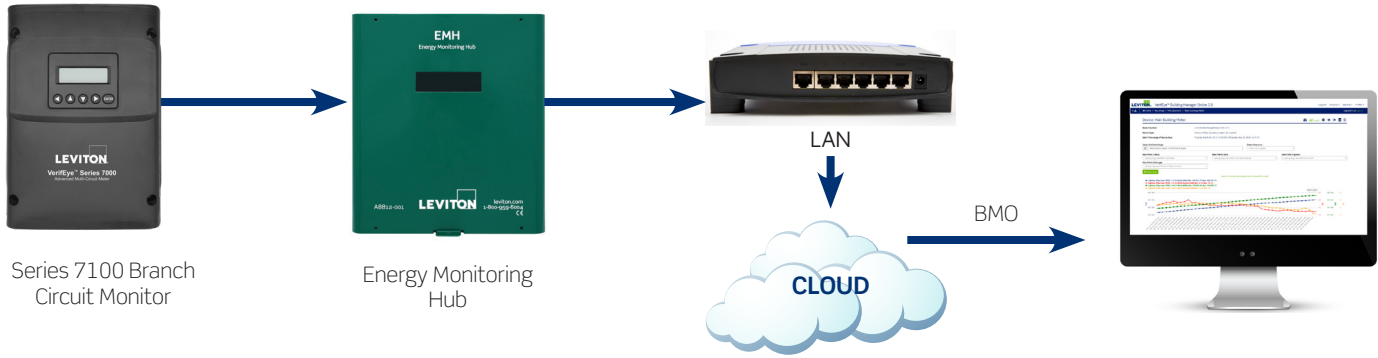
- Solution must be used to meet ASHRAE 90.1-2013/2016/2019 submetering requirements
- Energy metering for energy efficiencies is required for all new and major retrofit projects
- Code requires data management system capable of storing energy data and creating reports for hourly, daily, monthly and annual energy consumption for each major energy system

### SOLUTION




*VerifEye Series 7000 and 7100 Advanced Branch Circuit Monitor's modular design is configured for monitoring multiple electrical circuits.*

- Can be used to comply with ASHRAE 90.1-2013/2016/2019 submetering requirements
- Easy-to-install retrofit application requires minimal wiring during installation while saving time and reducing labor cost
- Building Manager Online software enables users to meet code compliance requirements for data storage, reporting, and display

## VERIFEYE SERIES 7000 AND 7100 ADVANCED BRANCH CIRCUIT MONITOR — ASHRAE 90.1-2013/2016/2019 SUBMETERING REQUIREMENTS



### WHAT YOU WILL NEED

VERIFEYE SERIES 7000 AND 7100 ADVANCED BRANCH CIRCUIT MONITOR—CODE REQUIREMENTS		QTY
	<b>VeriEye Series 7100 Branch Circuit Monitor   71D48-000   71D12-000</b> Monitors current, voltage, demand and energy consumption of each circuit in a panelboard	<b>Varies</b>
	<b>Energy Monitoring Hub (EMH)   A8812</b> Benchmarks building energy usage and view "real-time" performance data	<b>Typically 1 per site</b>
	<b>VeriEye Building Manager Online (BMO)   BMOSW-xxx</b> Allows end users to meet the growing list of code reporting requirements	<b>Varies</b>

Visit our website at: [www.leviton.com/verifeye](http://www.leviton.com/verifeye)

© 2022 Leviton Manufacturing Co. Inc. All rights reserved. Subject to change without notice.

G-10524A/H22-mm

REV AUG 2022

