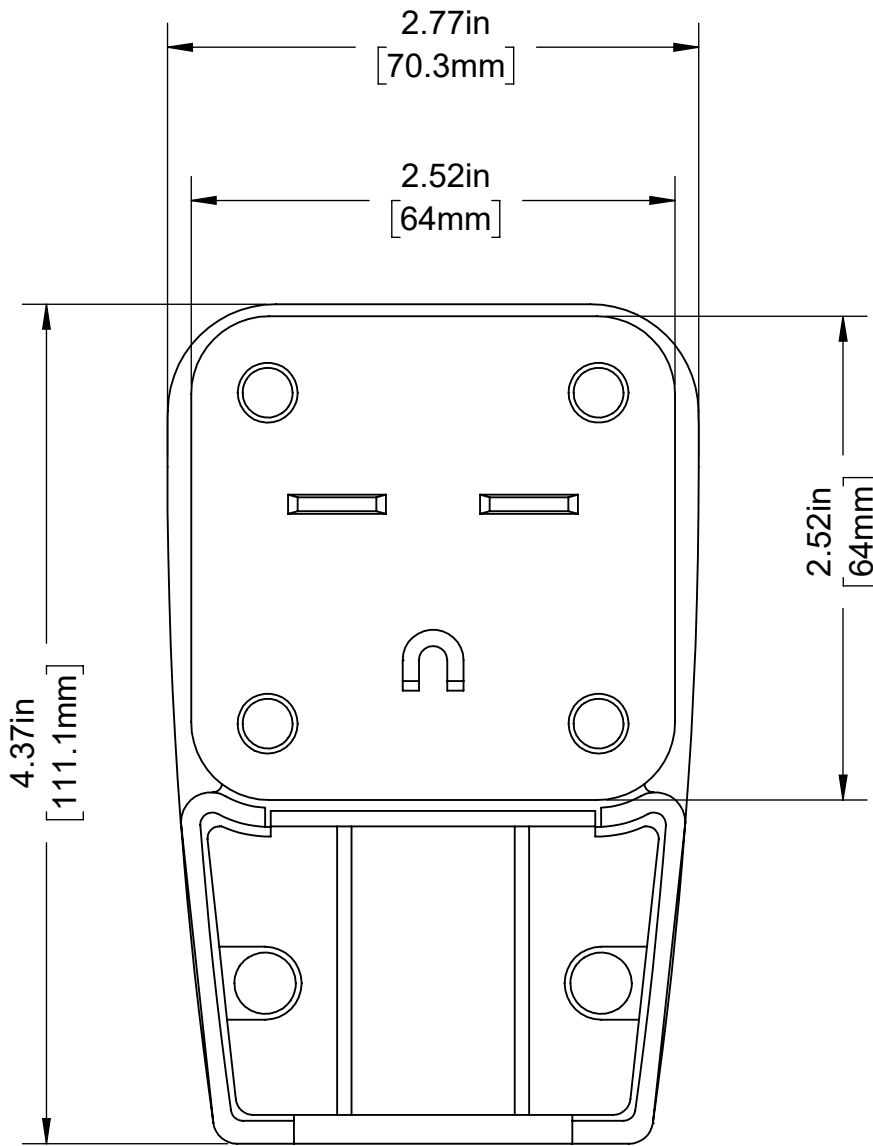
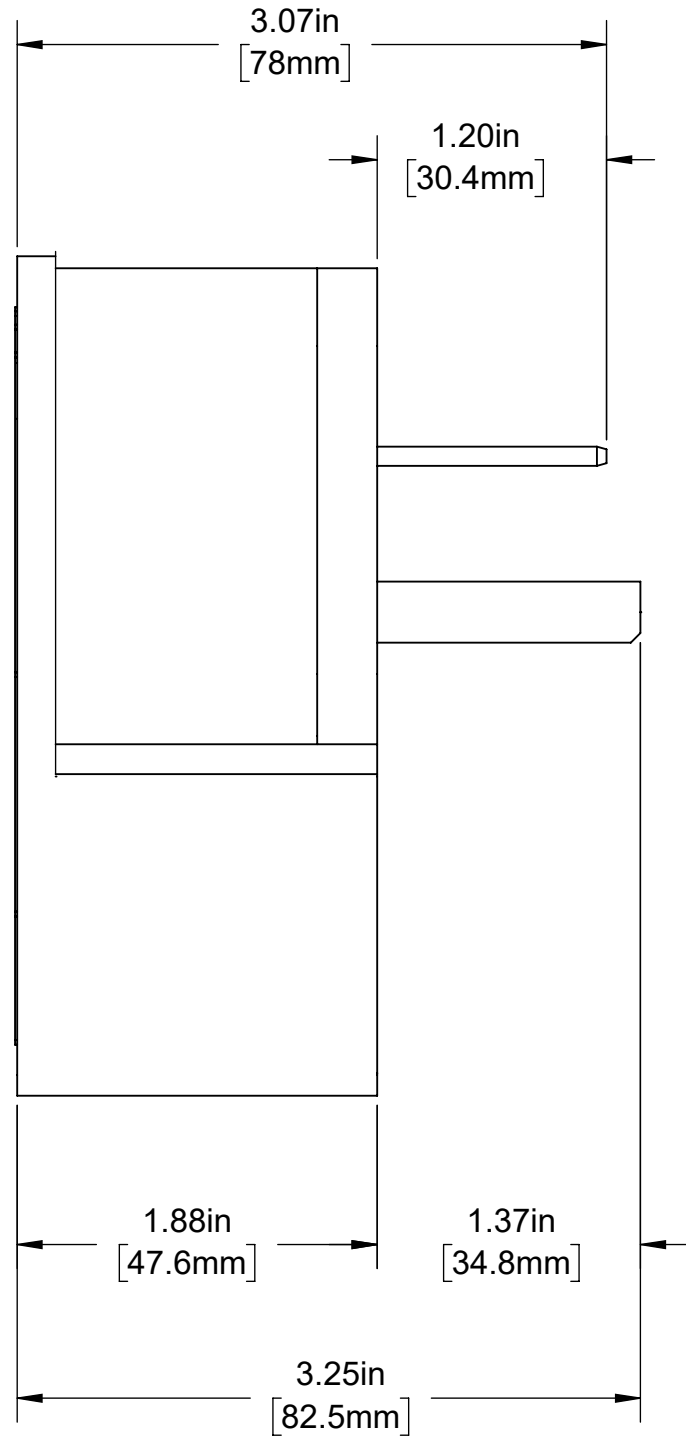


4

3

2

1



CATALOG # 9630-P

STRAIGHT BLADE ANGLE PLUG,
2-POLE, 3-WIRE, 30A-250V,
GROUNDING PLUG.
NEMA 6-30P

UNLESS OTHERWISE SPECIFIED:
DO NOT SCALE DRAWING.
ALL DIMENSIONS ARE IN INCHES.
ALL ANGLES ARE IN DEGREES.

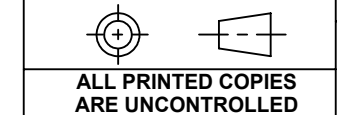
LEVITON®

TOLERANCES	
INCH	METRIC
.XX ± .01	.X ± .2 mm
.XXX ± .005	.XX ± .1 mm

TITLE:
**CAT 9630-P CATALOG FOR
NEMA 6-30P ANGLE PLUG**

ANGLES: ± 1/2°
THIRD ANGLE PROJECTION

DWG NO.
CATSTD-09630-00P-D01



SIZE B	SCALE: 1:1	SHEET 1 OF 1	REV 1
------------------	------------	--------------	-----------------

ALL PRINTED COPIES
ARE UNCONTROLLED

Copyright 2019. Unpublished. All Rights Reserved.

4

3

2

1

B

B

A

A