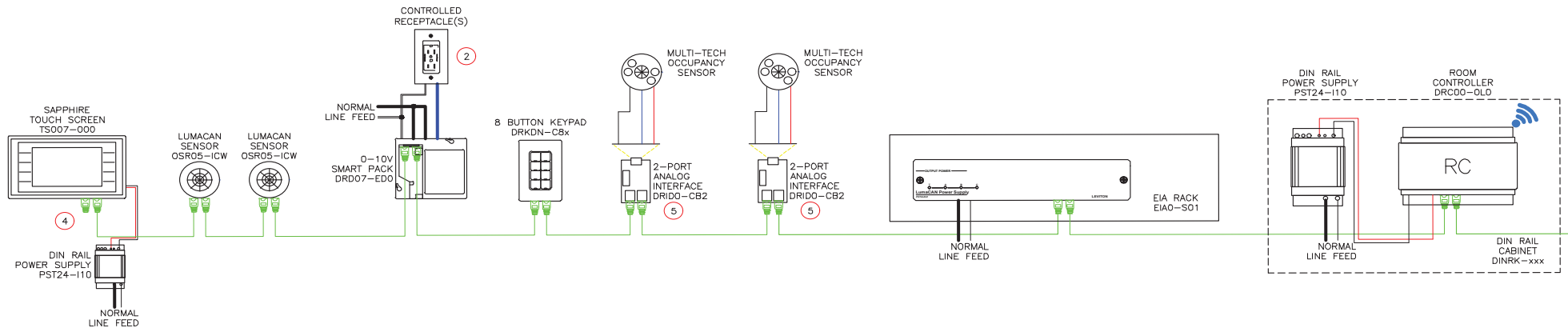


GREENMAX DRC 18-ZONE PHASE CONTROL DIMMING, TYPICAL



Based on Leviton GreenMAX DRC System - Leviton.com/greemaxdrc.

NOTES:

1. SMART PACK, SENSORS, AND PHASE CONTROL DIMMER QUANTITY PER CONTROL ZONE REQUIREMENTS.
2. RECEPTACLES TO BE WIRED AS SPLIT OR WHOLE CONTROLLED, CODE DEPENDENT. DIAGRAM SHOWS WHOLE CONTROL.
3. OSR05-ICW USED FOR DAYLIGHTING CONTROL. PROVIDE AS REQUIRED PER DAYLIGHTING ZONE.
4. TERMINATE EACH END OF A LUMACAN NETWORK.
5. DEVICES MOUNTED ATOP A 4x4 SQUARE BDX COVER.
6. REFER TO PRODUCT LITERATURE (DATA SHEETS, INSTALLATION MANUALS, ETC.) FOR MORE INFORMATION.

WIRE RUN KEY:

- LUMACAN
- 0-10V FIXTURE CONTROL, VIO
- 0-10V FIXTURE CONTROL, GRY
- LOW VOLTAGE +24VDC
- LOW VOLTAGE DCC
- LOW VOLTAGE SIG
- LINE VOLTAGE, LINE
- LINE VOLTAGE, LOAD
- LINE VOLTAGE, NEU

Note: All GreenMAX DRC Keypads can be engraved. Click [here](#) for the Engraving Form.

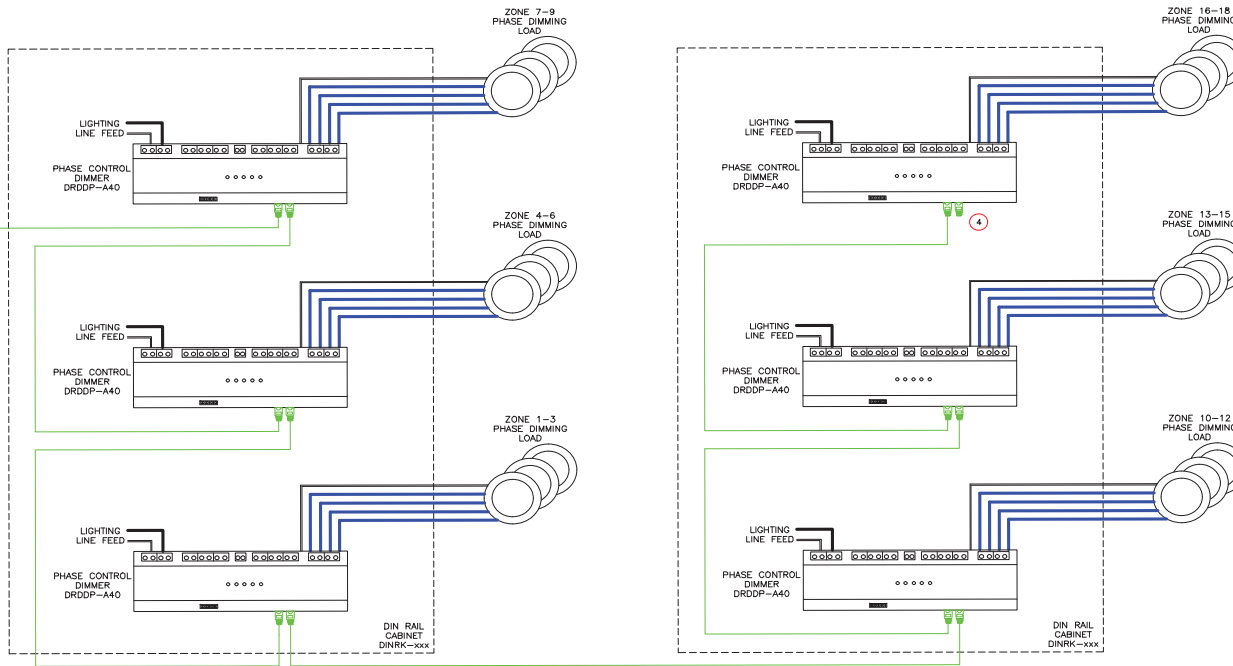
Leviton Manufacturing Co., Inc. Lighting & Controls

20497 SW Teton Avenue, Tualatin, OR 97062 tel 800-736-6682 fax 503-404-5594 tech line (6:00AM-4:00PM PT Mon-Fri) 800-959-6004

Visit our Website at: www.leviton.com/greemaxdrc

©2020 Leviton Manufacturing Co., Inc. All rights reserved. Subject to change without notice.

GREENMAX DRC 18-ZONE PHASE CONTROL DIMMING, TYPICAL (CONTINUED)



Based on Leviton GreenMAX DRC System - Leviton.com/greemaxdrc.

NOTES:

1. SMART PACK, SENSORS, AND PHASE CONTROL DIMMER QUANTITY PER CONTROL ZONE REQUIREMENTS.
2. RECEPTACLES TO BE WIRED AS SPLIT OR WHOLE CONTROLLED, CODE DEPENDENT. DIAGRAM SHOWS WHOLE CONTROL.
3. OSR05-ICW USED FOR DAYLIGHTING CONTROL. PROVIDE AS REQUIRED PER DAYLIGHTING ZONE.
4. TERMINATE EACH END OF A LUMACAN NETWORK.
5. DEVICES MOUNTED ATOP A 4x4 SQUARE BOX COVER.
6. REFER TO PRODUCT LITERATURE (DATA SHEETS, INSTALLATION MANUALS, ETC.) FOR MORE INFORMATION.

WIRE RUN KEY:

- LUMACAN
- 0-10V FIXTURE CONTROL, VID
- 0-10V FIXTURE CONTROL, GRY
- LOW VOLTAGE +24VDC
- LOW VOLTAGE DCC
- LOW VOLTAGE SIG
- LINE VOLTAGE, LINE
- LINE VOLTAGE, LOAD
- LINE VOLTAGE, NEU

Note: All GreenMAX DRC Keypads can be engraved. Click [here](#) for the Engraving Form.

Leviton Manufacturing Co., Inc. Lighting & Controls

20497 SW Teton Avenue, Tualatin, OR 97062 tel 800-736-6682 fax 503-404-5594 tech line (6:00AM-4:00PM PT Mon-Fri) 800-959-6004

Visit our Website at: www.leviton.com/greemaxdrc

©2020 Leviton Manufacturing Co., Inc. All rights reserved. Subject to change without notice.