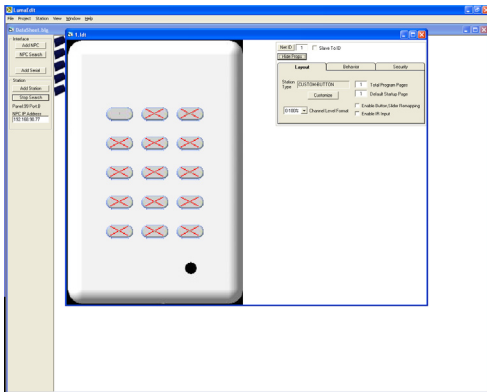


Luma-Edit Software

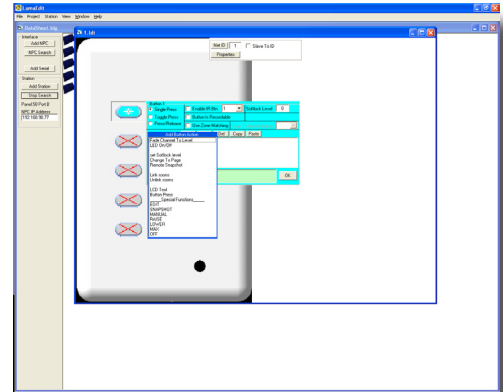
Leviton's Luma-Edit software is used to facilitate installation, programming, and configuration of Dimensions D8000 control systems.

APPLICATIONS

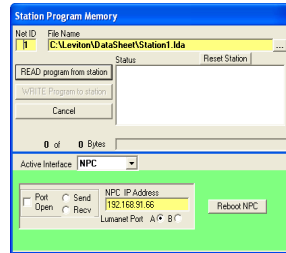
- D8000 Configuraiton
- NPC Network Identification



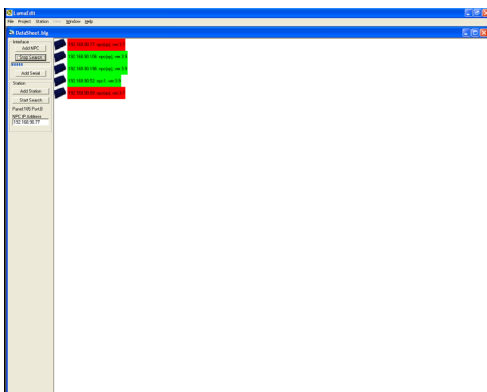
D8000 Advanced Property Display



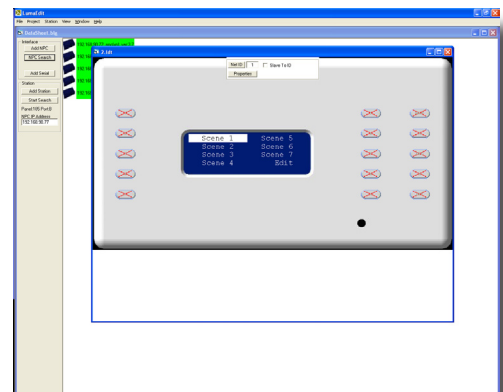
Button Programming



File Transfer



NPC Identification with Online/Offline Status



WYSIWYG LCD Programming

ORDERING INFORMATION

CAT. NO.	DESCRIPTION
LEDIT-000	Luma-Edit Software on CD

Leviton Mfg. Co., Inc. Lighting Management Systems

20497 SW Teton Avenue, Tualatin, OR 97062 1-800-736-6682 Tech Line: 1-800-959-6004 Fax: 503-404-5594 www.leviton.com/lms
 © 2009 Leviton Manufacturing Co., Inc. All rights reserved. Subject to change without notice.