



Renewable Energy Monitoring with VerifEye™ Measurement and Verification Designed For Renewable Energy Applications



Series 4100 Bidirectional Meter

TRACK ALL RENEWABLE ENERGY DATA ENSURING ACCURACY IN BILLING AND CREDITING

The VerifEye™ Series 4100 Bidirectional ModBus RTU and BACNet MS/TP Meters feature bidirectional monitoring specifically designed for renewable energy applications. The Series 4100 Meters measure power imported from the utility grid and power exported from renewable energy sources such as solar panels. This allows facility managers to track all energy data, ensuring accuracy in billing and crediting.

PROBLEM

Facility has incorporated renewable energy technologies, including wind and solar, into their building's design.

- Renewable technology will not always be able to supply all the building's power supply needs, and may create a surplus of power or little to no power depending on the season—as a result, the building is also connected to the main power grid
- Facility management must accurately account for what energy is coming from—and going—in order to properly bill tenants or receive a credit from the electricity company for how much power must be paid for
- Solution must meet California Title 24 2013 submetering requirements and be approved for the California Solar Initiative

SOLUTION

VerifEye Series 4100 Bidirectional Meter is designed to accurately track imported and exported power for renewable energy applications.

- Measures power imported from the utility grid and power exported from renewable energy sources, including wind turbines and solar panels
- Tracks all energy data for tenant billing and measurement and verification applications via VerifEye software or 3rd party software platforms
- Measures electricity flow in two directions, showing how much energy has been consumed and how much clean power has been fed back to the utility grid
- Meets all applicable California Title 24 2013 submetering requirements and is CSI Approved for the California Solar Initiative

Disclaimer: This document is for informational purposes only. Each project will have its own specific requirements for satisfying Title 24 code compliance based on a variety of factors. Other exceptions or details may apply. Review the code for specific requirements and/or consult with a professional advisor. Leviton Mfg. Co., Inc. is not responsible for any loss resulting from the use of any information found in this document. Solutions are subject to change without notice. For additional assistance, contact your local Leviton representative.

Leviton Manufacturing Co., Inc. Energy Management, Controls and Automation

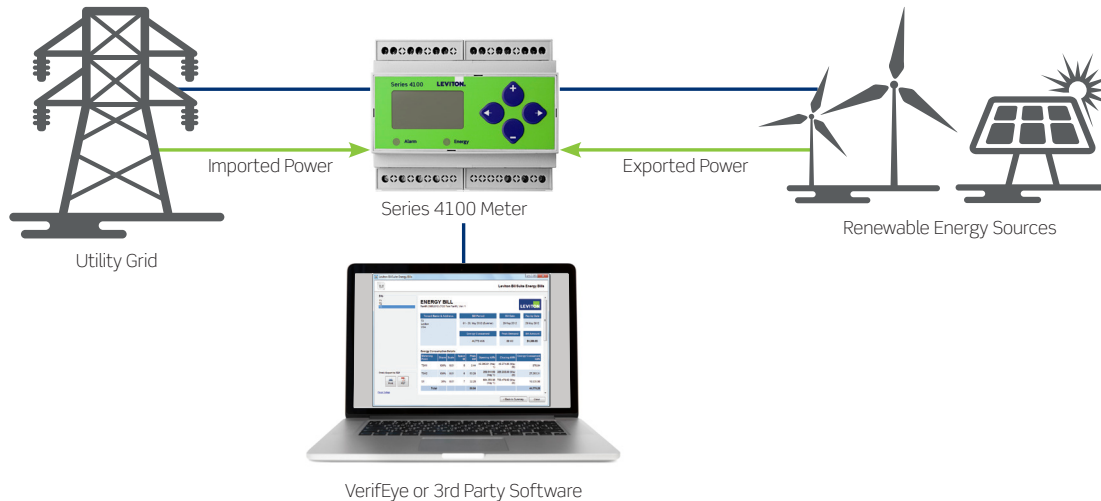
20497 SW Teton Avenue, Tualatin, OR 97062 **tech line** 800-959-6004 **fax** 503-404-5594

© 2016 Leviton Manufacturing Co., Inc. All rights reserved. Subject to change without notice.




SERIES 4100 BIDIRECTIONAL METERING SOLUTION



SERIES 4100 BIDIRECTIONAL METERING SOLUTION—RENEWABLE ENERGY MONITORING



WHAT YOU WILL NEED

SERIES 4100 BIDIRECTIONAL METERING SOLUTION		QTY.
	Series 4100 4xxxx-xxx <ul style="list-style-type: none"> Tracks and properly allocates imported and exported power NOTE: Available in multiple voltages and enclosures and kitted with flexible Rogowski Coil CTs; refer to data sheet for ordering information	1
	EMB Hub A8810-000 <ul style="list-style-type: none"> Intelligent, flexible data acquisition server that collects energy data through ModBus protocol 	1
	FREE BMO 2.0 Software <ul style="list-style-type: none"> Quickly access energy consumption information via FREE web-based M&V software NOTE: BMO 2.0 is available for free with purchase of any VerifEye Hub, including the EMB Hub (A8810)	1

Leviton Manufacturing Co., Inc. Energy Management, Controls and Automation

20497 SW Teton Avenue, Tualatin, OR 97062 tel 800-736-6682 fax 503-404-5594
 tech line (6:00AM-4:00PM PT Monday-Friday) 800-954-6004

Leviton Manufacturing Co., Inc. Global Headquarters

201 North Service Road, Melville, NY 11747-3138 tel 800-323-8920 fax 800-832-9538
 tech line (8:30AM-7:00PM ET Monday-Friday) 800-824-3005

Visit our website at: www.leviton.com/irc

©2016 Leviton Manufacturing Co. Inc. All rights reserved. Subject to change without notice.