

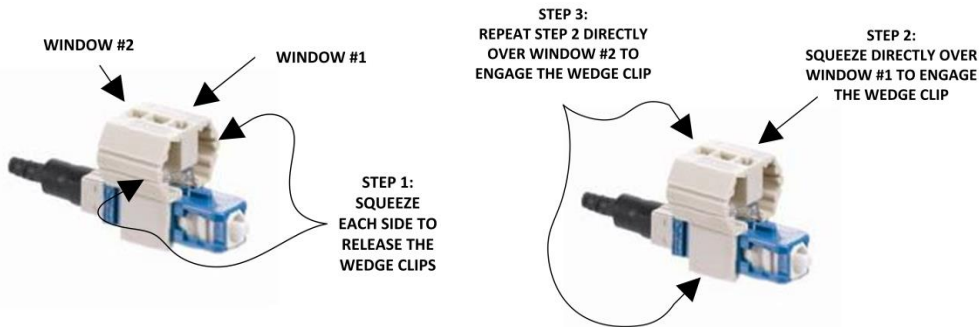
Application Note

Introduction

Leviton Network Solutions pre-polished, field installable FastCAM connectors provide a fast and easy solution with higher yields than other traditional mechanical or anaerobic connectors. While termination of the FastCAM connector is quite simple there are a few processes that will aide in consistently successful results.

Performance and Usage Recommendations

1. **The FastCAM Wedge Clip** - Each FastCAM connector should be in the open position and ready to use. The wedge clips may become disengaged during shipping. It is recommended to reset the wedge by first squeezing the wedge clip from the sides to disengage the wedges. Beginning with Window #1 (nearest the ferrule), push down on the window over each wedge tab. You should hear two clicks (the two positions where the wedge engages with the connector).



2. **Prepping the fiber** – There is a thin protective coating around the fiber called acrylate:
 - a. FastCAM connectors require the use of precision cleavers. The SC/APC connector includes an internal angled cleave and requires the APC angle Cleaver. All other (UPC) connectors include an internal flat cleave.
 - b. If acrylate is present on the fiber the cleave process will typically identify this as proper cleaving won't occur.
 - c. Make sure the fiber is properly cleaned after stripping. When the fiber is properly cleaned, a squeak should be heard.
 - d. Never force a fiber into the connector.
 - e. If the fiber does not feel like it will properly insert, re-strip the fiber, make sure the acrylate is fully removed and the fiber is properly cleaned of debris.
3. **Inserting fiber into the FastCAM connector** – If you are experiencing difficulty inserting your fiber into the connector review the following steps:
 - a. Never force a fiber into the connector.
 - b. Make sure the wedge clips are properly engaged and the CAM is fully open (a bright light in window #1).
 - c. Gently twist the fiber as it is being inserted into the connector. While the light in window #1 may not fully disperse a noticeable dim will occur indicating a proper insertion.



Application Note ID:
NS-AN-20-0006-06-19-20

Date:
091420

Author:
SM

Product Line:
FastCAM Connectors

Part Numbers Affected:
49991-xLC
49991-xSC
49991-xST