

SYSTEM DATA SHEET

CS6700 | CAT 6A SHIELDED SYSTEM

Ideal for applications that require the most advanced Cat 6A performance with added signal isolation

- Exceeds ANSI/TIA-568.2-D Cat 6A and ISO/IEC 11801-1 Class EA requirements for channel, link, and component requirements to support IEEE 10GBASE-T (802.3an) networks
- Limited lifetime warranty available when projects are installed by Leviton or Berk-Tek certified contractors
- Third-party verified by Intertek Testing Services (ETL)
- Ensures excellent alien crosstalk (AXT) and EMI/RFI immunity, with margin guarantees
- Error-free performance up to 10 Gigabit Ethernet with full duplex transmission
- Backwards compatible with Gigabit Ethernet to provide seamless migration path to 10GBASE-T and supports all Cat 6 and Cat 5e system requirements
- Atlas-X1™ jack is independently tested to exceed performance standards and features an innovative design that allows for tool-free terminations

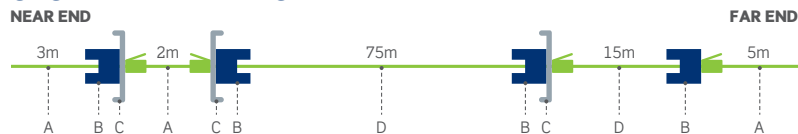
GUARANTEED* SYSTEM PERFORMANCE

CS6700 CAT 6A SHIELDED SYSTEM CHANNEL MARGIN GUARANTEES*									
Insertion Loss	NEXT	PSNEXT	ACR-F (ELFEXT)	PSACR-F (PSELFEXT)	Return Loss	ACR-N	PSACR-N	PSANEXT	PSAACR-F
3%	4 dB	6 dB	8 dB	8 dB	3 dB	7 dB	8 dB	16 dB	16 dB

*Values represent guaranteed margins to ANSI/TIA-568.2-D standard at 20°C ambient temperature. All parameters comply with ANSI/TIA-568.2-D Cat 6A and ISO/IEC 11801-1 Class EA, requirements across the entire frequency range. All values represent worst-case margins for 5- to 100-meter channel configurations. System performance margin guarantees are representative of the specific components and topologies as listed on the CS6700 solution data sheet and third-party test report. Contact your Berk-Tek Leviton Technologies technical representative for more information on alternative components and channel configurations. Details at Leviton.com.

Guaranteed System Performance applies exclusively when the system is installed and tested by Leviton Network Solutions Certified Contractors, or Berk-Tek Certified OASIS Integrators. Guaranteed margin values apply at the time of installation.

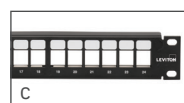
SYSTEM ELEMENTS



Patch Cord 6AS10-xx*



Jack 6ASJK-R*6



Patch Panel 4S255-S24



Cable LANmark™-10G FTP



RECOMMENDED FOR

10GBASE-T network applications and mission-critical systems

Data center channel configurations from 9 to 100 meters

Data center applications including computer clusters and end-of-row architectures

Optimal total cost of ownership for financial, health care, government, transportation, and education environments

Network applications where EMI/RFI may be present and data security is critical

Networks with high bandwidth utilization requirements

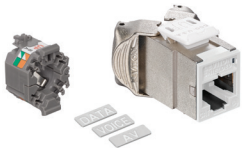
Government NIPRNET and SIRPNET protocols

PoE standards: IEEE 802.3af, 802.3at, 802.3bt, Cisco UPoE, and Power over HDBaseT™ (PoH) up to 100 watts

AV systems for high-end conference rooms and classrooms

IEEE 802.11ac applications

CAT 6A SHIELDED



LEVITON JACKS

ATLAS-X1™ CAT 6A SHIELDED QUICKPORT® JACKS

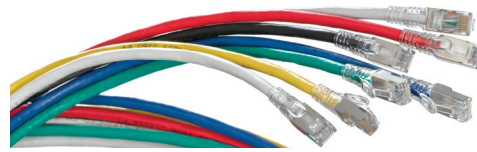
- Tested and approved for use in air-handling spaces (plenum rating) in accordance with UL Standard 2043
- Independently tested and guaranteed to exceed all component, permanent link, and channel margins
- Patented Retention Force Technology™ protects against time damage and maintains contact force between plug and jack, preventing arcing from intermittent disconnects in PoE applications
- PoE optimized time geometry prevents arcing damage where plug and jack make contact, extending the life of the jack and ensuring maximum performance (see specification sheets for full PoE capabilities)
- Solid metal body dissipates 53% more heat than plastic, minimizing damage from excess heat in PoE applications
- Available with internal shutter to protect from dust and debris
- Unique tool-free design requires no specialized termination or re-termination tool
- Short jack design supports a wider range of applications (e.g. shallow boxes, enclosures, bend radius, etc.)
- Interchangeable icons in 13 colors (VOICE, DATA, AV, and blank) make it easy to identify and track data, voice, or other functions (select jacks include color matching icons)
- Proudly manufactured in the U.S.



LEVITON PATCH PANELS

ATLAS-X1 CAT 6A SHIELDED QUICKPORT PATCH PANELS

- Stainless-steel “comb” maintains consistent ground path between jack and panel
- Available in QuickPort 1RU 24-port and 2RU 48-port angled configurations
- Accepts all shielded QuickPort jacks
- Shielding protects against Electromagnetic Interference (EMI) and Radio Frequency Interference (RFI), and provides excellent alien crosstalk (AXT) suppression



LEVITON PATCH CORDS

ATLAS-X1 CAT 6A SLIMLINE BOOT SHIELDED PATCH CORDS

- Cable construction provides data security and EMI/RFI protection
- Tested and verified for TIA Cat 6A component and channel requirements
- Nominal outer diameter of .24" to reduce cable pathway congestion in racks and cabinets
- 26-gauge stranded for maximum flexibility in any density patching environment
- SlimLine boot supports high-density patching and easy extraction with extended-reach latch release
- Snagless boot design prevents tab breakage during moves, adds, and changes
- Excellent alien crosstalk (AXT) suppression
- Country of Origin is U.S., manufactured using Berk-Tek cable
- Make-to-order custom lengths with quick turnaround times



BERK-TEK CABLE

LANMARK™ - 10G FTP CABLE

- Single overall foil shield for smaller outside diameter of 0.280" (7.1mm)
- Reduced cable termination time and material costs when compared to pair-shielded cable designs
- Increased signal isolation prevents contaminant noise from entering cabling system
- Lower bit errors resulting in increased network performance
- ETL verified to ANSI/TIA-568.2-D Category 6A
- Can be used with RJ-45 style F/UTP connectivity
- UL/ETL Listed
- 23 gauge
- Proudly manufactured in the U.S.

PART NUMBERS - Common part numbers shown. Many additional colors, lengths, and other options available online.

LEVITON JACKS	STANDARD	STANDARD (GREENPACK® 12-PACK)	SHUTTERED	ADDITIONAL ICONS
Atlas-X1 Cat 6A Shielded QuickPort Jack	6ASJK-R*6	6ASJK-C*6	6ASJK-S*6	ICONS-IC*
LEVITON PATCH PANELS		1RU, 24-PORT	1RU, 48-PORT	2RU, 48-PORT
Atlas-X1 Flat Shielded QuickPort Patch Panel+		4S255-S24	4S255-D48	4S255-S48
Atlas-X1 Angled Shielded QuickPort Patch Panel+		4S256-S24	4S256-D48	4S256-S48
LEVITON PATCH CORDS				
Atlas-X1 Cat 6A SlimLine Boot Patch Cord				6AS10-xx*
BERK-TEK CABLE			PLENUM REEL	RISER REEL
LANmark-10G FTP, red			10188969	10189804
LANmark-10G FTP, black			10189549	11077196
LANmark-10G FTP, gray			10167487	10189798

* = Jack Color: White (W), Lt. Almond (T), Ivory (I), Yellow (Y), Orange (O), Crimson (C), Dark Red (R), Purple (P), Blue (L), Green (V), Gray (G), Black (E), Brown (B)
 ^ = Jack Color: White (W), Gray (G), Black (E) + = Sold empty, load with 6ASJK jacks xx = Length: 3, 5, 7, 10, 15, 20 feet
 ° = Color: White (W), Yellow (Y), Blue (L), Black (E), Red (R), Green (G), Gray (S), Orange (O), Violet (V)