

SYSTEM DATA SHEET

CX6200 | CAT 6 PREMIUM UTP SYSTEM

Premium Cat 6 system utilizes LANmark™-2000 premium cabling for challenging applications

- Exceeds ANSI/TIA-568.2-D Cat 6 and ISO/IEC 11801-1 Class E requirements for channel, link, and component performance to support IEEE 1000BASE-T networks
- Limited lifetime warranty available when projects are installed by Leviton or Berk-Tek certified contractors
- Error-free performance up to 1 Gigabit Ethernet with full duplex transmission
- Provides additional performance margin to reliably support Gigabit Ethernet in high-noise environments
- Third-party verified by Intertek Testing Services (ETL)
- Provides bandwidth required for multimedia and broadband applications
- Guaranteed cable balance improves overall performance and reduces emissions which results in reduced transmission errors
- Enables Ethernet channel lengths beyond 100 meters

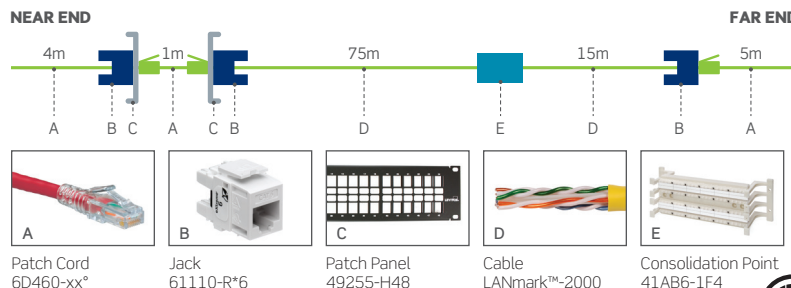
GUARANTEED* SYSTEM PERFORMANCE

| CX6200 CAT 6 PREMIUM UTP SYSTEM CHANNEL MARGIN GUARANTEES* | | | | | | | |
|--|------|--------|----------------|--------------------|-------------|-------|---------|
| Insertion Loss | NEXT | PSNEXT | ACR-F (ELFEXT) | PSACR-F (PSELFEXT) | Return Loss | ACR-N | PSACR-N |
| 5% | 8 dB | 8 dB | 9 dB | 10 dB | 5 dB | 8 dB | 9 dB |

*Values represent guaranteed margins to ANSI/TIA-568.2-D standard at 20°C ambient temperature. All parameters comply with ANSI/TIA-568.2-D Cat 6 and ISO/IEC 11801-1 Class E requirements across the entire frequency range. All values represent worst-case margins for 9- to 100-meter channel configurations. System performance margin guarantees are representative of the specific components and topologies as listed on the CX6200 solution data sheet and third-party test report. Contact your Berk-Tek Leviton Technologies technical representative for more information on alternative components and channel configurations. Details at Leviton.com.

Guaranteed System Performance applies exclusively when the system is installed and tested by Leviton Network Solutions Certified Contractors, or Berk-Tek Certified OASIS Integrators. Guaranteed margin values apply at the time of installation.

SYSTEM TEST REPORT TOPOLOGY



A Patch Cord 6D460-xx*

B Jack 61110-R*6

C Patch Panel 49255-H48

D Cable LANmark™-2000

E Consolidation Point 41AB6-1F4



RECOMMENDED FOR

1000BASE-T network applications and mission critical systems running at 1 Gigabit speeds

Network applications in data center, financial, health care, government, transportation, and education environments

Networks with high bandwidth utilization requirements

Extending network reach beyond 100 meters

PoE standards: IEEE 802.3af, 802.3at, 802.3bt, Cisco UPoE, and Power over HDBaseT™ (PoH) up to 100 watts

Any IP-based system utilizing UTP cabling

AV systems for high-end conference rooms and classrooms

6

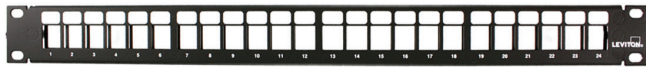
CAT 6 PREMIUM



LEVITON JACKS

EXTREME® CAT 6 COMPONENT-RATED QUICKPORT® JACKS

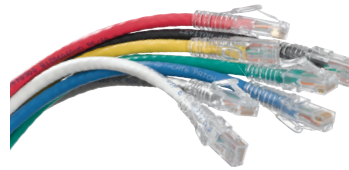
- Exceed requirements for Category 6 described in ANSI/TIA-568.2-D and Class E requirements described in ISO/IEC 11801-1
- Patented Retention Force Technology™ protects against time damage and maintains contact force between plug and jack, preventing arcing from intermittent disconnects in PoE applications
- Circuit board technology for exceptional high-frequency operation
- Gas-tight insulation displacement contacts provide excellent conductor retention and resistance to surface-contact oxidation for life of the system
- Pair Separation Tower design facilitates separation of conductors and minimizes untwisting
- Patented dual-layer wiring label simplifies punchdown and reduces rework
- 90 or 180 degree bi-directional entry eases cable bend radius in back boxes
- Supports Power over Ethernet (PoE) —see individual product specifications sheets for full capabilities
- Proudly manufactured in the U.S.



LEVITON PATCH PANELS

CAT 6 110-STYLE AND QUICKPORT PATCH PANELS

- Exceed requirements for Category 6 described in ANSI/TIA-568.2-D and Class E requirements described in ISO/IEC 11801-1
- 110-Style available in flat and angled configurations
- QuickPort available in flat, angled, recessed, recessed angled, and Zero-U configurations
- Gas-tight insulation displacement contacts provide excellent conductor retention and resistance to surface-contact oxidation for life of the system
- 110-Style patch panels include color codes for T568A/B wiring schemes
- Magnifying lens on select models ensures visibility of port labels



LEVITON PATCH CORDS

EXTREME CAT 6 SLIMLINE BOOT PATCH CORDS

- Tested and verified for TIA Category 6 component requirements
- 24-gauge stranded for maximum flexibility
- Nominal outer diameter of .22" to reduce cable pathways in racks and cabinets
- SlimLine boot supports high-density patching and extraction with extended-reach latch release
- Made-to-order custom lengths are quickly available for top-of-rack, end-of-row, or general network patching



BERK-TEK CABLE

LANMARK™ - 2000 PREMIUM CAT 6 CABLE

- Performance margin allows reliable support for Gigabit Ethernet, even in high-noise environments
- Full duplex operation capable over four cable pairs enables multimedia, broadband video, analog video, and other future applications
- ETL LANmark Verified beyond ANSI/TIA-568.2-D Category 6 performance
- Independently verified headroom of 10dB beyond standard on NEXT, PSNEXT, ACR, and PSACR ensure exceptional performance
- Improved ACR means stronger signal reaches the receiver for cleaner video and data transmission
- Outer diameter 0.220" (5.69mm), CMP
- Characterized to 600 MHz, 350 MHz greater than the standard
- UL/ETL Listed
- 23-gauge
- Proudly manufactured in the U.S.

PART NUMBERS - Common part numbers shown. Many additional colors, lengths, and other options available online.

LEVITON JACKS

eXtreme Cat 6 Component-Rated QuickPort Jack

61110-R*6

LEVITON PATCH PANELS

Cat 6 Flat 110-Style Patch Panel

1RU 24-PORT

1RU 48-PORT

2RU 48-PORT

2RU 72-PORT

Cat 6 Angled 110-Style Patch Panel

69586-U24

69586-U48

Flat QuickPort Patch Panel+

69587-U24

69587-U48

Angled QuickPort Patch Panel +

49255-H24

49255-Q48

49255-H48

49255-D72

49256-H24

49256-D48

49256-H48

49256-D72

LEVITON 110-STYLE WALL-MOUNT WIRING BLOCK KIT

Cat 6 110-Style Wiring Block Kit, includes 96-pair block with legs, labels, and 24 C-4 clips*

96-PAIR

41AB6-1F4

LEVITON PATCH CORDS

eXtreme Cat 6 SlimLine Boot UTP Patch Cord

6D460-xx*

BERK-TEK CABLE

LANmark-2000 Premium Cat 6 Cable, blue

PLENUM REEL

PLENUM REEL-IN-A-BOX

RISER REEL

RISER REEL-IN-A-BOX

LANmark-2000 Premium Cat 6 Cable, white

10163222

10163780

10167476

10167477

LANmark-2000 Premium Cat 6 Cable, gray

10167311

10167312

10167480

10167481

10167464

10167307

10167478

10167479

* = Color: White (W), Lt. Almond (T), Ivory (I), Yellow (Y), Orange (O), Crimson (C), Dark Red (R), Purple (P), Blue (L), Green (V), Gray (G), Black (E), Brown (B)

+ = Sold empty, load with 61110 jacks * = For consolidation point. Legs are non-removable and not sold separately

xx = Length: 1 (01), 3 (03), 5 (05), 7 (07), 10 (10), 15 (15), 20 (20) feet

* = Color: White (W), Yellow (Y), Blue (L), Black (E), Red (R), Green (G), Gray (S)