

# Getting Started Guide



**DIMMER**

READ THESE INSTRUCTIONS BEFORE INSTALLING

DI-000-ZW6HD-02A

Cat. No. ZW6HD

**FCC COMPLIANCE STATEMENT**  
The enclosed device complies with Part 15 of the FCC Rules. Operation is subject to the following two conditions: (i) This device may not cause harmful interference (ii) This device must accept any interference received, including interference that may cause undesired operation. Any changes or modifications not expressly approved by Leviton could void the user's authority to operate this equipment. This equipment has been tested and found to comply with the limits for a Class B digital device, pursuant to part 15 of the FCC Rules. These limits are designed to provide reasonable protection against harmful interference in a residential installation. This equipment generates uses and can radiate radio frequency energy and, if not installed and used in accordance with the instructions, may cause harmful interference to radio communications. However, there is no guarantee that interference will not occur in a particular installation. If this equipment does cause harmful interference to radio or television reception, which can be determined by turning the equipment off and on, the user is encouraged to try to correct the interference by one or more of the following measures:

- Reorient or relocate the receiving antenna.
- Increase the separation between the equipment and receiver.
- Connect the equipment into an outlet on a circuit different from that to which the receiver is connected.
- Consult the dealer or an experienced radio/TV technician for help.

**FCC CAUTION**  
Any changes or modifications not expressly approved by Leviton Manufacturing Co., Inc., could void the user's authority to operate the equipment.

**FCC SUPPLIER'S DECLARATION OF CONFORMITY**  
Model ZW6HD - Z-Wave Dimmer is manufactured by Leviton Manufacturing Co., Inc. 201 N. Service Road, Melville, NY 11747. www.leviton.com. This device complies with part 15 of the FCC Rules. Operation is subject to the following two conditions: (1) This device may not cause harmful interference, and (2) this device must accept any interference received, including interference that may cause undesired operation.

**IC STATEMENT**  
This device complies with Industry Canada license-exempt RSS standard(s). Operation is subject to the following two conditions: (1) this device may not cause interference, and (2) this device must accept any interference, including interference that may cause undesired operation of the device.

**RF EXPOSURE AND CO-LOCATION**  
To comply with FCC OET Bulletin 65 and ICES 005 RF exposure limits for general population and uncontrolled exposure, this device shall be installed and operated with a minimum distance of 7.9 in. (20 cm) between the radiator and your body. Also, must not be co-located or operated in conjunction with any other antenna or transmitter.

**COPYRIGHT AND TRADEMARK INFORMATION**  
Decora and Decora Smart are the registered trademarks of Leviton Manufacturing Co., Inc., registered in the U.S., Canada, Mexico and China. Z-Wave and Z-Wave Plus are registered trademarks of the Z-Wave Alliance. Use herein of other third party trademarks, service marks, trade names, brand names and/or product names are for informational purposes only, are/ may be the trademarks of their respective owners; such use is not meant to imply affiliation, sponsorship, or endorsement. No part of this document may be reproduced, transmitted or transcribed without the express written permission of Leviton Manufacturing Co., Inc.

**PATENT INFORMATION**  
Patents covering this product, if any, can be found on Leviton.com/patents.



## Welcome



The Decora Smart Z-Wave™ 800 Series Dimmer is designed for use with modern Z-Wave hubs and makes it easier than ever to control your lights how you want.

This Dimmer is compatible with any Z-Wave enabled network, regardless of the manufacturer, and can also be used with other devices displaying the Z-Wave logo. As well, this device can act as a repeater to increase the reliability of the Z-Wave network.

The Decora Smart Z-Wave 800 Series Dimmer looks right at home with your other Decora® in-wall devices and features intuitive on/off and dim/bright control. Add the Dimmer to your Z-Wave hub of choice to enable app commands, scheduling, and voice control of connected lighting.

### We are here to help

- ONLINE**  
decorasmartsupport.leviton.com
- CHAT**  
www.leviton.com/support
- EMAIL**  
dssupport@leviton.com
- CALL**  
1-800-824-3005 (USA)  
1-800-405-5320 (Canada)

1



## Your dimmer works with:

- Dimmable LED, dimmable CFL, incandescent, and MLV lighting.
- Do not use your dimmer with metal wallplates, electronic low voltage, motor loads, or aluminum wire.
- When two or more dimmers are installed next to each other, the load ratings become 500W incandescent and 500VA MLV for each dimmer. No reduction is necessary if the load is LED or CFL.
- For compatible LED bulbs, go to [leviton.com/led](http://leviton.com/led)
- **Additional self-service support options can be found at [leviton.com/decorasmart](http://leviton.com/decorasmart)**



RATINGS	
General Use	120VAC, 60Hz
LED/CFL	300W
Incandescent	600W
MLV	600VA
Operating Temp	32°F - 104°F (0°C - 40°C)
Operating Humidity	10% - 90% non-condensing
NETWORK	
Z-Wave Plus	908.40, 908.42, 916.00 MHz

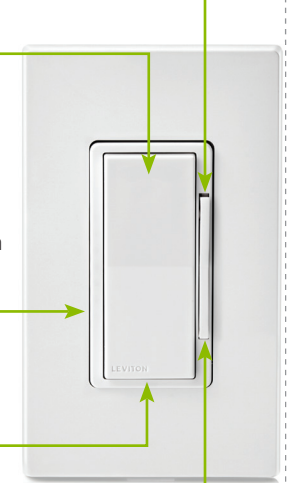
2



## Features

- Off means off**  
Ensures low-wattage LED bulbs always turn OFF.
- Rocker**
  - Press the top to turn the light ON.
  - Press the bottom to turn the light OFF.
  - Double press the top to turn ON at maximum brightness with no fade.
  - Double press the bottom to turn OFF with no fade.
- Brightness indicator lights**
  - Displays light level when adjusting brightness.
- Status LED**
  - Illuminates when the lights are OFF so you can find the dimmer in the dark.
  - Provides connectivity feedback.

**Dim/bright bar**  
Manually adjust light levels.



**Air gap switch**  
This feature will stop power to the dimmer. Gently pull bottom out until a click is heard. Power to the dimmer and indicator lights will turn off. After servicing is complete, push back in for normal operation.

3



## What you need to make it work:

- A Z-Wave compatible hub.
- A Z-Wave mesh network to join. Ensure your device is installed within **50 feet** of the hub or another Z-Wave enabled repeater. Communication through exterior surfaces may reduce transmission distances.
- An available interior switch wallbox with a line (hot), load, neutral, and ground wire.
- To control the dimmer from more than one location such as in a 3-way or multi-way, you will need a wired DD00R or DD0SR Companion device. Learn more about Companion devices and find connection instructions at [leviton.com/decorasmart](http://leviton.com/decorasmart)

4



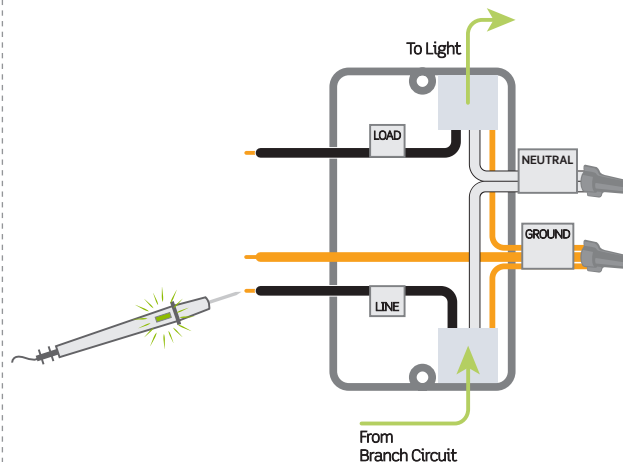
## Identify your wires

**WARNING: TO AVOID FIRE, SHOCK, OR DEATH, turn off power at the circuit breaker.**

### Check your wallbox:

1. Remove wallplate and disconnect existing switch.
2. Restore power. Carefully test wires with voltage tester to find the line (hot) wire.
3. Turn OFF power at the circuit breaker.
4. Mark the wires as shown below. Please note neutral wires are required to operate this device.

**Quick tip:** Neutral wires are typically white and will be found bundled inside the electrical box.



If your wallbox looks different, call an electrician.

5



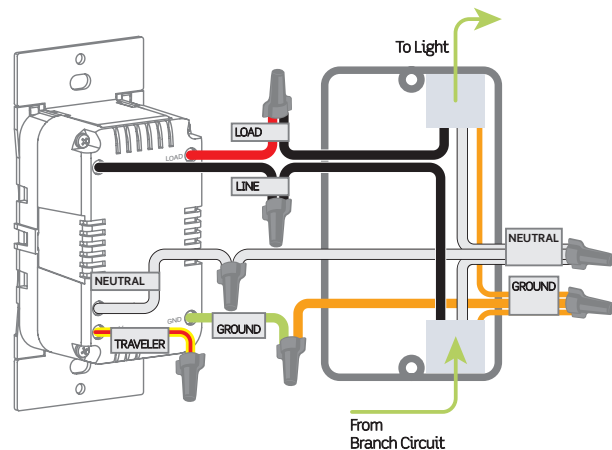
## Wire your dimmer

### Single-pole installation:

1. Work only one connection at a time.
2. Connect wires as shown using the included wire connectors.

### NOTES:

- Neutral connection is required.
- The YELLOW/RED traveler wire is only used in 3-way applications; remember to put a wire connector on the YELLOW/RED traveler even if not in use.



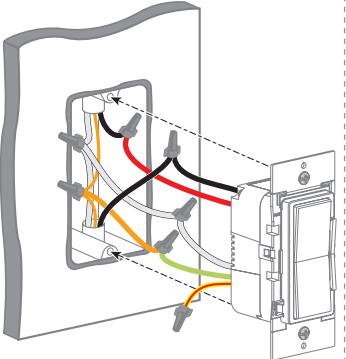
If your wallbox contains a different wiring configuration, contact Leviton's technical support team or consult an electrician.

6



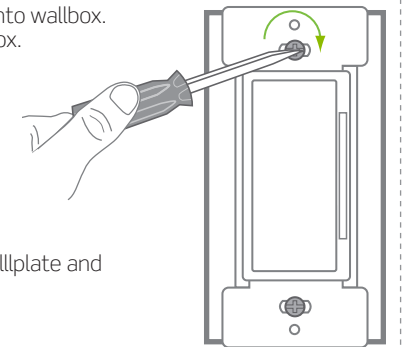
## Test and install

1. Restore power.
2. After powering ON the dimmer to confirm it is receiving power, turn the power back OFF again at the breaker prior to completing the installation.



**WARNING: Turn OFF power at the circuit breaker before screwing in your dimmer.**

3. Gently push wires into wallbox. Screw dimmer to box.



4. Snap on Decora wallplate and restore power.

**Congratulations!**  
Your Decora Smart Dimmer is ready to control your light.

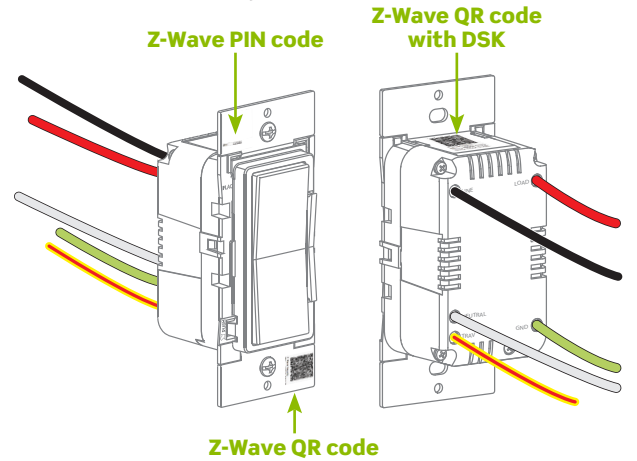
7



## SmartStart

Your Decora Smart Z-Wave 800 Series Dimmer is compatible with SmartStart.

SmartStart enabled devices can be added to a Z-Wave network by scanning the Z-Wave QR code on the top of the device, on the strap, or on the back of the unit box with a compatible Z-Wave controller that supports SmartStart inclusion. The device should be added automatically within 10 minutes of being switched on and in the network vicinity.



The QR code label with DSK is located on the top of the device. If required, the PIN code is underlined on the label. The PIN code is also located on the front strap.

8

## Setup mode

### Enter setup mode:

1. Hold the top rocker for 7 seconds. The Status LED will turn AMBER, release and the Status LED will blink AMBER.
2. The device is now in setup mode.

### Exit setup mode:

1. Hold the top rocker for 7 seconds until the LED turns AMBER. The device will return to normal operation.

## Adding the Decora Smart Z-Wave 800 Series Dimmer to a hub

When using a Z-Wave Plus certified hub, choose network wide inclusion or SmartStart. If network wide inclusion does not discover your device, try classic inclusion.

### Network wide inclusion to a Z-Wave network

Network Wide Inclusion allows your device to be included into the network using devices already paired to your home automation hub.

### Start with the devices closest to the hub and work your way outward.

1. Enter setup mode (see above).
2. Tap the top rocker 1 time. The Status LED will quickly flash GREEN. The device is now ready to learn into the Z-Wave network.
3. Use the Z-Wave controller to complete the device enrollment process (follow the Z-Wave controller instructions)
4. The device's Status LED will turn off and then flash GREEN 4 times to confirm it has been successfully added to a Z-Wave network. If the device was not successfully added, the Status LED will flash RED 4 times.

9

## Advanced options

Your device supports Over-the-Air updates using the Z-Wave Firmware Update Meta Data command class for standardized firmware updates. The following advanced options can be configured over the Z-Wave network by a compatible Z-Wave controller.

### Fade ON time

- Parameter No: 1, Length: 4 Byte
- Valid values = 0 to 253 (default 2)
  - 0 = Instant ON
  - 1 - 127 = Seconds: 1 - 127 seconds
  - 128 - 253 = Minutes: 1 - 126 minutes

### Fade OFF time

- Parameter No: 2, Length: 4 Byte
- Valid values = 0 to 253 (default 2)
  - 0 = Instant ON
  - 1 - 127 = Seconds: 1 - 127 seconds
  - 128 - 253 = Minutes: 1 - 126 minutes

### Minimum dim light level

- Parameter No: 3, Length: 4 Byte
- Valid Values = 0 to 99 (default 10)

### Maximum brightness light level

- Parameter No: 4, Length: 4 Byte
- Valid values = 0 to 99 (default 99)

### Preset light level or return to last level

- Parameter No: 5, Length: 4 Byte
- Valid values = 0 to 99 (default 0)
  - 0 = Return to last level
  - 1 - 99 = Preset light level

### LED dim/bright bar behavior

- Parameter No: 6, Length: 4 Byte
- Valid Values = 0 to 255 (default 3)
  - 0 = Level Indicators Off
  - 1 - 254 = Level Indicator Timeout (seconds)
  - 255 = Levels Always ON

### Status LED configuration

- Parameter No: 7, Length: 4 Byte
- Valid Values = 0 to 255 (default 255)
  - 0 = Status LED OFF
  - 254 = Status LED ON when load is ON
  - 255 = Status LED ON when load is OFF (locator mode)

14

## Classic inclusion to a Z-Wave network

For older controllers, Classic Inclusion is supported. Depending on the age of the controller it may need to be 3 to 35 feet from the device when including.

1. Enter setup mode (see page 9).
2. Follow the Z-Wave controller instructions to enter inclusion mode.
3. Tap the top rocker 1 time, the Status LED will quickly flash GREEN.
4. The Z-Wave controller will confirm successful inclusion to the Z-Wave network.

## Exclusion from a Z-Wave network

The Exclusion command found in the Z-Wave controller is used as a best practice for removing devices from a Z-Wave network.

1. Enter setup mode (see page 9).
2. Follow the Z-Wave controller instructions to enter exclusion mode.
3. Tap the top rocker 1 time, the Status LED will quickly flash GREEN.
4. The Z-Wave controller will confirm successful exclusion from the Z-Wave network.

10

## Customization

### Minimum dim and maximum brightness level

You can adjust the minimum dim level to increase compatibility with LED bulbs as well as the maximum brightness.

#### To adjust the minimum dim level:

1. Enter setup mode (see page 9).
2. Tap the top rocker 5 times. The Status LED will quickly flash RED/AMBER.
3. Tap the top rocker 1 time. The Status LED will quickly flash AMBER.
4. Use the dim/bright bar to adjust the minimum dim level.
5. Hold the top of the rocker to exit. The Status LED will quickly flash AMBER to confirm.

#### To adjust the maximum bright level:

1. Enter setup mode (see page 9).
2. Tap the top rocker 5 times. The Status LED will quickly flash RED/AMBER.
3. Tap the top rocker 2 times. The Status LED will quickly flash RED.
4. Use the dim/bright bar to adjust the maximum brightness level.
5. Hold the top of the rocker to exit. The Status LED will quickly flash AMBER to confirm.

### Preset light level

#### To set a preset light level:

1. Enter setup mode (see page 9).
2. Tap the top rocker 7 times. The Status LED will quickly flash RED/AMBER.
3. Use the dim/bright bar to adjust the desired preset light level.
4. To set the dimmer to "Return to last level", set the dim/bright level to 0% or OFF.
5. Hold the top of the rocker to exit. The Status LED will quickly flash AMBER to confirm.

**NOTE:** The dimmer is set to "Return to last level" by default.

11

## Customization (continued)

### Fade on and fade off time

#### To adjust the fade on time:

1. Enter setup mode (see page 9).
2. Tap the top rocker 6 times. The Status LED will quickly flash GREEN/RED.
3. Tap the top rocker 1 time. The Status LED will quickly flash AMBER/RED.
4. Use the dim/bright bar to adjust the fade on time based on the chart.
5. Hold the top of the rocker to exit. The Status LED will quickly flash AMBER to confirm.

LED	VALUE
7 (top LED)	30 seconds
6	16 seconds
5	8 seconds
4	4 seconds
3	2 seconds
2	1 second
1 (bottom LED)	Instant

#### To adjust the fade off time:

1. Enter setup mode (see page 9).
2. Tap the top rocker 6 times. The Status LED will quickly flash GREEN/RED.
3. Tap the top rocker 2 times. The Status LED will quickly flash RED.
4. Use the dim/bright bar to adjust the fade off time based on the chart.
5. Hold the top of the rocker to exit. The Status LED will quickly flash AMBER to confirm.

### LED dim/bright bar

#### To adjust LED dim/bright bar behavior:

1. Enter setup mode (see page 9).
2. Tap the top rocker 8 times. The Status LED will quickly flash RED.
3. Use the dim/bright bar to adjust the amount of time the dim/bright bar LEDs are lit after the dim/bright bar is pressed based on the chart.
4. Hold the top of the rocker to exit. The Status LED will quickly flash AMBER to confirm.

LED	VALUE
7 (top LED)	No timeout
6	240 seconds
5	30 seconds
4	5 seconds
3	3 seconds
2	1 second
1 (bottom LED)	Instant

12

## Customization (continued)

### Status LED

Follow the below steps to change the functionality of the Status LED.

#### Status LED ON when load is ON:

1. Enter setup mode (see page 9).
2. Tap the top rocker 4 times. The Status LED will quickly flash GREEN/AMBER.
3. Tap the top rocker 1 time. The Status LED will flash GREEN 4 times to confirm the selection.

#### Status LED ON when load is OFF (default)

1. Enter setup mode (see page 9).
2. Tap the top rocker 4 times. The Status LED will quickly flash GREEN/AMBER.
3. Tap the top rocker 2 times. The Status LED will flash AMBER 4 times to confirm the selection.

#### Status LED OFF:

1. Enter setup mode (see page 9).
2. Tap the top rocker 4 times. The Status LED will quickly flash GREEN/AMBER.
3. Tap the top rocker 3 times. The Status LED will flash RED 4 times to confirm the selection.

### Control Timing

Control Timing can be used to help improve dimming performance if the lights pulse at certain dimming levels or when fading on or off.

#### Normal

1. Enter setup mode (see page 9).
2. Tap the top rocker 4 times. The Status LED will quickly flash GREEN/AMBER.
3. Tap the top rocker 9 times. The Status LED will flash GREEN 8 times to confirm the selection.

#### Medium

1. Enter setup mode (see page 9).
2. Tap the top rocker 4 times. The Status LED will quickly flash GREEN/AMBER.
3. Tap the top rocker 10 times. The Status LED will flash AMBER 8 times to confirm the selection.

#### Extended

1. Enter setup mode (see page 9).
2. Tap the top rocker 4 times. The Status LED will quickly flash GREEN/AMBER.
3. Tap the top rocker 11 times. The Status LED will flash RED 8 times to confirm the selection.

13

## Advanced options (continued)

### Bulb type

- Parameter No: 8, Length: 4 Byte
- Valid Values = 0 to 3 (default 1)
  - 0 = Incandescent
  - 1 = LED
  - 2 = CFL
  - 3 = MLV

### Control timing

- Parameter No: 9, Length: 4 Byte
- Valid Values = 0 to 2 (default 0)
  - 0 = Normal
  - 1 = Medium
  - 2 = Extended

### ZW6HD supported associations and supported Z-Wave classes

#### Group number: 1

- Maximum Nodes: 5
- Name: Lifeline
  - A notification is sent to the nodes in this association group when a Lifeline event occurs.
  - All nodes in the association group receive notification of Status changes.
- Profile: 0x0001
- Command Class Associations
  - 0x5A01: COMMAND\_CLASS\_DEVICE\_RESET\_LOCALLY, DEVICE\_RESET\_LOCALLY\_NOTIFICATION
  - 0x2603: MULTI-LEVEL SWITCH REPORT
  - 0x8703: COMMAND\_CLASS\_INDICATOR (0x87) and INDICATOR\_REPORT\_V3 (0x03)

#### Group number: 2

- Maximum Nodes: 5
- Name: Multilevel switch set
  - All nodes in the association group receive a command based on ON/OFF button presses.
- Profile: 0x2001
- Command Class Associations
  - 0x2601: COMMAND\_CLASS\_SWITCH\_MULTILEVEL.SWITCH\_MULTILEVEL\_SET
  - 0x2604: COMMAND\_CLASS\_SWITCH\_MULTILEVEL.SWITCH\_MULTILEVEL\_START\_LEVEL\_CHANGE
  - 0x2605: COMMAND\_CLASS\_SWITCH\_MULTILEVEL.SWITCH\_MULTILEVEL\_STOP\_LEVEL\_CHANGE

15

## Advanced options (continued)

### Group number: 3

- Maximum Nodes: 5
- Name: Basic set
  - All nodes in the association group receive a command based on ON/OFF button presses.
- Profile: 0x2001
- Command Class Associations
  - 0x2001: COMMAND\_CLASS\_BASIC.BASIC\_SET

### BASIC command class is mapped to the switch multilevel class, as follows:

- Basic Set = 255 maps to Multilevel Switch Set = 255
- Basic Set = 0 maps to Multilevel Switch Set = 0
- Basic Set = 1-99 maps to Multilevel Switch Set = 1-99
- Basic Get/Report maps to Multilevel Switch Get/Report

### Supports the following additional Z-Wave classes:

- Z-WAVE PLUS INFO v2 non-secured
- ASSOCIATION v2 secured
- ASSOCIATION GRP INFO v3 secured
- S2 SECURITY v1 non-secured
- VERSION v3 secured
- MANUFACTURER SPECIFIC v2 secured
- CONFIGURATION v4 secured
- DEVICE RESET LOCALLY v1 secured
- POWERLEVEL v1 secured
- SWITCH MULTILEVEL v4 secured
- BASIC v2 secured
- SCENE ACTUATOR CONF v1 secured
- SCENE ACTIVATION v1 secured
- TRANSPORT SERVICE v2 non-secured
- FIRMWARE UPDATE MD v5 secured
- SUPERVISION v1 non-secured
- INDICATOR v3 secured
- MULTI CHANNEL ASSOCIATION v3 secured

## ZW6HD indicator function

Supports the indicator command class with indicator ID 0x50 (identify). When an indicator command is received the Status LED on the device will quickly flash GREEN.

16

## Factory default

When removing a Z-Wave device from the network, it is best practice to use the exclusion process. In situations where a device needs to be returned to factory default settings, follow the steps below. Please use this procedure only when the network primary controller is missing or otherwise inoperable.

1. Hold the top rocker for 14 seconds: After the first 7 seconds, the Status LED will turn AMBER. Continue holding until the Status LED flashes RED/AMBER then release.
2. The device will reset.

## What to do if...

### When power is applied, the light turns ON but the dimmer is not able to change the light level:

- For proper operation the dimmer needs a line (hot), neutral, load, and ground connection.
- Confirm the WHITE conductor is a neutral.
- If using LED or CFL bulbs, make sure they are dimmable.

### The dimmer does not dim low enough or begins to flicker at the low end of the dimming range:

- Use the procedure described in the Customization section on page 12 to increase the minimum dim level to the point that does not cause the LED bulb to flicker.

### Intermittent dimmer operation:

- Confirm the load does not exceed its ratings.

### How do I clean my device?

- To clean, use a damp cloth with mild soap. DO NOT use disinfecting products, including foggers, sprays or other types of atomized cleaning agents.

Visit [leviton.com/decorasmart](http://leviton.com/decorasmart) or contact technical services for additional help.

17

## Safety first

### WARNINGS:

- **TO AVOID FIRE, SHOCK, OR DEATH; TURN OFF POWER** at circuit breaker or fuse and test that power is off before wiring!
- **TO AVOID FIRE, PERSONAL INJURY OR PROPERTY DAMAGE, DO NOT** install to control a receptacle, a motor, or transformer operated appliance.
- This product is to be installed and/or used in accordance with electrical codes and regulations.
- For indoor use only.
- If you are unsure about any part of these instructions, consult an electrician.

### CAUTIONS:

- Use with compatible 120V dimmable LED/CFL bulbs, incandescent, halogen, or magnetic-low-voltage (MLV) fixtures only. Use a Leviton electronic low voltage dimmer to control electronic (solid state) low voltage transformers. For a list of compatible LED and CFL bulbs refer to [www.leviton.com](http://www.leviton.com).
- DO NOT mix bulb types when multiple bulbs are used with one dimmer. Using the same make/model of each bulb will enhance dimmer performance.
- The Decora Smart ZW6HD dimmer is not compatible with standard 3-way or 4-way switches. It must be used with up to 4 Decora® Smart DD00R-DL or DD0SR companions for wired multi-location dimming.
- Maximum wire length from dimmer to all installed companion devices cannot exceed 300 ft (90m).
- Save this instruction sheet. It contains important technical data along with testing and troubleshooting information which will be useful after installation is complete.
- Dimmer may feel warm to the touch during normal operation.
- Recommended minimum wallbox depth is 2-3/4".
- Use this dimmer with copper or copper clad wire only.

### ADDITIONAL RATINGS:

- Purpose of control: Operating Control
- Action Control Type: 1
- Pollution Degree: 2
- Impulse Voltage: 2500V
- Disconnection Type: Micro

## Limited 2 year warranty & exclusions

For Leviton's limited product warranty, go to [www.leviton.com](http://www.leviton.com). For a printed copy of the warranty, call 1-800-824-3005.

### FOR CANADA ONLY

For warranty information and/or product returns, residents of Canada should contact Leviton in writing at Leviton Manufacturing of Canada ULC to the attention of the Quality Assurance Department, 165 Hymus Blvd, Pointe-Claire (Quebec), Canada H9R 1E9 or by telephone at 1-800-405-5320.

# ARTWORK PRINT SPECIFICATIONS



**PART NUMBER** DI-000-ZW6HD-02A **REV** \_\_\_\_\_ **DESCRIPTION** Instruction Sheet

**\* Artwork must be printed at 100% (1:1 scale)**

## Material Specifications: North America Suppliers

- \* Thickness: 0.0028
- \* Material: 60lb Gloss Text Paper
- \* Recycled Content: N/A
- \* Exterior Brightness: 90%
- \* Finish: Gloss - 72

## Material Specifications: Asia Suppliers

- \* Thickness: 84 um
- \* Material: 105G Coated Book Paper
- \* Recycled Content: N/A
- \* Exterior Brightness: N/A
- \* Finish: N/A

\* For manuals - designates cover specifications

## Color:

No. of Color(s): 6 over 6

1: PMS376

2: PMS2758  Spot

3: CMYK

4: \_\_\_\_\_  CMYK

## Fonts:

1: Scene Std

2: \_\_\_\_\_

3: \_\_\_\_\_

4: \_\_\_\_\_

## Die Line Key:

- Perforate
- Die Cut
- Fold Line
- Kiss Cut
- Cellophane
- Glue

## MANUAL INTERIORS / BINDERY / FOLD SCHEME :

Body Material: \_\_\_\_\_

Thickness: \_\_\_\_\_

### Bindery

- Die cut  Fold  Saddle Stitch
- Perfect Bind  Drill  Trim

No. of Color(s): \_\_\_\_\_ over \_\_\_\_\_

1: \_\_\_\_\_

2: \_\_\_\_\_  Spot

3: \_\_\_\_\_

4: \_\_\_\_\_  CMYK

### Fonts:

1: \_\_\_\_\_

2: \_\_\_\_\_

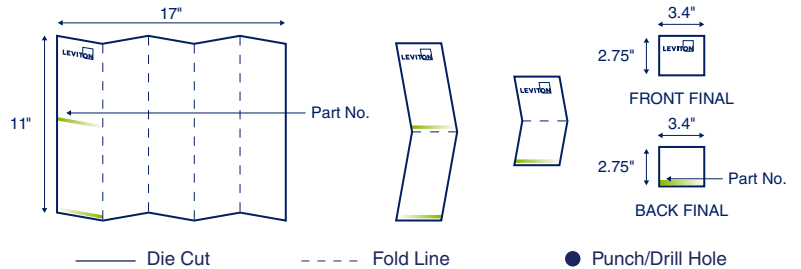
3: \_\_\_\_\_

4: \_\_\_\_\_

## PROCESS :

- Offset  Flexo
- Other \_\_\_\_\_
- Line Screen: \_\_\_\_\_
- Angle: \_\_\_\_\_
- Resolution: \_\_\_\_\_

## DIMENSIONS / FOLD SCHEME / BINDERY DIAGRAM



## COMMENTS :

The information in this document is the exclusive PROPRIETARY property of LEVITON MANUFACTURING COMPANY, INC. It is disclosed with the understanding that acceptance or review by the recipient constitutes an undertaking by the recipient. (1) to hold this information in strict confidence, and (2) not to disclose, duplicate, copy, modify or use the information for any purpose other than that for which disclosed.

## FOR LEVITON USE ONLY

- Approvals:  Plant 08 J. Tang  QA S. Barbour  PM J. Shurte  
cc: C. Houyong  Mktg G. Rhoades  Eng R. Gumina  S & A B. Grande  
 Cust Provide to J. Shurte  Other V. LoNigro  Other C. Buttitta

PN-ARN: SA0049-7457 ECR Number: \_\_\_\_\_ Pilot Rev: X8

Artist: Z. Reisman Released Artwork Format: Production PDF Artwork Release Date: 12/19/23

Notes: \_\_\_\_\_  Vector Photo  Color Corrected Photo