

Straight Blade Plugs and Connectors

LEVITON[®]

Cat. Nos. 48642, 48643
 Rated: 15A - 125V
 • For lamps and small appliances

Cat. Nos. 48646, 48648
 Rated: 15A - 125V
 • For power tools and large appliances
 • Cord clamp relieves strain on wiring terminals

PK-93287-10-02-0D

INSTALLATION INSTRUCTIONS

ENGLISH

WARNINGS AND CAUTIONS

- **TO AVOID FIRE, SHOCK, OR DEATH; TURN OFF POWER AT CIRCUIT BREAKER OR FUSE AND TEST THAT POWER IS OFF BEFORE WIRING!**
- To be installed and/or used in accordance with appropriate electrical codes and regulations.
- If you are unsure about any part of these instructions, consult an electrician.
- Use this device with **copper or copper clad wire only**.
- For indoor applications **only**.

INSTALLATION

CAT. NO. 48642

CAUTION: DO NOT cut or **DAMAGE** cord jacket or insulation except where indicated.
NOTE: Use with 2-wire flexible cords 3/8" (.9 cm) maximum diameter, 18-2 to 14-2 AWG.
NOTE: Underwriter's Knot recommended to reduce possible cord strain that could loosen terminal connections.

1. Pry body out of cover (*Diagram A, Fig. 1*).
2. Feed cord through cover (*Diagram A, Fig. 2*).
3. Remove cord jacket and separate conductors (*Diagram A, Fig. 3*).
4. Tie Underwriter's Knot and pull tight (*Diagram A, Fig. 4*). Cut conductors to size indicated.
5. Remove insulation from end of each conductor to expose 1/2" (1.3 cm) copper strands (*Diagram A, Fig. 5*).
6. **Connect conductors to terminal screws as follows (*Diagram A, Fig. 5*):**
NOTE: Back out terminal screws until they stop turning (do not force past this point).
 • Twist copper strands of each conductor tightly together.
 • Loop conductor clockwise, 3/4 turn around terminal screw and tighten screw securely.
 • Cut off any wire strands not secure under terminal screw.
7. Seat UL knot and push body into cover until both tabs lock in slots (*Diagram A, Fig. 6*).

CAT. NO. 48643

CAUTION: DO NOT cut or **DAMAGE** cord jacket or insulation except where indicated.
NOTE: Use with 2-wire flexible cords 3/8" (.9 cm) maximum diameter, 18-2 to 14-2 AWG.

1. Pry body out of cover (*Diagram B, Fig. 1*).
2. Feed cord through cover (*Diagram B, Fig. 2*).
3. Remove cord jacket and conductor insulation (*Diagram B, Fig. 3*).
4. **Connect conductors to terminal screws as follows (*Diagram B, Fig. 4*):**
NOTE: Back out terminal screws until they stop turning (do not force past this point).
 • Twist copper strands of each conductor tightly together.
 • Loop conductor clockwise, 3/4 turn around terminal screw and tighten screw securely.
 • Cut off any wire strands not secure under terminal screw.
5. Push body into cover until both tabs lock in slots (*Diagram B, Fig. 5*).

CAT. NO. 48646

CAUTION: DO NOT cut or **DAMAGE** cord jacket or insulation except where indicated.
NOTE: Use with 2-wire flexible round cords 7/16" (1 cm) maximum diameter, 18-2 to 14-2 AWG.

1. Pry body out of cover (*Diagram C, Fig. 1*).
2. Feed cord through cover (*Diagram C, Fig. 2*).
3. Remove cord jacket and conductor insulation (*Diagram C, Fig. 3*).
4. **Connect conductors to terminal screws as follows (*Diagram C, Fig. 4*):**
NOTE: Back out terminal screws until they stop turning (do not force past this point).
 • Twist copper strands of each conductor tightly together.
 • Loop conductor clockwise, 3/4 turn around terminal screw and tighten screw securely.
 • Cut off any wire strands not secure under terminal screw.
5. Push body into cover until both tabs lock in slots (*Diagram C, Fig. 5*).
6. Alternately tighten clamp screws until cord is gripped securely (*Diagram C, Fig. 5*).

CAT. NO. 48648

CAUTION: DO NOT cut or **DAMAGE** cord jacket or insulation except where indicated.
NOTE: Use with 3-wire flexible round cords 7/16" (1 cm) maximum diameter, 18-3 to 16-3 AWG.

1. Pry body out of cover (*Diagram D, Fig. 1*).
2. Feed cord through cover (*Diagram D, Fig. 2*).
3. Remove cord jacket and conductor insulation (*Diagram D, Fig. 3*).
4. **Connect conductors to terminal screws as follows (*Diagram D, Fig. 4*):**
NOTE: Back out terminal screws until they stop turning (do not force past this point).
 • BLACK (Hot) wire to BRASS screw, WHITE (Neutral) wire to SILVER screw, and GREEN (Ground) wire to GREEN screw.
 • Twist copper strands of each conductor tightly together.
 • Loop conductor clockwise, 3/4 turn around terminal screw and tighten screw securely.
 • Cut off any wire strands not secure under terminal screw.
5. Push body into cover until both tabs lock in slots (*Diagram D Fig. 5*).
6. Alternately tighten clamp screws until cord is gripped securely (*Diagram D, Fig. 5*).

DIAGRAM / SCHÉMA / DIAGRAMA A - Cat. 48642

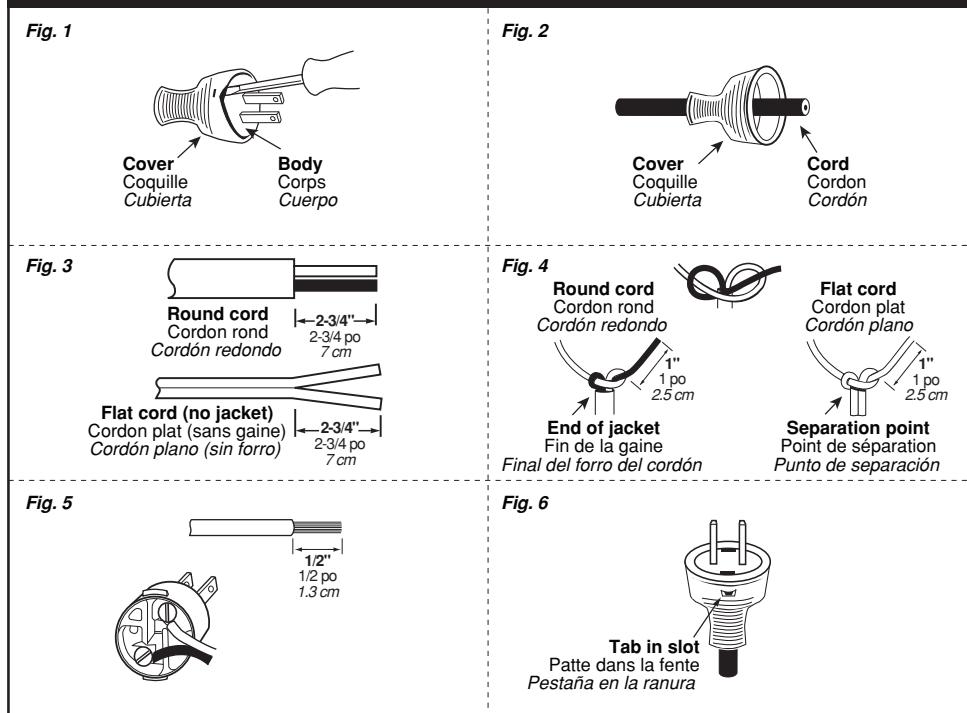


DIAGRAM / SCHÉMA / DIAGRAMA C - Cat. 48646

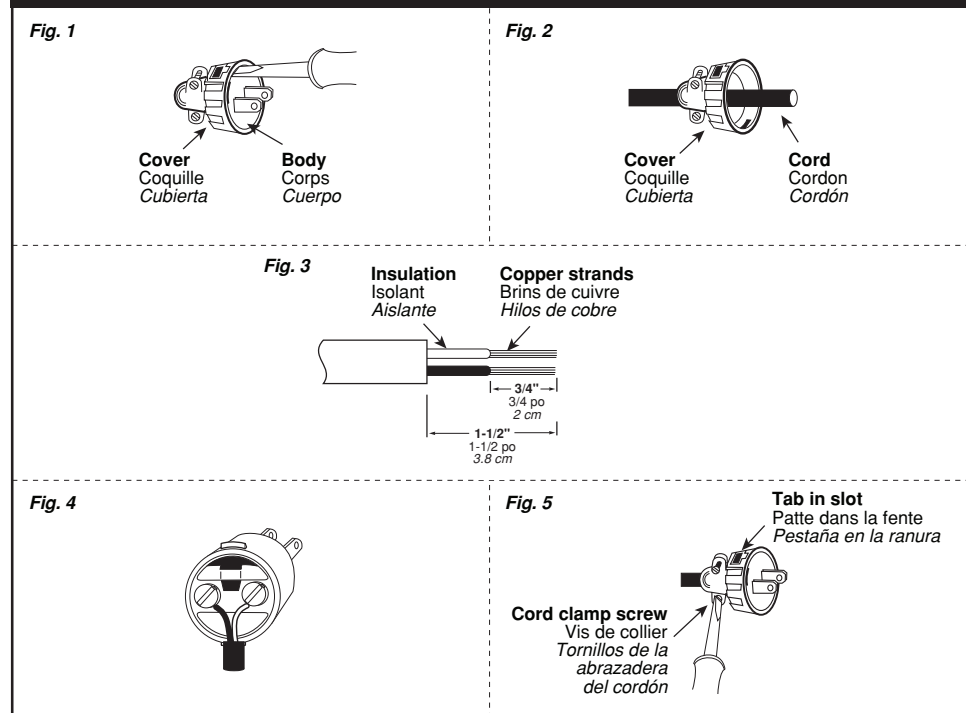


DIAGRAM / SCHÉMA / DIAGRAMA B - Cat. 48643

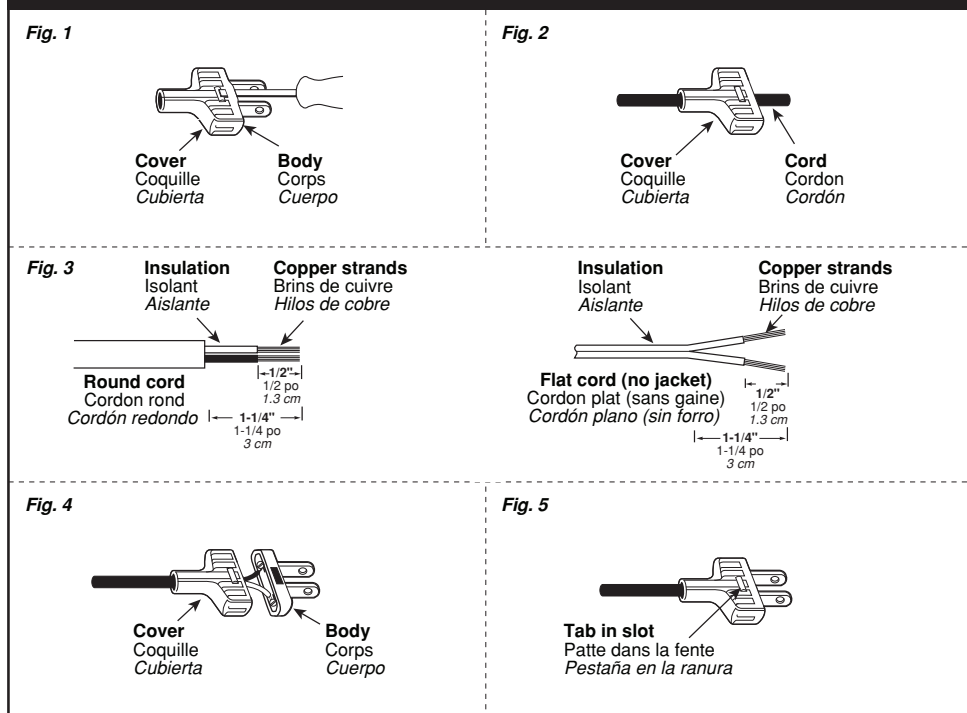
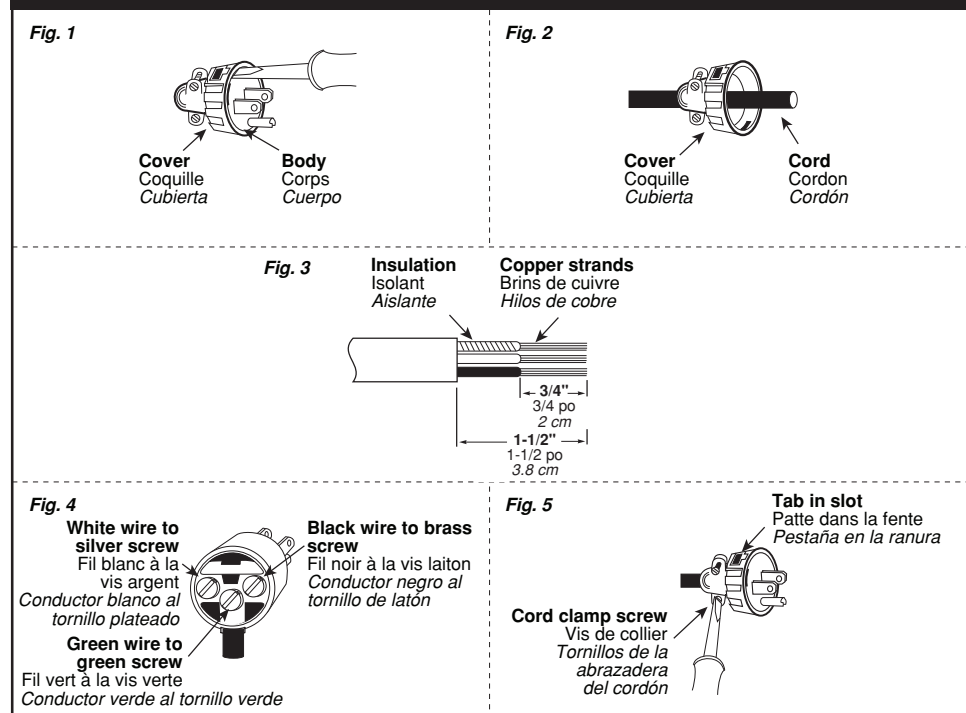


DIAGRAM / SCHÉMA / DIAGRAMA D - Cat. 48648



FOR CANADA ONLY

For warranty information and/or product returns, residents of Canada should contact Leviton in writing at Leviton Manufacturing of Canada Ltd to the attention of the Quality Assurance Department, 165 Hymus Blvd, Pointe-Claire (Quebec), Canada H9R 1E9 or by telephone at 1 800 405-5320.

LIMITED 2 YEAR WARRANTY AND EXCLUSIONS

Leviton warrants to the original consumer purchaser and not for the benefit of anyone else that this product at the time of its sale by Leviton is free of defects in materials and workmanship under normal and proper use for two years from the purchase date. Leviton's only obligation is to correct such defects by repair or replacement, at its option. For details visit www.leviton.com or call 1-800-824-3005. This warranty excludes and there is disclaimed liability for labor for removal of this product or reinstallation. This warranty is void if this product is installed improperly or in an improper environment, overloaded, misused, opened, abused, or altered in any manner, or is not used under normal operating conditions or not in accordance with any labels or instructions. **There are no other or implied warranties of any kind, including merchantability and fitness for a particular purpose, but if any implied warranty is required by the applicable jurisdiction, the duration of any such implied warranty, including merchantability and fitness for a particular purpose, is limited to two years. Leviton is not liable for incidental, indirect, special, or consequential damages, including without limitation, damage to, or loss of use of, any equipment, lost sales or profits or delay or failure to perform this warranty obligation.** The remedies provided herein are the exclusive remedies under this warranty, whether based on contract, tort or otherwise.

