

Single Pole (One location) or 3-Way (Multi-location)
Electronic Low Voltage Dimmer (Lighted)

Cat. No. VPE04-1L, 400W
Cat. No. VPE06-1L, 600W
120VAC, 60Hz

INSTALLATION INSTRUCTIONS

WARNINGS AND CAUTIONS:

- To be installed and/or used in accordance with appropriate electrical codes and regulations.
- If you are unsure about any part of these instructions, consult a qualified electrician.
- To avoid overheating and possible damage to this device and other equipment, do not install to control a receptacle, fluorescent lighting, a motor- or a transformer-operated appliance.
- Use with electronic low voltage transformers only. Do Not use to control a magnetic low voltage transformer. Use a Leviton magnetic low voltage dimmer to control magnetic low voltage transformers.
- This dimmer provides protection from overheating. An excessive load applied to the dimmer will cause the dimmer to overheat. The excess load must be removed to resume proper operation.
- Vizia +™ dimmers are not compatible with standard 3-way or 4-way switches. They must be used with compatible Vizia +™ remotes for multi-location dimming.
- Use only one (1) Vizia +™ dimmer in a multi-location circuit with up to 9 coordinating remotes (without LEDs) or up to 4 matching remotes (with LEDs). The remote(s) will turn the light on at the brightness level selected at the dimmer.

WARNINGS AND CAUTIONS:

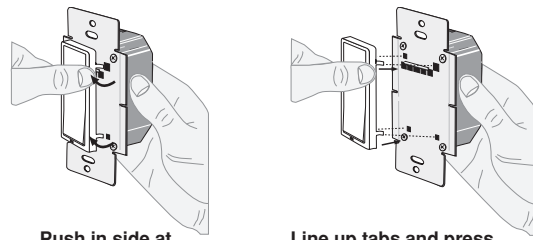
- Lighting fixture and dimmer must be grounded.
- This dimmer must be installed in a wall box with a neutral connection.
- Consult fixture manufacturer to determine if their solid state transformers can be dimmed.
- Total minimum load must exceed 40W.
- Dimmer may feel warm to the touch during normal operation.
- Recommended minimum wall box depth is 2-1/2".
- Maximum wire length from dimmer to all installed remotes cannot exceed 300 ft (90 m).
- Disconnect power at circuit breaker or fuse when servicing, installing or removing fixture.
- Use this device only with copper or copper clad wire. With aluminum wire use only devices marked CO/ALR or CU/AL.

Tools needed to install your Dimmer

- Slotted/Phillips Screwdriver
- Pliers
- Cutters
- Electrical Tape
- Pencil
- Ruler

Changing the color of your device:

Your device may include color options. To change color of the face proceed as follows:



Push in side at tab to release

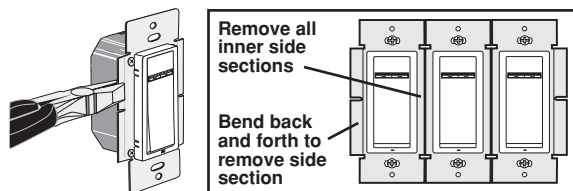
Line up tabs and press in sides one at a time to attach

Installing Dimmer by itself or with other devices

If installing Dimmer in a single device application, proceed with the **INSTALLING YOUR DIMMER** section. If installing Dimmer in a multi-device application, proceed as follows:

MULTI-DEVICE APPLICATION

In multi-device installations, the side sections of the mounting straps may require removal. Use pliers to carefully bend side sections back and forth until they break off.



Remove all inner side sections

Bend back and forth to remove side section

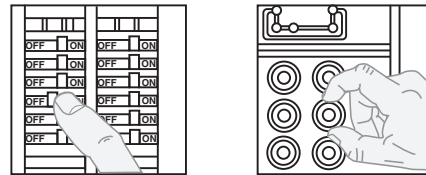
Typically, removal of the side sections in multi-dimmer installations requires a reduction of the dimmer's capacity. Refer to the chart for maximum load per dimmer.

Cat. No.	Single	Two Devices	More than 2 Devices
VPE04	400W	350W	250W
VPE06	600W	500W	400W

INSTALLING YOUR DIMMER

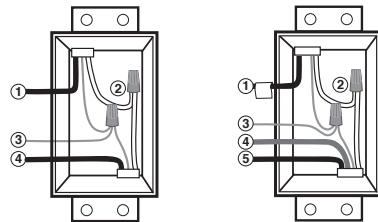
NOTE: Use check boxes when Steps are completed.

Step 1 WARNING: TO AVOID FIRE SHOCK OR DEATH; TURN OFF POWER at circuit breaker or fuse and test that power is off before wiring!



Step 2 Identifying your wiring application (most common):

NOTE: If the wiring in your wall box does not resemble any of these configurations, consult a qualified electrician.



Single Pole

- Line (Hot)
- Neutral
- Ground
- Load

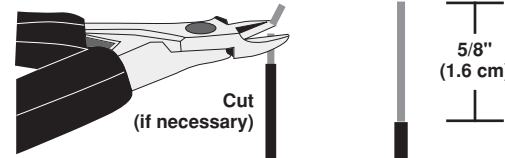
IMPORTANT : For 3-Way applications, note that one of the screw terminals from the old switch being removed will usually be a different color (Black) or labeled Common. Tag that wire with electrical tape and identify as the common (Line or Load) in both the dimmer wall box and remote wall box.

3-Way

- Line or Load (see important instruction below)
- Neutral
- Ground
- First Traveler – note color
- Second Traveler – note color. NOTE: For matching remote w/LEDs installation, the First Traveler becomes Line Hot.

Step 3 Preparing and connecting wires:

Pull off pre-cut insulation from dimmer leads. Make sure that the ends of the wires from the wall box are straight (cut if necessary). Remove insulation from each wire in the wall box as shown:



Strip Gage (measure bare wire here)

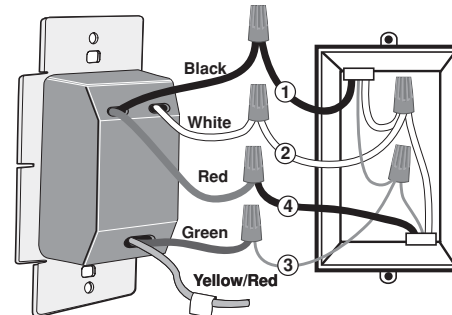
For non-standard wiring applications, refer to Wire Nut and Connector Size Chart

WIRE CONNECTOR / # OF COND. COMBINATION CHART

- 1 - #12 w/ 1 to 3 #14, #16 or #18
- 2 - #12 w/ 1 or 2 #16 or #18
- 1 - #14 w/ 1 to 4 #16 or #18
- 2 - #14 w/ 1 to 3 #16 or #18

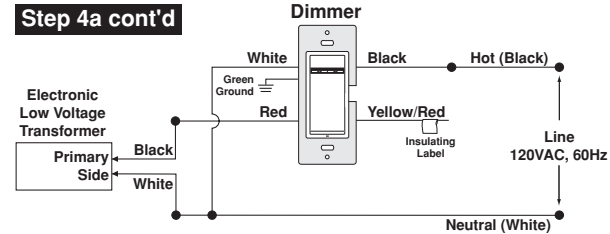
- For Single-Pole Application, go to Step 4a.
- For 3-Way Coordinating Remote (no LEDs) Application, go to Step 4b.
- For 3-Way Matching Remote (with LEDs) Application, go to Step 4c.

Step 4a Single Pole Wiring Application:



Insulating label: This wire is used in 3-way installations only. For single pole installations, do not remove this insulating label.

Step 4a cont'd



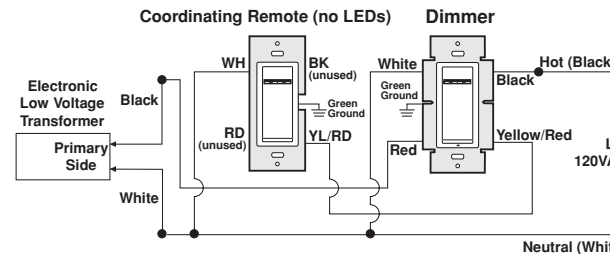
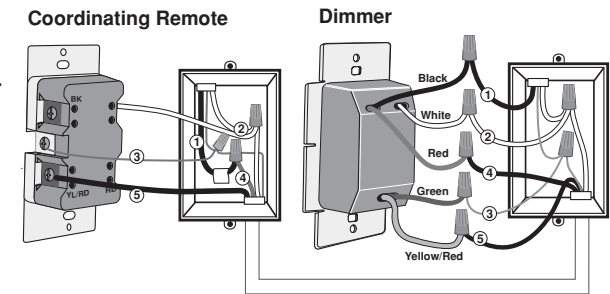
WIRING DIMMER:

Connect wires per WIRING DIAGRAM as follows:

- Green or bare copper wire in wall box to Green dimmer lead.
- Line Hot wall box wire to Black dimmer lead.
- Load wall box wire to Red dimmer lead.
- Line Neutral wall box wire to White dimmer lead.
- Yellow/Red wire should have Red insulation label affixed.

NOTE: If insulating label is not affixed to Yellow/Red dimmer lead, use electrical tape to cover.

Step 4b 3-Way Wiring with Coordinating Remote (no LEDs) Application:



Step 4b cont'd

WIRING DIMMER:

Connect wires per WIRING DIAGRAM as follows: NOTE: The dimmer must be installed in a wall box that has a Line Hot connection.

NOTE: Maximum wire length from dimmer to all installed remotes cannot exceed 300 ft (90 m).

- Green or bare copper wire in wall box to Green dimmer lead.
- Line Hot (common) wall box wire identified (tagged) when removing old switch to Black dimmer lead.
- First Traveler wall box wire to Red dimmer lead (note wire color).
- Remove Red insulating label from Yellow/Red dimmer lead.
- Second Traveler wall box wire to Yellow/Red dimmer lead (note wire color). This traveler from the dimmer must go to the terminal screw on the remote marked "YL/RD".
- Line Neutral wall box wire to White dimmer lead.

WIRING COORDINATING REMOTE:

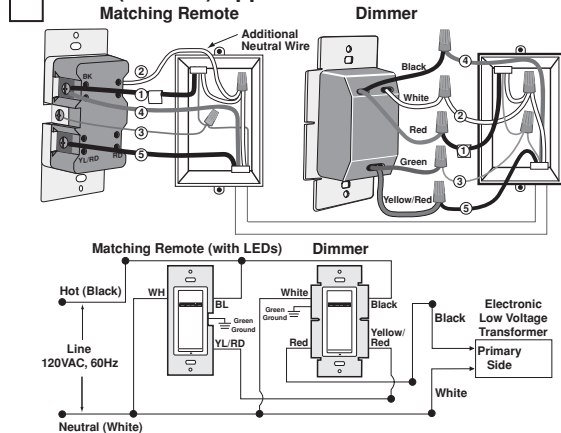
Connect wires per WIRING DIAGRAM as follows:

NOTE: "BK" and "RD" terminals on coordinating remote are unused. Tighten both screws.

NOTE: Maximum wire length from dimmer to last remote is 300 ft (90 m).

- Green or bare copper wire in wall box to Green terminal screw.
- Load wall box wire identified (tagged) when removing old switch to First Traveler (note color as above).
- Second Traveler wall box wire (note color as above) to terminal screw marked "YL/RD". This traveler from the remote must go to the Yellow/Red dimmer lead.
- Remove White insulating label from terminal screw marked "WH".
- Line Neutral wall box wire to terminal screw marked "WH".
- Proceed to Step 5.

Step 4c 3-Way Wiring with Matching Remote (w/LEDs) Application:



NOTE: The dimmer **must** be installed in a wall box that has a Load connection. The matching remote must be installed in a wall box with a Line Hot connection and a Neutral connection. A Neutral wire to the matching remote needs to be added as shown.

If you are unsure about any part of these instructions, consult a qualified electrician.

NOTE: Maximum wire length from dimmer to all installed remotes cannot exceed 300 ft (90 m).

WIRING MATCHING REMOTE (wall box with line hot connection):

Connect wires per WIRING DIAGRAM as follows:

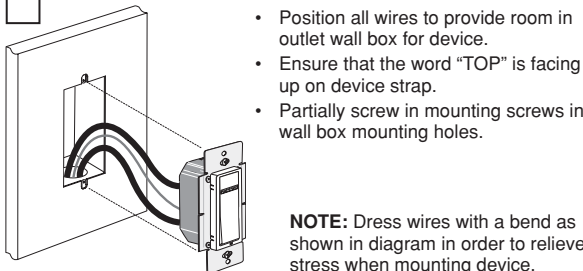
- Green or bare copper wire in wall box to Green terminal screw.
- Line Hot (common) wall box wire identified (tagged) when removing old switch and First Traveler to Remote terminal marked BK.
- Second Traveler wall box wire from dimmer to remote terminal screw marked "YL/RD" (note wire color). This traveler from the remote must go to Yellow/Red dimmer lead.
- Line Neutral wall box to remote terminal screw marked "WH".

WIRING DIMMER (wall box with load connection):

Connect wires per WIRING DIAGRAM as follows:

- Green or bare copper wire in wall box to Green dimmer lead.
- Load wall box wire identified (tagged) when removing old switch to Red dimmer lead.
- First Traveler Line Hot to Black dimmer lead.
- Remove Red insulating label from Yellow/Red dimmer lead.
- Second Traveler wall box wire (note color as above) to Yellow/Red dimmer lead. This traveler from the dimmer must go to the terminal screw on the remote marked "YL/RD".
- Line neutral wall box wire to White dimmer lead.

Step 5 Testing your Dimmer prior to mounting in wall box:



- Position all wires to provide room in outlet wall box for device.
- Ensure that the word "TOP" is facing up on device strap.
- Partially screw in mounting screws in wall box mounting holes.

NOTE: Dress wires with a bend as shown in diagram in order to relieve stress when mounting device.

Step 5 cont'd

- Restore power at circuit breaker or fuse.
- Press pad until locator light is OFF. Lights should turn ON. If lights do not turn ON, press the upper half of the DIM/BRIGHT Bar until the lights brighten.

If lights still do not turn ON, refer to the TROUBLESHOOTING section.

Step 6 Dimmer Mounting: TURN OFF POWER AT CIRCUIT BREAKER OR FUSE.



Installation may now be completed by tightening mounting screws into wall box. Attach wallplate.

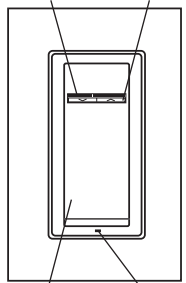
Step 7 Restore Power:

Restore power at circuit breaker or fuse. Installation is complete.

OPERATION

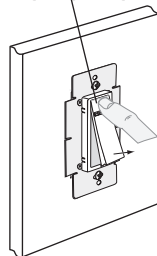
NOTE: The locator light will illuminate when the load is in the OFF position to facilitate access in the dark.

NOTE: If using the dimmer in a 3-way application, the lights will turn ON at brightness set on dimmer's DIM/BRIGHT bar. The lighting can be controlled from either the dimmer or the remote location.



LED Brightness Display
DIM/BRIGHT Bar
Push Pad
Locator Light

Gently press top of push pad



Air-Gap Switch: On the dimmer only, engage the air-gap switch by gently pressing the top of the push pad until the bottom lifts completely out of the frame and a click is heard (refer to Figure). LED's will turn OFF. This will stop power to the fixture to replace the bulb. After servicing is complete, press the push pad back into place for normal operation.

Cleaning: Clean with a damp cloth. **DO NOT** use chemical cleaners.

ADVANCED PROGRAMMING FEATURES

Definition of A Modes

- A-1) Energy Save:** Sets the maximum brightness level for energy savings.
- A-2) Minimum Brightness Level:** Sets the minimum dimming level.
- A-3) Preset ON Level:** Sets the turn on brightness level regardless of the previous set light level (formerly Dim Lock).
- A-4) Almost OFF Level:** Sets the brightness level the device will dim to when the push pad is pressed to turn off. In this mode the lights will always remain on.

Definition of B Modes

- B-1) ON Fade Rate:** Sets the amount of time in seconds it takes the lights to turn ON to maximum brightness.
- B-2) OFF Fade Rate:** Sets the amount of time in seconds it takes the lights to turn OFF from maximum brightness.
- B-3) LED Options:** Sets the time period in seconds the Locator LED and Brightness display will stay on before extinguishing.

Definition of C Modes

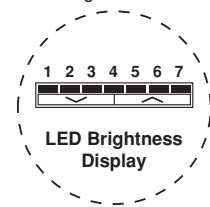
- C) Restore Defaults:** Restores the factory default settings.

Definition of LEDs

Leftmost LED = LED 1
Rightmost LED = LED 7

NOTES:

- The device will exit programming mode after 3 minutes of inactivity.
- Pressing the Push Pad at any time during programming will advance the device to the next programming mode.



Program Mode A

To enter Program Mode A:

Press and hold the Push Pad and then the **right** half of the DIM/BRIGHT Bar (∧) for 5 seconds until the Locator LED and leftmost LED (LED 1) begin to blink.

- A-1)** Upon releasing the Push Pad and the **right** half of the DIM/BRIGHT Bar (∧), the Locator LED will continue to blink once per second and the rightmost LED will illuminate to display the device is in Program Mode **A-1, Energy Save**. The default energy save mode is 100% i.e. full bright. To change the **Energy Save** level, use the DIM/BRIGHT Bar to move the corresponding LED to the desired discrete preset level according to **Chart A**. By tapping the Push Pad this setting will automatically be saved and the device will advance to the next programming mode, **A-2**.

Chart A

LED	MAX. BRIGHTNESS	ENERGY SAVINGS
LED 1	75%	34% savings
LED 2	80%	29% savings
LED 3	85%	24% savings
LED 4	90%	16% savings
LED 5	95%	8% savings
LED 6	97%	5% savings
LED 7 (Default)	100% (Full Bright)	0% savings

- A-2)** The Locator LED will blink 2 times per second to indicate the device is in Program Mode **A-2, Minimum Brightness Level**. The default Minimum Brightness Level is LED 2. To change the **Minimum Brightness Level** from 1-50%, use the DIM/BRIGHT Bar. The light output will reflect the minimum brightness level selected. By tapping the Push Pad this setting will automatically be saved and the device will advance to the next programming mode, **A-3**.

- A-3)** The Locator LED will blink 3 times per second to indicate Program Mode **A-3, Preset ON Level**. To change the current **Preset ON Level** from 1-100%, use the DIM/BRIGHT Bar. If this feature is not desired, press and hold the **left** half of the DIM/BRIGHT Bar (∨) until no LED is lit (default setting). By tapping the Push Pad this setting will automatically be saved and the device will advance to the next programming mode, **A-4**.

- A-4)** The Locator LED will blink 4 times per second to indicate Program Mode **A-4, Almost OFF Level**. To change the current **Almost OFF Level**, use the DIM/BRIGHT Bar to adjust the preset light level. If this feature is not desired, press and hold the **right** half of the DIM/BRIGHT Bar (∧) until no LED is lit (default setting). **Almost OFF** can be overridden by pressing and holding the **left** half of the DIM/BRIGHT Bar (∨). By tapping the Push Pad this setting will automatically be saved and the device will exit Programming Mode A.

NOTE: When **Almost OFF Level** is set the LED Locator will be illuminated when the dimmer is in the **Almost OFF** state, even though the light remains on.

Program Mode B

To enter Program Mode B:

Press and hold the Push Pad and then the **left** half of the DIM/BRIGHT Bar (∨) for 5 seconds until the Locator LED and rightmost LED (LED 7) begins to blink.

- B-1)** Upon releasing the Push Pad and the **left** half of the DIM/BRIGHT Bar (∨), the Locator LED will continue to blink once per second indicating he dimmer is in Program Mode **B-1, ON Fade Rate**. To change the **ON Fade Rate**, use the DIM/BRIGHT Bar to move the LED to the desired preset level according to **Chart B**. By tapping the Push Pad this setting will automatically be saved and the device will advance to the next programming mode, **B-2**.

- B-2)** The Locator LED will blink 2 times per second to indicate Program Mode **B-2, OFF Fade Rate**. To change the **OFF Fade Rate**, use the DIM/BRIGHT Bar to move the LED to the desired preset level according to **Chart B**. By tapping the Push Pad this setting will automatically be saved and the device will advance to the next programming mode, **B-3**.

Chart B

LED	FADE ON	FADE OFF
LED 1	0 seconds (instant)	0 seconds (instant)
LED 2 (Default)	0.5 seconds	0.5 seconds
LED 3	1.5 seconds	1.5 seconds
LED 4	3.0 seconds	3.0 seconds
LED 5	6.0 seconds	6.0 seconds
LED 6	10 seconds	10 seconds
LED 7	25 seconds	25 seconds

- B-3)** The Locator LED will blink 3 times per second to indicate Program Mode **B-3, LED Options**. To change the **LED Options** settings, use the DIM/BRIGHT Bar to move the LED to the desired preset setting according to **Chart B-3**. By tapping the Push Pad this setting will automatically be saved and the device will exit Programming Mode B.

Chart B-3

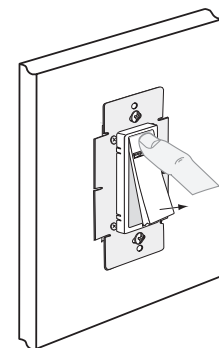
LED	LOCATOR LED TIMEOUT	LED BRIGHTNESS DISPLAY OPTIONS
LED 1	Active	Active
LED 2	Active	Turns off 5 sec. after use
LED 3	Turns off 5 sec. after use	Active
LED 4	Turns off 5 sec. after use	Turns off 5 sec. after use
LED 5	N/A	N/A
LED 6	N/A	N/A
LED 7	N/A	N/A

Program Mode C

To enter Program Mode C:

Engage the air-gap switch by gently pressing the top of the Push Pad until the bottom lifts completely out of the frame and a click is heard. All LEDs will extinguish.

- C)** Press Push Pad back into the frame and hold for 7 seconds until the LED Brightness Display starts bidirectional strobing to indicate Program Mode **C, Restore Default**. To **Restore Default** settings, release the Push Pad. This will exit programming mode C.



TROUBLESHOOTING

- **Lights Flickering**
 - Lamp has a bad connection.
 - Wires not secured firmly with wire connectors of dimmer or terminal screws of remote.
 - Verify load type is electronic low voltage.
- **Light does not turn ON and Locator LED does not turn ON**
 - Circuit breaker or fuse has tripped.
 - Lamp is burned out.
 - Neutral not wired to Dimmer (White wire).
- **Intermittent dimmer operation**
 - Minimum load is under 40W.
- **Remote does not operate lights**
 - Ensure that total wire length does not exceed 300 ft (90 m).
 - Ensure wiring is correct.
- **Lights cycle ON and OFF**
 - Remove excess load.

For additional information, contact Leviton's Techline at 1-800-824-3005 or visit Leviton's website at www.leviton.com

Covered by one or more US & Foreign Patents and patents pending
Copyright© 2007 Leviton Manufacturing Co., Inc.
All Rights Including Trade Dress Rights Reserved

FCC COMPLIANCE STATEMENT

This equipment has been tested and found to comply with the limits for a Class B Digital Device, pursuant to Part 15 of the FCC Rules. These limits are designed to provide reasonable protection against harmful interference in a residential installation. This equipment generates, uses, and can radiate radio frequency energy and, if not installed and used in accordance with the instructions, may cause harmful interference to radio communications. However, there is no guarantee that interference will not occur in a particular installation. If this equipment does cause harmful interference to radio or television reception, which can be determined by turning the equipment OFF and ON, the user is encouraged to try to correct the interference by one or more of the following measures:

- Reorient or relocate the receiving Antenna.
- Increase the separation between the equipment and the receiver.
- Connect the equipment into an outlet on a circuit different from that to which the receiver is connected.
- Consult the dealer or an experienced radio/tv technician for help.

PK-93462-10-00-2A-X1

LIMITED 5 YEAR WARRANTY AND EXCLUSIONS

Leviton warrants to the original consumer purchaser and not for the benefit of anyone else that this product at the time of its sale by Leviton is free of defects in materials and workmanship under normal and proper use for five years from the purchase date. Leviton's only obligation is to correct such defects by repair or replacement, at its option, if within such five year period the product is returned prepaid, with proof of purchase date, and a description of the problem to **Leviton Manufacturing Co., Inc., Att: Quality Assurance Department, 59-25 Little Neck Parkway, Little Neck, New York 11362-2591**. This warranty excludes and there is disclaimed liability for labor for removal of this product or reinstallation. This warranty is void if this product is installed improperly or in an improper environment, overloaded, misused, opened, abused, or altered in any manner, or is not used under normal operating conditions or not in accordance with any labels or instructions. **There are no other or implied warranties of any kind, including merchantability and fitness for a particular purpose, but if any implied warranty is required by the applicable jurisdiction, the duration of any such implied warranty, including merchantability and fitness for a particular purpose, is limited to five years. Leviton is not liable for incidental, indirect, special, or consequential damages, including without limitation, damage to, or loss of use of, any equipment, lost sales or profits or delay or failure to perform this warranty obligation.** The remedies provided herein are the exclusive remedies under this warranty, whether based on contract, tort or otherwise.