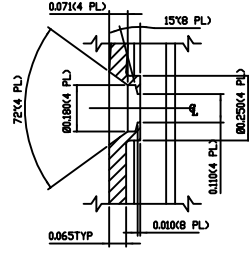
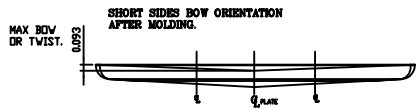
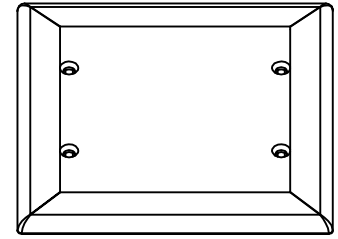


BA43012_D01
REV. A.03

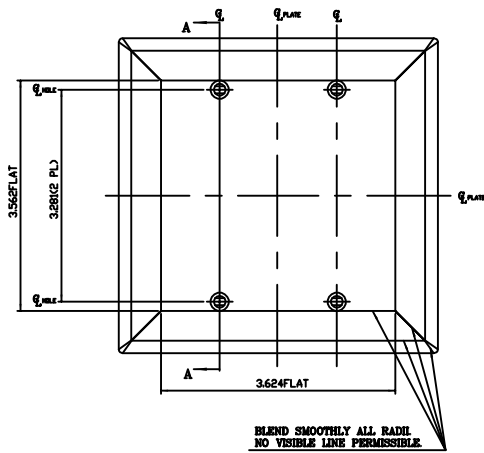
DIMENSIONAL TOLERANCES UNLESS OTHERWISE SPECIFIED				
SIZE	FINISH	ASSEMBLY	ASSEMBLY	FINISH
30-2.50		30-2.50	30-2.50	30-2.50



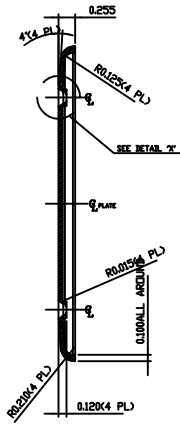
PART DETAIL X
(SCALE 4=1)



ISOMETRIC VIEWS ARE FOR REFERENCE ONLY



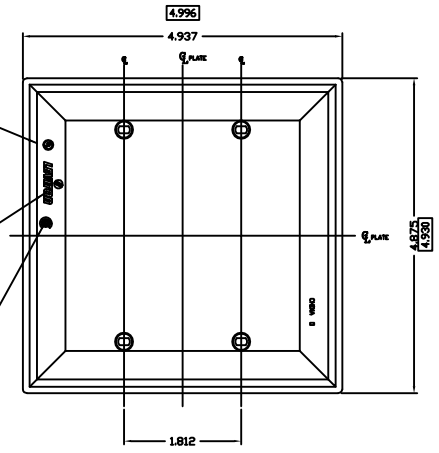
BLEND SMOOTHLY ALL RADII
NO VISIBLE LINE PERMISSIBLE



SECTION A-A



LONG SIDES BOW ORIENTATION AFTER MOLDING.
0.093 MAX BOW OR TWIST.



- <A.03>
"UL" LOGO
RAISED 0.005-0.007
0.156 DIA.
LOCATION OPTIONAL
- "LEVITON" LOGO
RAISED 0.005-0.007
0.125 LETTERS.
LOCATION OPTIONAL
- "CSA" LOGO
RAISED 0.005-0.007
0.187 DIA.
LOCATION OPTIONAL

NOTES:

- RADII NOT INDICATED ARE 0.031 R.
- DRAFT ANGLE OF 1/2" ALLOWED, UNLESS OTHERWISE SPECIFIED. DRAFT TO BE IN A DIRECTION TO PRODUCE MIN. MATERIAL ON PART. MAX. MATERIAL ON MOLD.
- SURFACE FINISH TO BE SPI-SPE # 2
- PART TO BE FREE OF MOLD FLASH
- NO SINK OR KNIT LINES PERMITTED.
- CONCEALED DIMENSIONS SHOWN BOXED-IN FOR QA REFUSE ONLY.

REV	DATE	BY	CHK'D	APP'D
A.03	04/01/25	ECO	#1008019	WYV JH
A.02	08/07/20	ECO	#7080048	YL WHT
A.01	01-31-18	ADD: CHINA	LD	PL
A.00	01-08-18	NEW RELEASE	ALFREDO	LSL

The information on this document is the property of Leviton Manufacturing Company, Inc. It is intended only for the individual customer or user. It is not to be distributed, copied, or used for any other purpose without the written permission of Leviton Manufacturing Company, Inc. All rights reserved.

LEVITON MANUFACTURING COMPANY
TWO GANG BLANK BOX MNTD.
MID-WAY NYLON WALLPLATE

DATE: 04-01-25 | DRAW: 001100 | SCALE: 1 = 1 | D: REE
CHECKED: LSL 04-13-24 | APP'D: LSL 04-17-25

ENG REV. A.03