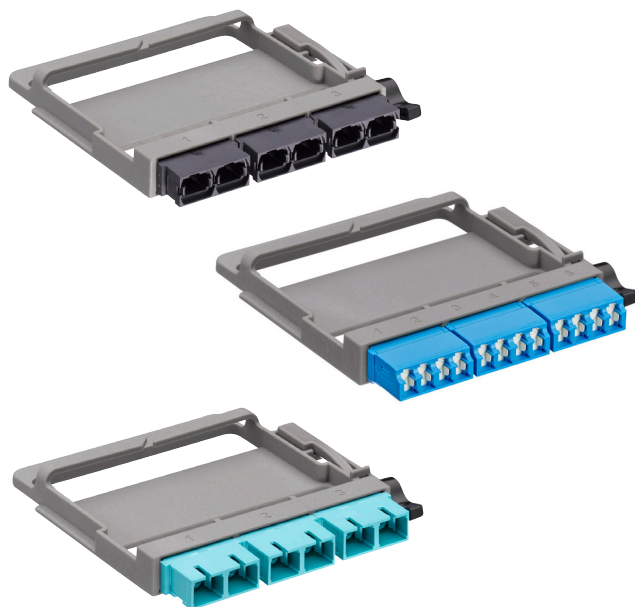


HDX Fiber Adapter Plates

APPLICATION

Leviton HDX Fiber Adapter Plates are used in conjunction with OPT-X™ UHDX and HDX Enclosures and Panels, or the HDX Fiber Distribution Frame to provide a means to connect backbone-to-backbone or backbone-to-horizontal fiber cabling. The fiber adapter plates are offered in LC, SC, and MTP® versions.



SPECIFICATION

Adapter plates shall be modular and functional for use in OPT-X UHDX and HDX Enclosures and Panels, and the HDX Fiber Distribution Frame. Adapter plates shall be offered in LC, SC, and MTP styles in all fiber types. Plates shall allow for 12 fibers when using LC connectors and 6 fibers when using SC connectors. Plates shall allow for BASE8, BASE12, BASE16 and BASE24 MTP connectors. Adapter plates shall be compliant to ANSI/TIA-568.3-E (for performance) and respective ANSI/TIA-604-X (for intermateability) standards. LC adapters shall provide for IP5x-rated internal shutters that open and close automatically with the insertion and removal of an LC connector.

COUNTRY OF ORIGIN

LC - USA

SC and MTP - Contact Customer Service

WARRANTY INFORMATION

For Leviton product warranties, go to leviton.com/ns/warranty

FEATURES

- Adapter plates offered in LC, SC, MTP, and blank styles
- Offered in OM3/4, OM5 and OS2 fiber types
- Easy one-hand installation and removal
- Includes retaining flanges for routing and protection of fibers
- Patented internal shutters on LC adapters eliminate the need for dust plugs to reduce waste, speed deployment and ensure safer installation
- Shuttered LC adapter door will illuminate when a VFL is used for fiber traceability
- Shuttered LC adapter is IP5x rated for limited protection against dust ingress

DESIGN CONSIDERATIONS

- Fits in OPT-X UHDX and HDX enclosures and panels
- Fits in HDX Fiber Distribution Frame Patching Decks
- Adapter plates can be staged within a panel or enclosure to allow for future growth
- Visible sequential numbering to identify ports (for Tx and Rx)
- Zirconia ceramic sleeve used in laser-optimized multimode, SWDM multimode, and single-mode applications (OM3, OM4, OM5, OS2)
- Blank adapter plates available to block unused openings
- Recommend use of Leviton Premium Plus Duplex LC Patch Cord for smallest outside cable jacket diameter
- MTP key up to key down for single-mode applications and multimode APC using 16-fiber and 8-fiber MTP

STANDARDS & REGULATIONS

- ANSI/TIA-568.3-E for performance requirements
- ANSI/TIA-604-5 (MTP), -3B (SC), -10B (LC) for connector intermateability
- IEC 60529 IP5x dust protection (LC)

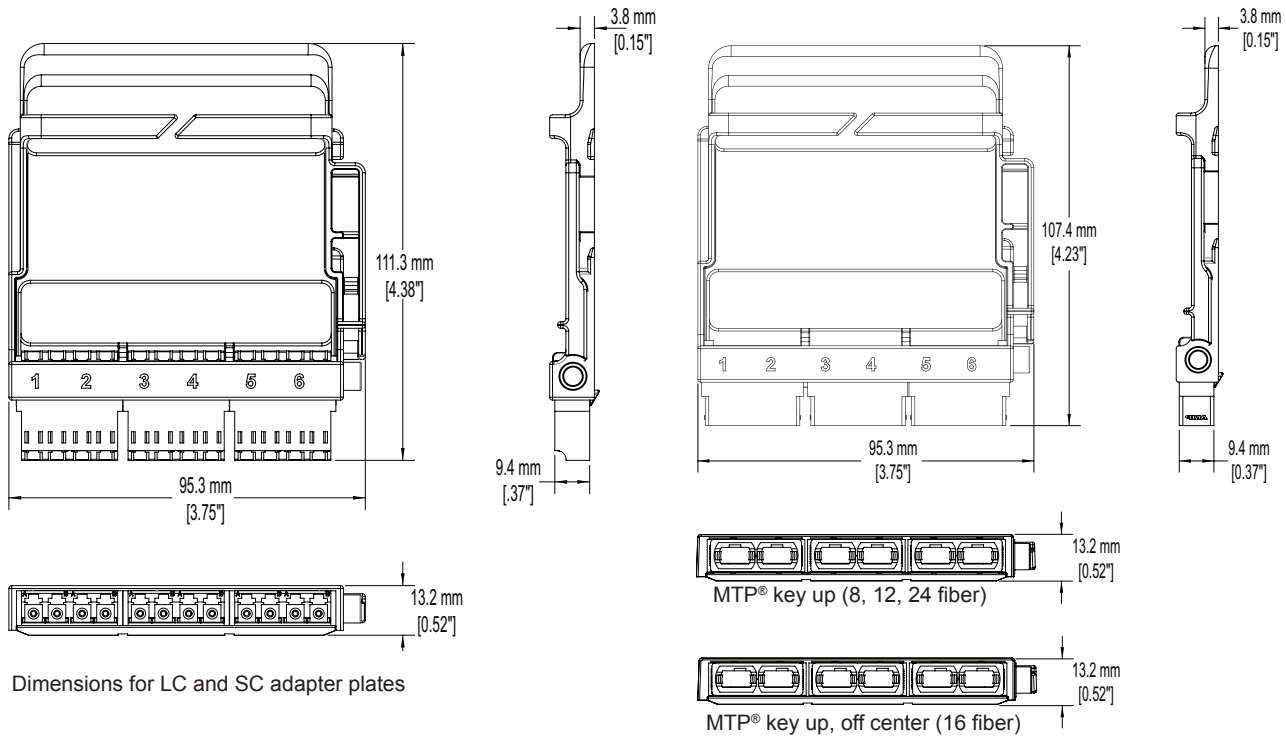
MECHANICAL SPECIFICATIONS

Dimensions: See page two

Materials: Plate: gray polycarbonate

PRODUCT SPECIFICATIONS
5FUHD-xxx

5FUHD-xxx



Dimensions for LC and SC adapter plates

HDX FIBER ADAPTER PLATES

Description	Part No.
12 fibers OM3 & OM4, Quad LC shuttered (aqua), zirconia ceramic sleeve	5FUHD-SQL
12 fibers OM4, Quad LC shuttered (heather violet), zirconia ceramic sleeve	5FUHD-SML
12 fibers OM5, Quad LC shuttered (lime green), zirconia ceramic sleeve	5FUHD-S5L
12 fibers OS2, Quad LC shuttered (blue), zirconia ceramic sleeve	5FUHD-SLL
6 fibers OM3 & OM4, Duplex SC (aqua), zirconia ceramic sleeve	5FUHD-6QC
6 fibers OS2, Duplex SC (blue), zirconia ceramic sleeve	5FUHD-6LC
3 Duplex Base8/12/24 MTP® Adapters (black), keyed up to keyed up	5FUHD-6MB
3 Duplex Base8/12/24 MTP Adapters (black), keyed up to keyed down	5FUHD-6MP
3 Duplex Base16 MTP16 Adapters (green), keyed up to keyed down	5FUHD-66P
HDX Plate Blank	5FUHD-BLK

ADAPTER COLORS

	OM3/OM4	OM5	OS2
LC	Aqua	Lime Green	Blue
SC	Aqua	NA	Blue
Base8/12/24 MTP	Black	NA	Black
Base16 MTP	Green	NA	Green

For further support information, visit leviton.com/ns/support