

SYSTEM DATA SHEET — EUROPE

EXTREME™ Cat 6 UTP System

Standard Cat 6 solution features EXTREME Cat 6 jacks and offers solid performance and value

- Exceeds ISO/IEC 11801-1 Class E and ANSI/TIA-568.2-D Cat 6 requirements for cabling systems performance to support IEEE 1000BASE-T networks
- Third-party tested
- Error-free performance up to 1 Gigabit Ethernet with full duplex transmission
- Cost-effective standard Cat 6 solution
- Meets PoE standards up to 100 watts

*SYSTEM PERFORMANCE PARAMETERS

EXTREME Cat 6 Unshielded SYSTEM CHANNEL TYPICAL MARGINS*								
	Insertion Loss	NEXT	PSNEXT	ACR-F (ELFEXT)	PSACR-F (PSELFEXT)	Return Loss	ACR-N	PSACR-N
Standard (250MHz)	36.0 dB	33.1 dB	30.2 dB	15.3 dB	12.3 dB	8.0 dB	2.9 dB	5.8 dB
Regional Guaranteed Margins** for Europe	3%	2 dB	2 dB	3 dB	4 dB	2 dB	3 dB	3 dB
Typical Performance Margin	5.5%	9.0 dB	10.0 dB	10.0 dB	11.0 dB	5.0 dB	10.0 dB	10.0 dB

*All parameters comply with ISO/IEC 11801-1 Class E requirements across the entire frequency range. System performance is representative of the specific components and topologies as listed on this system data sheet. Typical performance values are based on third-party lab verified testing, in-house testing and field test data. Field installed channel performance may vary based on the channel topology, installation practices, installation environment and accuracy of the handheld tester. Only Leviton approved testers may be used. All stated performance specifications are subject to the terms and conditions of the manufacturers warranties. Details at www.leviton.com.

** Values represent guaranteed margins to ANSI/TIA-568.2-D standard at 20°C ambient temperature. All parameters comply with ANSI/TIA-568.2-D Cat 6 and ISO/IEC 11801-1 Class E requirements across the entire frequency range. All values represent worst-case margins for 17 to 100 meter channel configurations (or 17 to 93 meters when using 28 AWG (6H460) patch cords). System performance margin guarantees are representative of the specific components and topologies as listed in this document. Contact your Leviton technical representative for more information on alternative components and channel configurations. Details at Leviton.com/NS/Warranty. Guaranteed System Performance applies exclusively when the system is installed and tested by Leviton Network Solutions Certified Installers. Guaranteed margin values apply at the time of installation.

RECOMMENDED FOR

1000BASE-T network applications

Applications requiring compact, high-density design and reduced cable outer diameter

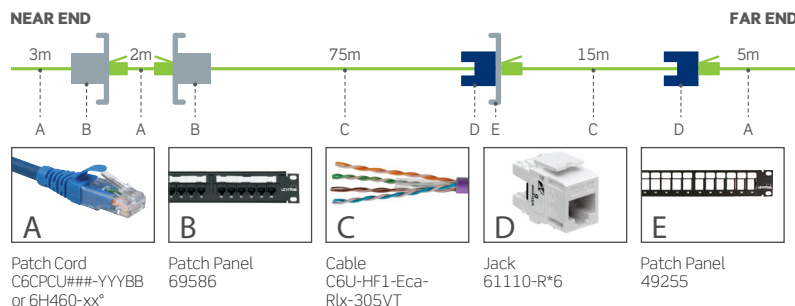
Network applications in financial, health care, government, transportation, and education environments

Networks with high bandwidth utilization requirements

Applications requiring PoE support up to 100 watts

AV systems for high-end conference rooms and classrooms

SYSTEM TOPOLOGY



A Patch Cord C6CPCU###-YYYBB or 6H460-xx*

B Patch Panel 69586

C Cable C6U-HF1-Eca-Rlx-305VT

D Jack 61110-R*6

E Patch Panel 49255

YYY = Color: Gray (888), Red (111), Blue (444), Green (555), Yellow (666)

CAT 6 EXTREME



JACKS

EXTREME™ CAT 6 COMPONENT-RATED QUICKPORT™ JACKS

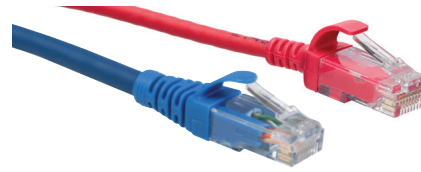
- Third-party tested and verified to exceed performance requirements
- Tested and approved for use in air-handling spaces (plenum rating) in accordance with UL Standard 2043
- Patented Retention Force Technology protects against time damage and maintains contact force between plug and jack, preventing arcing from intermittent disconnects in PoE applications
- Circuit board technology for exceptional high-frequency operation
- Gas-tight insulation displacement contacts provide excellent conductor retention and resistance to surface-contact oxidation for life of the system
- Pair Separation Tower design facilitates separation of conductors and minimizes untwisting
- Patented dual-layer wiring label simplifies punchdown and reduces rework
- 90 or 180 degree bi-directional entry eases cable bend radius in back boxes
- Supports Power over Ethernet (PoE) — see individual product specifications sheets for full capabilities
- QUICKPORT jacks are compatible with all Leviton modular panels, wallplates, and surface-mount boxes



PATCH PANELS

EXTREME CAT 6 110-STYLE AND QUICKPORT PATCH PANELS

- 110-style patch panels exceed requirements for Category 6 described in ANSI/TIA-568.2-D and Class E requirements described in ISO/IEC 11801-1
- Third-party tested and verified to exceed performance requirements
- Available in flat and angled configurations
- Gas-tight insulation displacement contacts provide excellent conductor retention and resistance to surface-contact oxidation for life of the system
- Universal T568A and T568B wiring cards for 110-style IDC terminations
- QUICKPORT available in flat, angled, and zero-RU configurations
- Angled configurations allow for cords to easily route directly into vertical managers
- Select panels available in white powder coat finish
- Available in a front loading UTP QUICKPORT configuration that supports jack installation from the front or rear of the panel



PATCH CORDS

CAT 6 UNSHIELDED PATCH CORDS

- Low profile boots for higher density blade connectivity
- 24-gauge stranded conductors for enhanced flexibility and extended flex life
- Nominal outer diameter of 5.8 mm (0.228") to reduce cable pathways in racks and cabinets
- Available in five stocked colors and stocked lengths of 1, 1.5, 2, 3, and 5 meters
- Additional non-stocked lengths are available
- LSHF/LSZH materials as standard

EXTREME CAT 6 HIGH-FLEX UTP PATCH CORDS

- Bend radius is a narrow 15.2 mm (0.60"), versus 25.4 mm (1.0") for typical Cat 6 patch cords
- 28-gauge stranded conductors for maximum flexibility
- Snagless plug design with integrated strain-relief boot
- Dual-rated cable jacket (CM/LSHF/LSZH)
- Tested and verified to meet ANSI/TIA-568.2-D component requirements
- Supports Power over Ethernet (PoE) — see specification sheet for full PoE capabilities
- Additional non-stocked lengths are available



CABLE

CAT 6 UNSHIELDED CABLE, LSHF/LSZH

- 23-gauge solid annealed copper wire
- 4 unshielded twisted pairs cabled together, with central separator for increased internal crosstalk performance
- Available in a range of sheath materials to suit a variety of installation environments, including CPR fire performance ratings Eca, Dca, Cca, and B2ca, and color coded for identification
- Designed and constructed to give optimal electrical performance to the following standards:
 - ISO/IEC 11801-1 Class E, IEC 61156-5
 - EN 50173-1 and EN 50288-6-1
 - ANSI/TIA-568.2-D
- Supports Gigabit Ethernet

PART NUMBERS - COMMON PART NUMBERS SHOWN. MANY ADDITIONAL COLORS, LENGTHS, CPR EUROCLASS RATINGS, AND OTHER OPTIONS AVAILABLE ONLINE.

JACKS					
EXTREME Cat 6 Component-Rated QuickPort Jack					61110-R*6
PATCH PANELS		1RU 24-PORT	1RU 48-PORT	2RU 48-PORT	
Cat 6 Flat 110-Style Patch Panel		69586-B24			
Cat 6 Angled 110-Style Patch Panel		69587-U24		69587-U48	
Flat QuickPort Patch Panel+		49255-H24	49255-Q48	49255-H48	
Angled QuickPort Patch Panel+		49256-H24	49256-D48	49256-H48	
PATCH CORDS	GRAY	RED	BLUE	GREEN	YELLOW
Cat 6 Unshielded Patch Cord, LSHF/LSZH	C6CPCU###-888BB	C6CPCU###-111BB	C6CPCU###-444BB	C6CPCU###-555BB	C6CPCU###-666BB
Cat 6 UTP Patch Cord, 28 gauge, CM/LSHF/LSZH+	6H460-xxS	6H460-xxR	6H460-xxL	6H460-xxG	6H460-xxY
CABLE					VIOLET
Cat 6 Cable, LSHF/LSZH (Dca, Cca and B2ca versions of the cable are also available. Please contact your local Leviton representative for further information.)					C6U-HF1-Eca-Rlx-305VT

* = Color: White (W), Lt. Almond (T), Ivory (I), Yellow (Y), Orange (O), Crimson (C), Dark Red (R), Purple (P), Blue (L), Green (V), Gray (G), Black (E), Brown (B)

+ = Sold empty, load with 61110 jacks ### = Length: 1 (010), 1.5 (015), 2 (020), 3 (030), 5 (050) meters

xx = Length 03 ft (0.9 m), 05 ft (1.5 m), 07 ft (2 m), 10 ft (3 m), 15 ft (4.5 m) and 17 ft (5.1 m)

‡ = Also available from stock in Black and White