



# Evr-Green DC

Level 3 Charging Station for Public Use

SMART DC FAST CHARGING

The Evr-Green DC charging station is designed to meet the fast charging needs of today's and tomorrow's electric vehicles.

## High Power in a Small Footprint

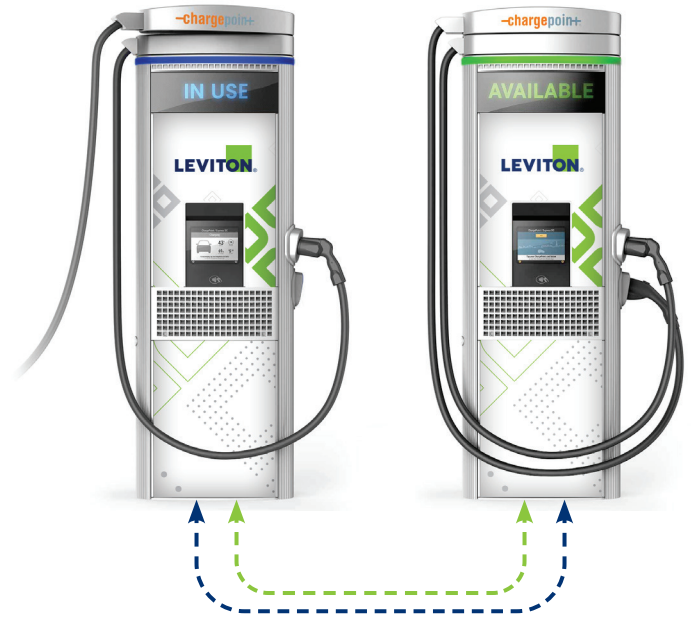
The Evr-Green DC charging station is based on industry-leading DC fast charging technology, engineered to fast charge current and next-generation electric cars, buses and trucks. At the heart of each Evr-Green DC are 2 self-contained, easily swappable AC to DC Power Modules. This innovative design ensures that in the rare instance one module goes down, the station remains operational. It can be installed as a standalone station or in a paired configuration providing up to 25% more power than a 50kW station and 40% more with a paired configuration. When paired, smart power sharing and power allocation policies determine how much energy is allotted to each station in order to deliver flexible fast charging to two vehicles at a time.

## Thoughtfully Designed

The Evr-Green DC's interactive LCD screen lets drivers easily interact with instructions, information or promotions. A wide-format LED display makes availability and status easy to see, even at a distance. An advanced cable management system provides extra reach, while keeping cables off the ground. Fault-tolerant design, remote monitoring and intelligent diagnostics provide proactive alerts to prevent station outages, eliminating driver frustration.

## Smart & Fully Supported

Built-in cellular networking makes remote management of the Evr-Green DC easy. ChargePoint Cloud Services lets station owners customize the stations to meet their specific requirements, including setting pricing policies for public charging or making stations available to certain driver groups such as employees only. Automatic software upgrades ensure the latest features are always available. The ChargePoint mobile app and in-dash systems tie everything together: drivers can locate stations, instantly begin charging, check their charging status, track their charging activity over time and, depending on the configuration, get in line to charge at busy stations.



--- Sharing Power  
--- Communication

Connectivity and more power  
in paired configuration

## High Availability and Serviceability

The Evr-Green DC has minimal moving parts, increasing reliability and minimizing ongoing maintenance. Modular components can be installed in the field without any specialized tools or expertise.

- Instrumentation for remote monitoring, intelligent diagnostics and machine learning
- Configurable levels of Power Module redundancy and duty cycle management

## Universal Compatibility

The Evr-Green DC supports battery packs from 200V to 1000V, ensuring both legacy and future electric vehicles can always be charged.

- Compatible with international electrical grid standards and vehicles
- Supports current and future standards, including: CCS1 and CHAdeMO



CCS1



CHAdeMO

**Each Evr-Green DC includes 1 CHAdeMO and 1 CCS1 port.**

Note: only one can be used at a time.

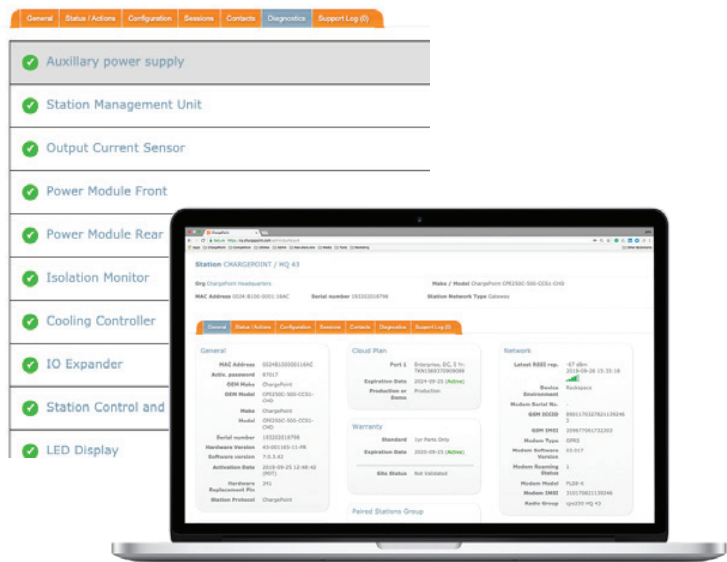


## Cloud-Based Station Management



The Evr-Green DC charger lets station owners easily monitor the stations remotely, tailor pricing to different driver groups and configure power to manage electrical costs or meet sitespecific power requirements. Automatic software updates instantly provide the latest features and enhancements to both drivers and station owners.

- 24/7 station monitoring
- Multiple authentication and/or payment methods



## Cloud management and monitoring

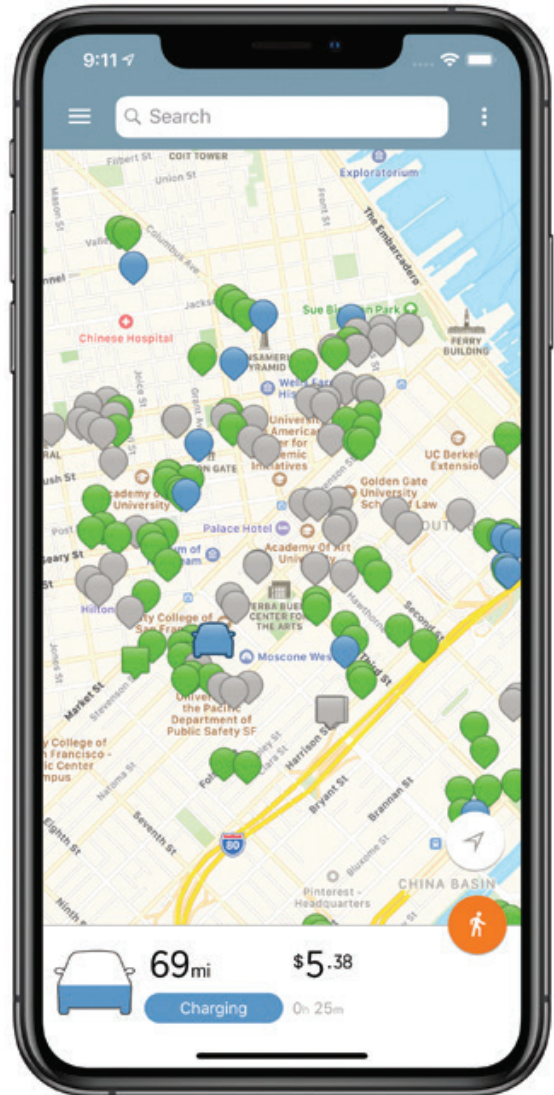
## When Charging is Mission Critical, Protect Your Investment with ChargePoint® Assure™



ChargePoint® Assure™ provides the most comprehensive EV station maintenance and management in the industry. The cost for parts and on-site labor to install is covered for all Assure eligible repairs, eliminating unexpected future expenses. Please visit [leviton.com/evrgreen](http://leviton.com/evrgreen) for more details.

## Mobile App and In-Dash Integration

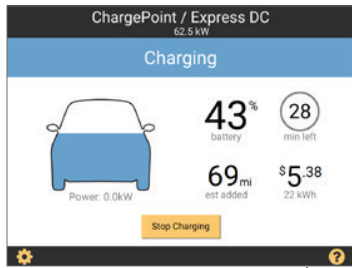
The Evr-Green DC charger is integrated with the ChargePoint mobile app and vehicle in-dash systems to provide drivers with realtime availability of stations on the network, which also lets them “get in line” to use busy charging spots.



Note: The **Enterprise Cloud (Network) Service Plan** is available for the CPDCF, and includes BOTH the above Cloud and Assure Plans.

# Evr-Green DC Station Benefits

Cable management keeps cables off the ground and makes it easy to reach charging port in any location



Touch sensitive LCD display shows charging information and can be used in any season

LED ring and large LED display allows drivers to easily see availability of the station at a distance

Two connector types assure any DC capable vehicle can be charged



Capacity to store two power modules (see Power Module Benefits below)

## Power Module Benefits

Self-contained AC to DC power conversion system allows for smaller installation footprint



Sealed units are easily field installed in Evr-Green DC stations

High-efficiency power conversion (> 95%) reduces electricity costs and wasted energy

Visit our Website at:  
[www.leviton.com/evrgreen](http://www.leviton.com/evrgreen)  
 email: [commercial@leviton.com](mailto:commercial@leviton.com)

Q-1444

Leviton Manufacturing Co., Inc.  
 201 N Service Rd, Melville, NY 11747  
 Telephone: 1-800-323-8920 • FAX: 1-800-832-9538  
 Tech Line: 1-800-824-3005 (M-F 8AM-10PM; Sat 9AM-7PM; Sun 9AM-5PM)

© 2022 Leviton Manufacturing Co., Inc. All rights reserved.

031622

