

4

3

2

1

D

D

C

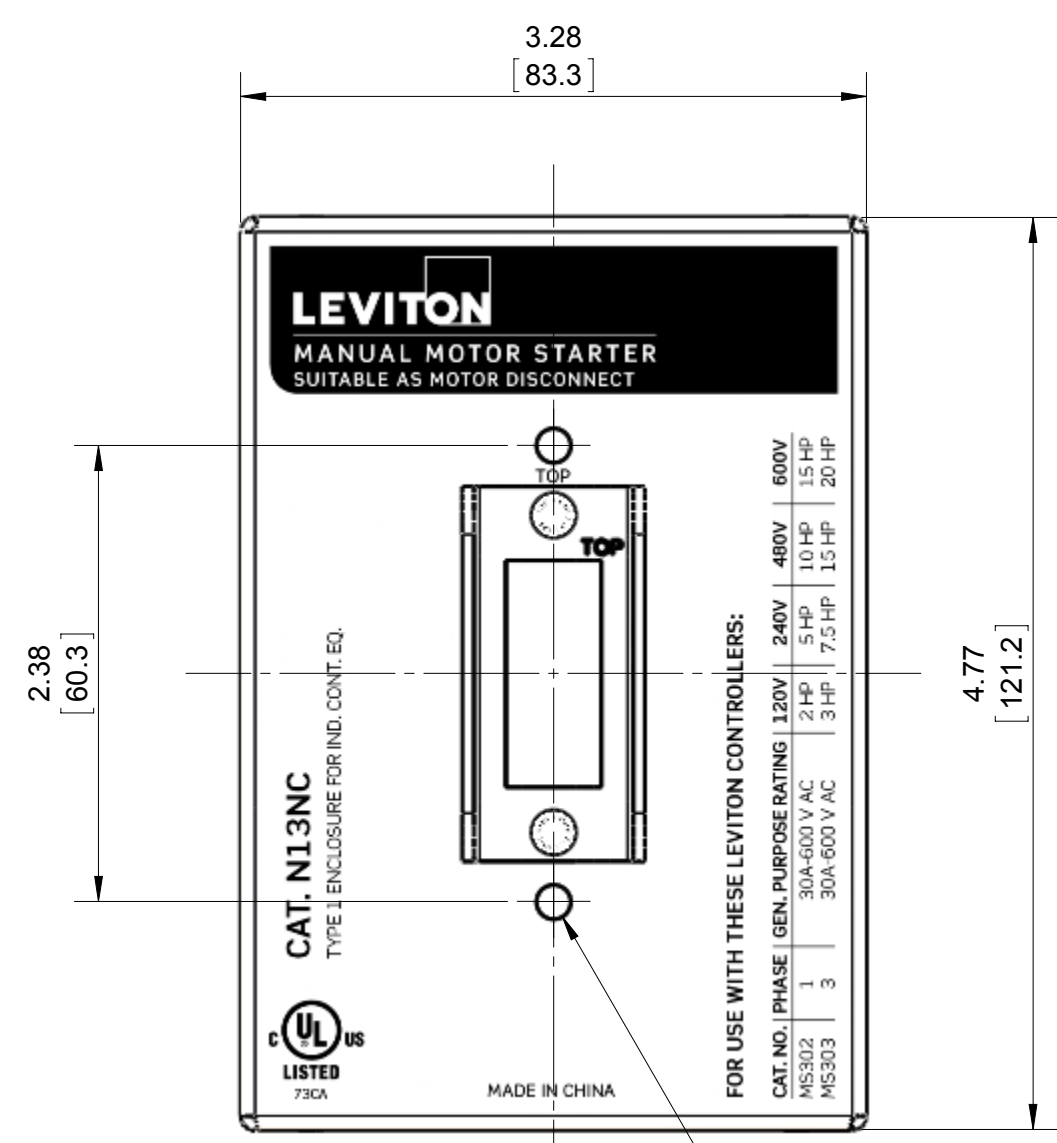
C

B

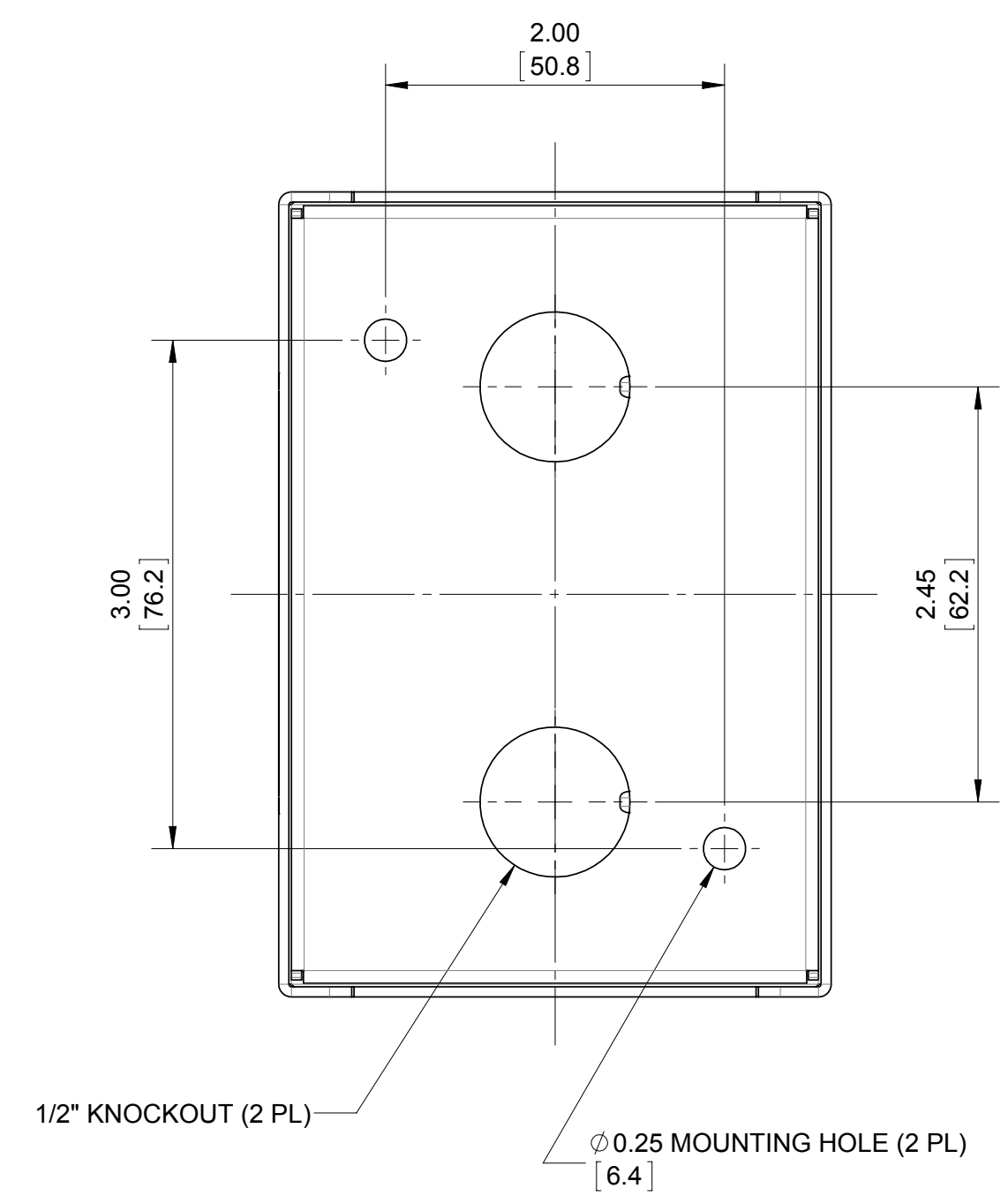
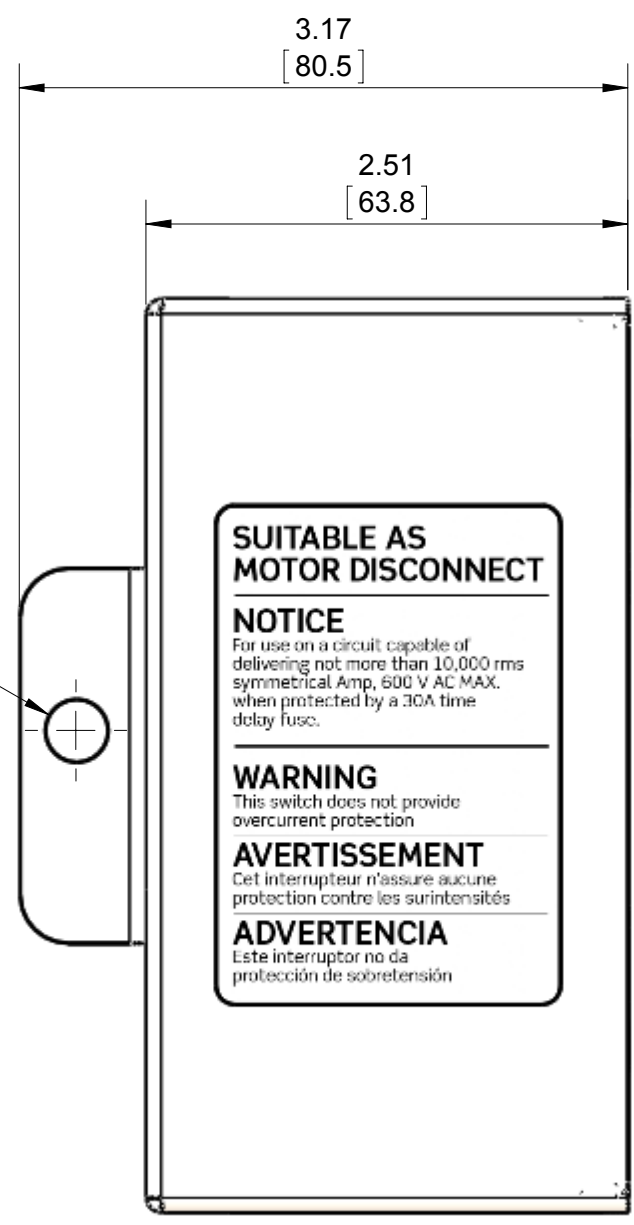
B

A

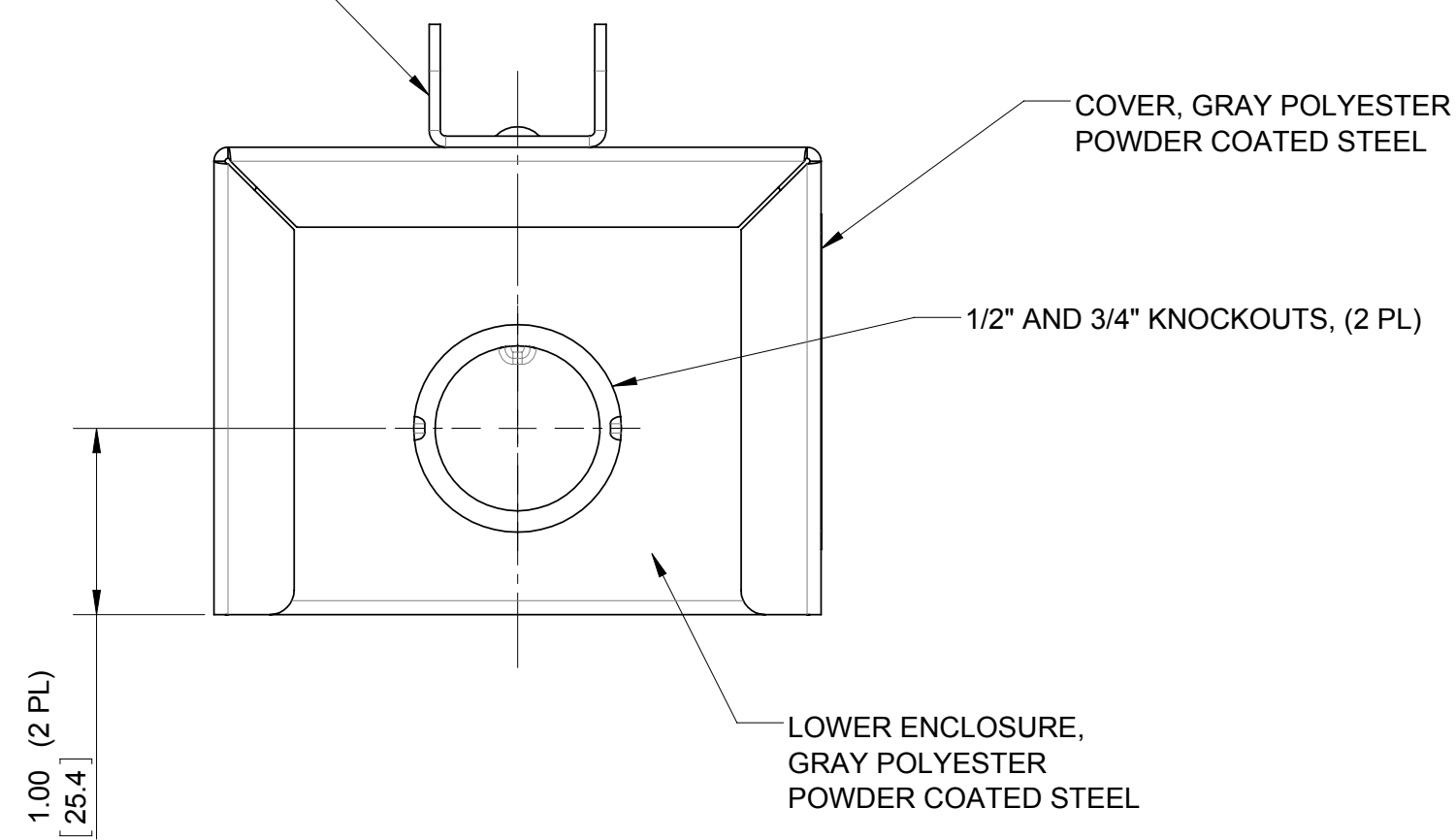
A



Ø 0.33 HOLE (2 PL)
[8.3]



BRACKET, ZINC PLATED STEEL



TYPE 1 METAL ENCLOSURE CATALOG NUMBERS	
CATALOG NUMBER	DESCRIPTION
CAT. #N13NC-0DS	TYPE 1 METAL ENCLOSURE FOR 30A MOTOR STARTER SWITCH
CAT. #N1302-0DS	TYPE 1 METAL ENCLOSURE WITH 30A 2-POLE (1 Ø) MOTOR STARTER SWITCH
CAT. #N1303-0DS	TYPE 1 METAL ENCLOSURE WITH 30A 3-POLE (3 Ø) MOTOR STARTER SWITCH

NOTES:

- UPPER DIMENSIONS ARE IN INCHES. LOWER DIMENSIONS ARE IN MILLIMETERS.

STATUS: Production Release					<p>LEVITON</p> <p>The information in this document is the exclusive PROPRIETARY property of LEVITON MFG. CO., INC. It is disclosed with the understanding that acceptance or review by the recipient constitutes an undertaking by the recipient: (1) to hold this information in strict confidence. (2) not to disclose, duplicate, copy, or use the information, in whole or in part, for any purpose other than that for which disclosed.</p> <p>Copyright 2016. Unpublished. All Rights Reserved.</p>	UNLESS OTHERWISE SPECIFIED: DO NOT SCALE DRAWING. ALL DIMENSIONS ARE IN INCHES. ALL ANGLES ARE IN DEGREES.		TITLE: TYPE 1 ENCLOSURE FOR 30A MMS SWITCH							
REV.		DATE	ECO NUMBER	CHGD		APVD	TOLERANCES		DWN BY	PE1	05/20/2015	ENGRG	JD	02/28/2017	
A		02/28/2017	NEW RELEASE	PE1	JD	INCH .XX ± .01 .XXX ± .005		METRIC .X ± .2 mm .XX ± .1 mm		CHK BY	JD	02/28/2017	MFG	JD	02/28/2017
-		-	-	-	-	ANGLES: ± 1/2°		DWG NO. CATSTD-N13NC-0DS-D01							
-		-	-	-	-	THIRD ANGLE PROJECTION		SIZE C		PROJECT NO. PROJ-03088		REV A			
-		-	-	-	-	ALL PRINTED COPIES ARE UNCONTROLLED		SCALE: 1:1		SHEET 1 OF 1					

4

3

2

1