

# VerifEye™ Mini Meter™ Standalone Meters

## Sub-Metering Solutions for Accurate Measurement & Verification



Mini Meter OEM Module



Mini Meter Indoor Surface Mount Enclosure



Mini Meter Outdoor Enclosure

### DEFINITION

The Leviton VerifEye™ Mini Meter™ line of revenue-grade meters meets the requirements for all single phase, tenant metering applications. Designed to provide a simple and effective process for accurately capturing measurements of power consumption, Mini Meters are easy to specify and install for new construction and retrofits.

- 0.5% kWh Meter, ANSI C12.20 (0.5), NRTL Certified
- 120V 1PH 2W and 120/208/240V 2PH 3W
- 100A and 200A options available
- Compact footprint; fits almost anywhere
- Cost effective solution
- Isolated pulse output channel for AMR compatibility

VerifEye meters utilize highly accurate Current Transformers (CTs) for revenue-grade performance certified to ANSI standards. Mini Meters are compatible with solid core and split core CTs.

Every Mini Meter has an installer-friendly feedback feature. The user friendly reverse phase indicators, found on the meter's LCD, illuminate if a meter is installed improperly. After installation, the green duty cycle light shows that the meter is collecting electric consumption data at the appropriate rate.

### FEATURES

- Measures kWh
- Revenue-grade—0.5% kWh meter conforms to all applicable standards of ANSI C12.20
- Equipped standard with an Isolated Pulse Output channel for integration with automated meter reading platforms
- Available in indoor flush mount and surface mount enclosures as well as outdoor NEMA 4X enclosures
- Utilizes revenue-grade solid core CTs or 1.0% accuracy split core CTs
- “6” models UL/cUL Listed Energy Usage Monitor per CCN FTRZ
- Five year warranty

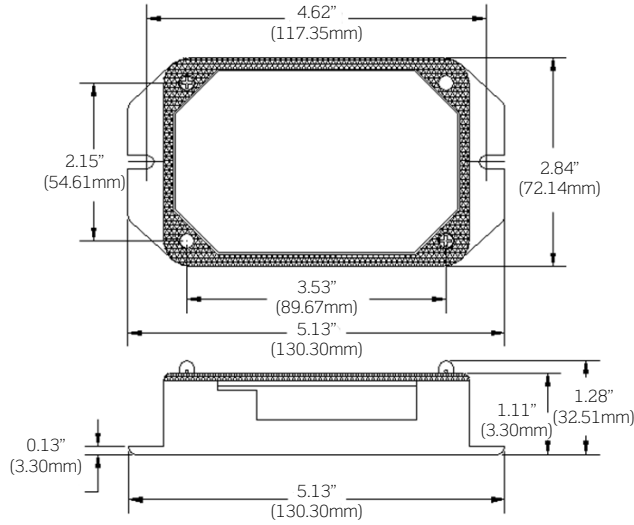
### APPLICATIONS

Use Mini Meter Standalone Meters in multi-tenant residential and certain commercial industrial applications such as campgrounds, and marinas for:

- Load profiling and benchmarking
- AMR/BAS/BMS/EMS integration
- Usage aggregation
- Tenant cost allocation
- Measurement and verification
- Energy conservation and cost reduction
- Green building initiatives and government mandates

**PRODUCT DATA**

**DIMENSIONS OEM METER — MSxCT,MDxCT**

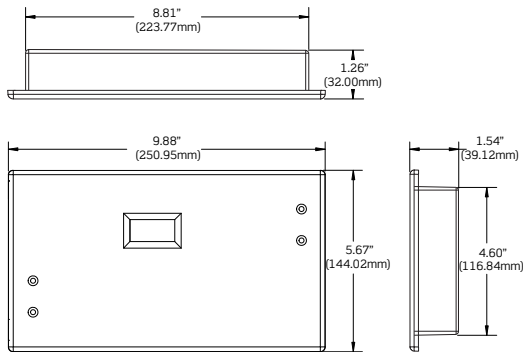


**CONFIGURATIONS**

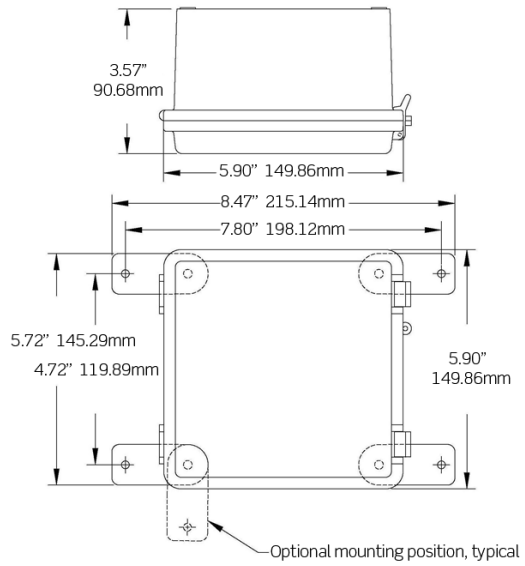
AMPERAGES*	PHASE/VOLTAGES
100 and 200A	1Ø/2W - 120V
100 and 200A	1Ø/3W - 120/208/240V

\* Contact factory for non-US voltage configurations.

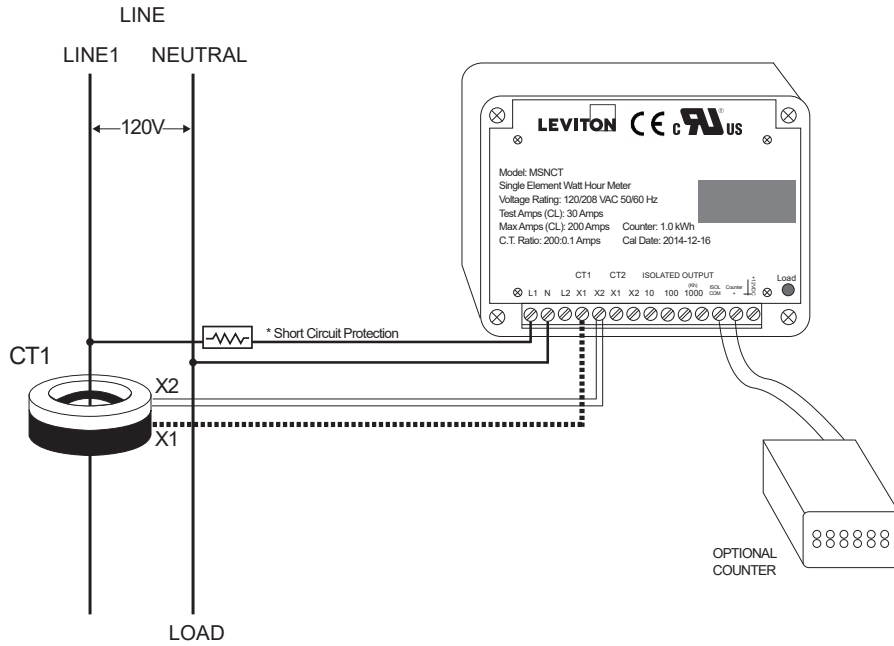
**INDOOR FLUSH MOUNT ENCLOSURE — 6F101, 6F201**



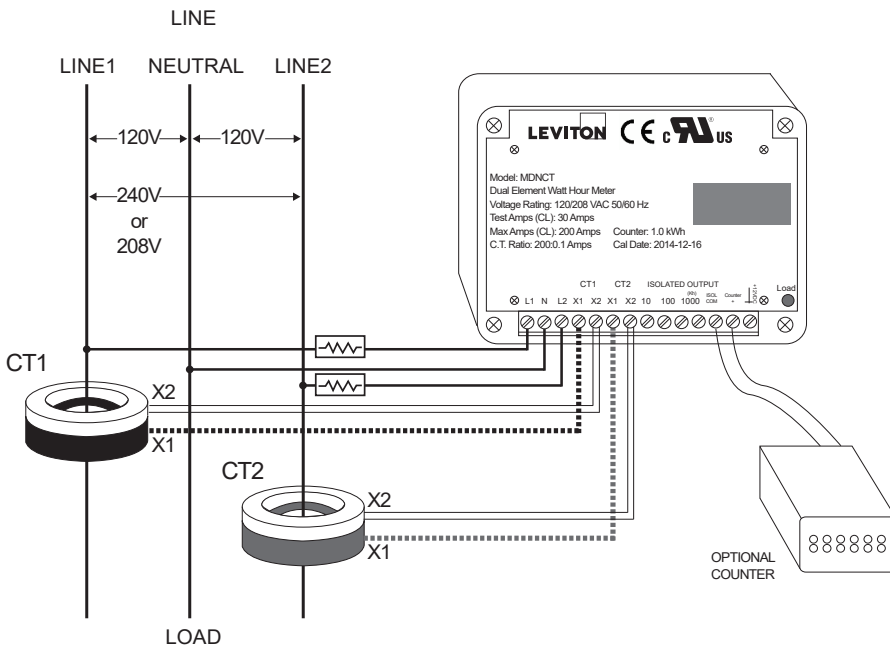
**OUTDOOR ENCLOSURE — 6S101, 6S201**



**SINGLE ELEMENT, MINI METER WIRING DIAGRAM**



**DUAL ELEMENT, MINI METER WIRING DIAGRAM**



**ORDERING INFORMATION**

**OEM MINI METER MODULES**

**NOTE:** The following meters are sold as individual components. Current Transformers (CTs) sold separately. See the Current Transformer data sheet documentation for part numbers and additional information.

VOLTAGE	AMPS	DESCRIPTION	CAT. NO.
<b>SINGLE ELEMENT MINI METER</b>			
120V 1PH 2W	100A	1.0 kWh Self-Contained LCD Counter	MSTCT-1NC
	100A	0.1 kWh Self-Contained LCD Counter	MSNCT-1NC
	200A	1.0 kWh Self-Contained LCD Counter	MSTCT-2NC
	200A	0.1 kWh Self-Contained LCD Counter	MSNCT-2NC
VOLTAGE	AMPS	DESCRIPTION	CAT. NO.
<b>DUAL ELEMENT MINI METER</b>			
120/240V 1PH/3W Split Phase, 120/208 2PH/3W	100A	1.0 kWh Self-Contained LCD Counter	MDTCT-1NC
	100A	0.1 kWh Self-Contained LCD Counter	MDNCT-1NC
	200A	1.0 kWh Self-Contained LCD Counter	MDTCT-2NC
	200A	0.1 kWh Self-Contained LCD Counter	MDNCT-2NC

**MINI METERS - INDOOR FLUSH MOUNT ENCLOSURE**

**NOTE:** The following meters are sold as individual components. Current Transformers (CTs) sold separately. See the Current Transformer data sheet documentation for part numbers and additional information.

VOLTAGE	AMPS	DESCRIPTION	CAT. NO.
<b>INDOOR FLUSH MOUNT SINGLE ELEMENT MINI METER</b>			
120V 1PH 2W	100A	1.0 kWh Self-Contained LCD Counter	6F101-C01
	200A		6F101-C02
<b>INDOOR FLUSH MOUNT DUAL ELEMENT MINI METER</b>			
120/240V 1PH 3W Split Phase, 120/208 2PH/3W	100A	1.0 kWh Self-Contained LCD Counter	6F201-C01
	200A		6F201-C02

**MINI METERS - OUTDOOR ENCLOSURE**

**NOTE:** The following meters are sold as individual components. Current Transformers (CTs) sold separately. See the Current Transformer data sheet documentation for part numbers and additional information.

VOLTAGE	AMPS	DESCRIPTION	CAT. NO.
<b>OUTDOOR SINGLE ELEMENT MINI METER</b>			
120V 1PH 2W	100A	Mechanical 1 kWh Counter	6S101-B01
	200A		6S101-B02
	100A	Mechanical 0.1 kWh Counter	6S101-D01
	200A		6S101-D02
<b>OUTDOOR DUAL ELEMENT MINI METER</b>			
120/240V 1PH 3W Split Phase, 120/208 2PH/3W	100A	Mechanical 1 kWh Counter	6S201-B01
	200A		6S201-B02
	100A	Mechanical 0.1 kWh Counter	6S201-D01
	200A		6S201-D02

VerifEye™ Mini Meter™ Standalone Meters

**Leviton Manufacturing Co., Inc. Energy Management, Controls and Automation**

20497 SW Teton Avenue, Tualatin, OR 97062 **tel** 800-736-6682 **fax** 503-404-5594 **tech line** (6:00AM-4:00PM PT Mon-Fri) 800-959-6004

**Leviton Manufacturing Co., Inc. Global Headquarters**

201 North Service Road, Melville, NY 11747-3138 **tel** 800-323-8920 **fax** 800-832-9538 **tech line** (8:30AM-7:00PM ET Mon-Fri) 800-824-3005

**Visit our Website at: [www.leviton.com/verifeye](http://www.leviton.com/verifeye)**

©2018 Leviton Manufacturing Co., Inc. All rights reserved. Subject to change without notice.