

Application Note

Mounting Options for the Leviton e2XHD Mini Panel



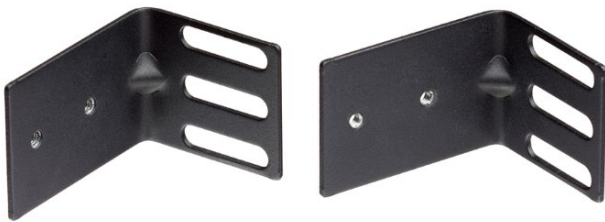
Application Note ID:
NS-AN-22-007-09-13-22

Date:
September 13, 2022

Product Line:
e2XHD

Part Numbers Affected:
E2XMB-D12
E2XMB-S12
5WMNB-ACC

The e2XHD Mini Panel is a compact bracket design that accepts two Leviton e2XHD single height cassettes or one e2XHD double height cassettes. It is ideal for Copper and Fiber applications requiring a small footprint and mounting flexibility. The Mini Panel includes 4ea #10 wood screws for mounting to common wall or plywood surfaces. Additional mounting options are available via Leviton's Mounting Ear Bracket Kit (Part No. 5WMNB-ACC, sold separately).



The Leviton Mounting Ear Bracket Kit includes two ears, four #8-32 machine screws for mounting the ears to the Mini Panel, and four #12-24 rack screws. The ears have slots that align with standard rack (EIA 310-D) hole positioning. Additional hardware required for mounting such as rack or cabinet screws and cage nuts will be user supplied.

USA
Network Solutions Headquarters
+1 (800) 722 2082
infoUSA@leviton.com

Leviton Berk-Tek Cable: +1 (800) 237 5835
berktek.info@leviton.com

Asia Pacific
+852 3620 2602
infoAPAC@leviton.com

Canada
+1 (800) 461 2002
infoCanada@leviton.com

Europe
+44 (0) 1592 772124
infoEurope@leviton.com

Latin America
MX: +52 (55) 2128 6286
LATAM: +52 (55) 2333 5963
infoLATAM@leviton.com

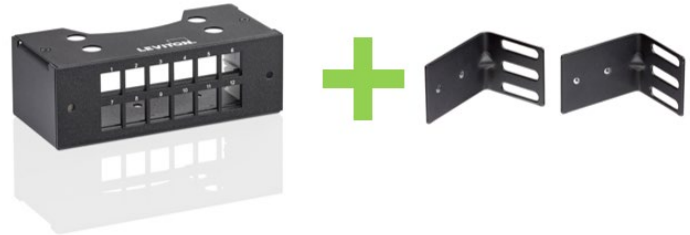
Middle East & Africa
+971 (4) 247 9800
infoMEA@leviton.com

NETWORK SOLUTIONS PRODUCTS ARE AVAILABLE WORLDWIDE IN OVER 100 COUNTRIES. VISIT US ONLINE AT LEVITON.COM/NS TO LEARN MORE.

Mounting the Mini Panel to a standard Rack or Cabinet rail

Required Components:

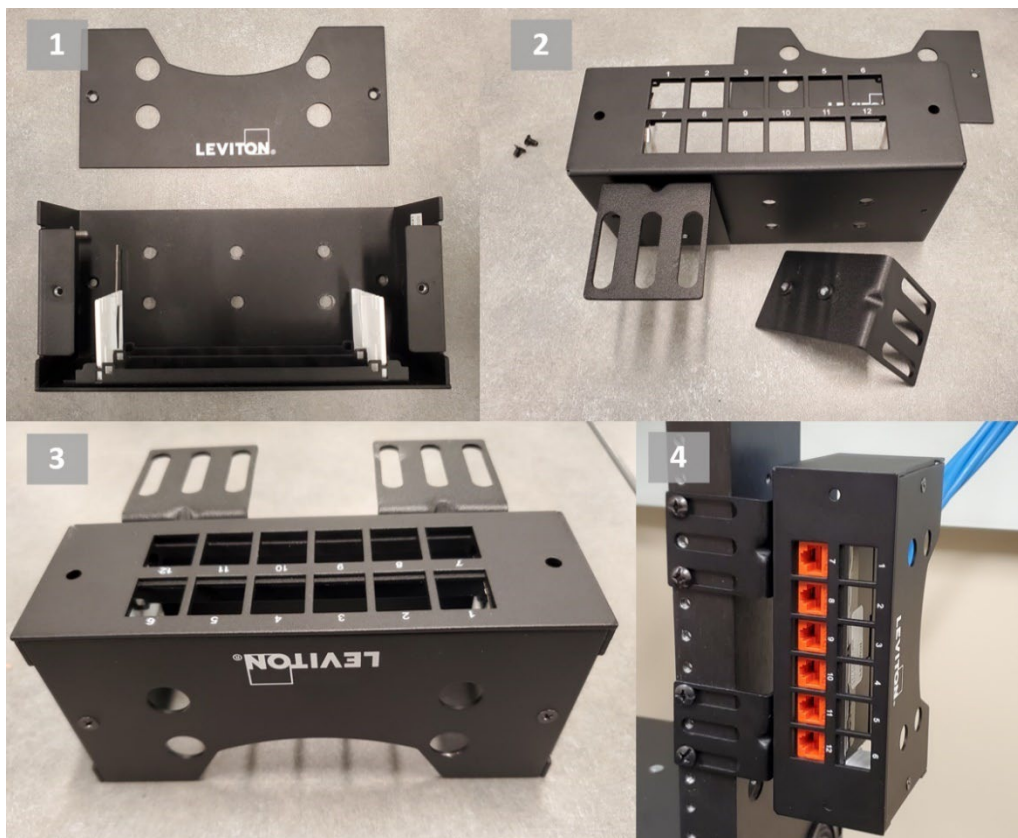
1. One, e2XHD Mini Panel
2. One, Mounting Ear Bracket Kit



Instructions:

1. Remove Mini Panel Cover (Figure 1)
2. Install the mounting ears from the Mounting Ear Bracket Kit to the panel using the outer set of through holes (Figure 2)
3. Once both ears are installed, re-install the cover (Figure 3)
4. Using supplied rack or cabinet screws, mount the Mini Panel in the desired location (Figure 4)

Note: Depending on configuration the mini panel can share the associated rack units with existing equipment. When installed in this fashion the panel sits vertically over three rack units.



USA
Network Solutions Headquarters
+1 (800) 722 2082
infoUSA@leviton.com

Leviton Berk-Tek Cable: +1 (800) 237 5835
berktek.info@leviton.com

Asia Pacific
+852 3620 2602
infoAPAC@leviton.com

Canada
+1 (800) 461 2002
infoCanada@leviton.com

Europe
+44 (0) 1592 772124
infoEurope@leviton.com

Latin America
MX: +52 (55) 2128 6286
LATAM: +52 (55) 2333 5963
infoLATAM@leviton.com

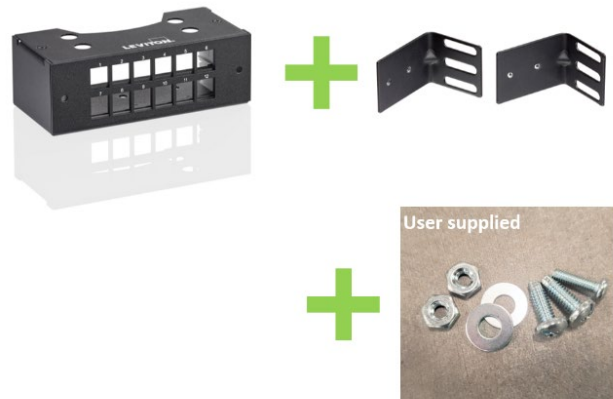
Middle East & Africa
+971 (4) 247 9800
infoMEA@leviton.com

NETWORK SOLUTIONS PRODUCTS ARE AVAILABLE WORLDWIDE IN OVER 100 COUNTRIES. VISIT US ONLINE AT LEVITON.COM/NS TO LEARN MORE.

Mounting the Mini Panel to Ladder Tray

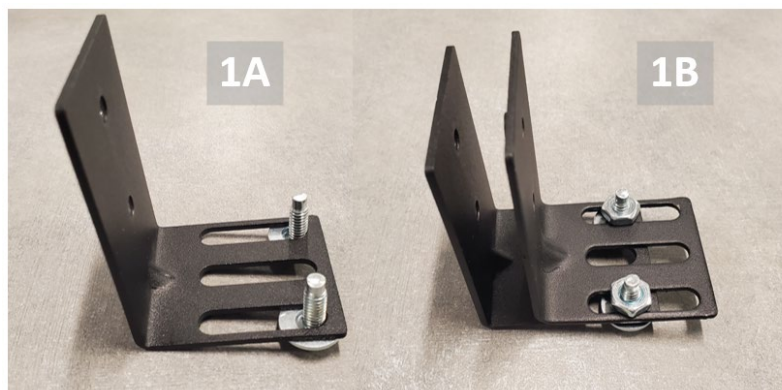
Required Components:

1. One, e2XHD Mini Panel
2. One, Mounting Ear Bracket Kit
3. User supplied hardware
 - Two #10 or #12 Machine Screws
 - Corresponding Nuts & Washers
 - One #8 Machine Screw

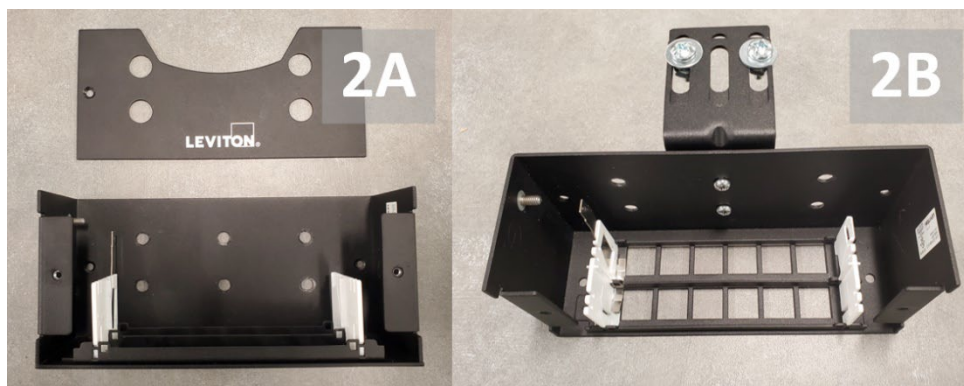


Instructions:

1. Assemble the mounting ears together using the user supplied #10 or #12 machine screws, nuts, and washers. Tighten down but do not snug fasteners (Figure 1A and 1B)



2. Remove Mini Panel Cover and install the mounting ear assembly from Step 1 onto the center set of through holes (figure 2A & 2B) then re-install the cover



USA
Network Solutions Headquarters
+1 (800) 722 2082
infoUSA@leviton.com

Leviton Berk-Tek Cable: +1 (800) 237 5835
berktek.info@leviton.com

Asia Pacific
+852 3620 2602
infoAPAC@leviton.com

Canada
+1 (800) 461 2002
infoCanada@leviton.com

Europe
+44 (0) 1592 772124
infoEurope@leviton.com

Latin America
MX: +52 (55) 2128 6286
LATAM: +52 (55) 2333 5963
infoLATAM@leviton.com

Middle East & Africa
+971 (4) 247 9800
infoMEA@leviton.com

NETWORK SOLUTIONS PRODUCTS ARE AVAILABLE WORLDWIDE IN OVER 100 COUNTRIES. VISIT US ONLINE AT LEVITON.COM/NS TO LEARN MORE.

3. Position the Mini Panel on the intended ladder rack location, adjust bracket as needed and snug fasteners (Figure 3)



4. The 8-32 machine screw can be installed in the lowest open position on the outer bracket to serve as a stop (Figure 4)



USA
Network Solutions Headquarters
+1 (800) 722 2082
infoUSA@leviton.com

Leviton Berk-Tek Cable: +1 (800) 237 5835
berktek.info@leviton.com

Asia Pacific
+852 3620 2602
infoAPAC@leviton.com

Canada
+1 (800) 461 2002
infoCanada@leviton.com

Europe
+44 (0) 1592 772124
infoEurope@leviton.com

Latin America
MX: +52 (55) 2128 6286
LATAM: +52 (55) 2333 5963
infoLATAM@leviton.com

Middle East & Africa
+971 (4) 247 9800
infoMEA@leviton.com

NETWORK SOLUTIONS PRODUCTS ARE AVAILABLE WORLDWIDE IN OVER 100 COUNTRIES. VISIT US ONLINE AT LEVITON.COM/NS TO LEARN MORE.