

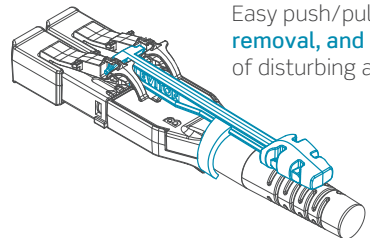
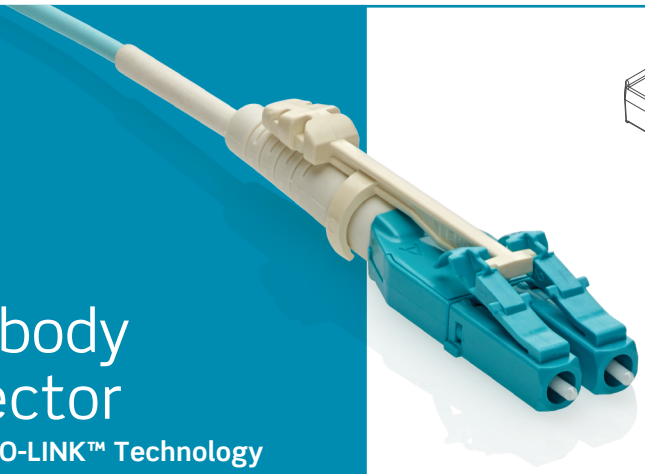
SPECTRO-LINK™ Technology

Premium Ferrule Alignment | Precise Insertion and Extraction
Simple and Safe Polarity Changes | Low Profile Design

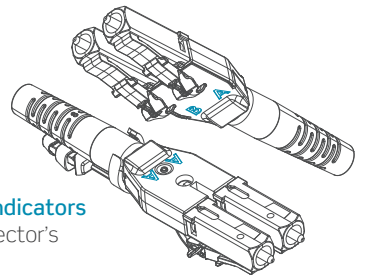


LC Unibody Connector with SPECTRO-LINK™ Technology

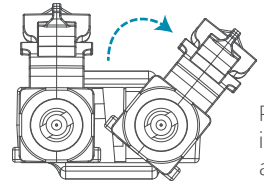
The LC Unibody Connector with SPECTRO-LINK™ Technology is designed to make installation and MAC work easier, cleaner, and higher performing. It provides network reliability and superior optical performance, efficiency in MACs, ease of polarity reversal, and low insertion loss performance. The connector is ideal for deployment in high density applications and mission-critical networks demanding the highest level of performance and reliability. SPECTRO-LINK Technology is available on pre-terminated trunks, harnesses, and patch cords.



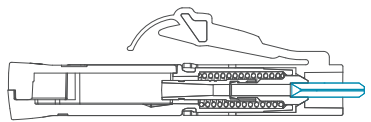
Easy push/pull grip puller **makes installation, removal, and MAC work** easy and removes risk of disturbing adjacent mated connectors.



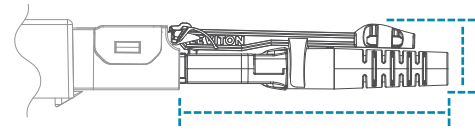
Patented **A and B polarity indicators** clearly show when the connector's polarity has been reversed.



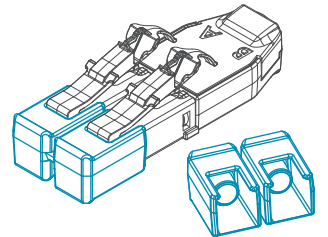
Patented **polarity reversal** ferrule assemblies stay fixed in place while the latching front bodies rotate independently, assuring fibers are not moved or twisted.



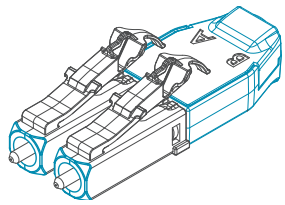
Premium ceramic ferrules provide **lower insertion loss** while allowing extended reach and multi-connection channels.



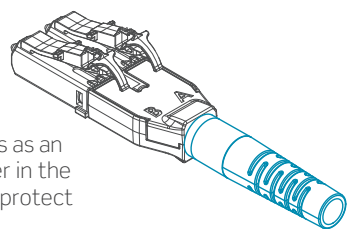
Low profile height improves access and **manageability in high density applications**, and compact 2.2" length minimizes congestion in horizontal patching.



Airtight **dual sealing duplex protective caps** prevent contamination, preserving the pristine clean from the factory up to usage.



Beveled leading edges and unibody housing help guide connector into hard-to-see ports on the first attempt.



Bend control fiber boot serves as an omnidirectional shock absorber in the shortest length necessary to protect fibers from damage.