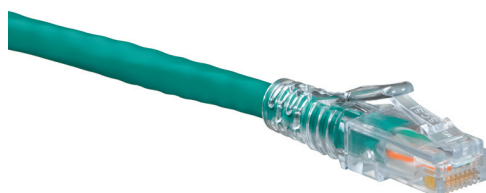


Cat 6 SlimLine Boot UTP Patch Cords

APPLICATION

Cat 6 SlimLine Boot UTP Patch Cords feature low-profile strain-relief boots to support high-density panels and switches. The snagless design makes the patch cords an excellent choice in environments with frequent moves, adds, and changes.



SPECIFICATION

Patch cords shall meet or exceed electrical transmission performance requirements of links and channels as described in ANSI/TIA-568.2-D (Cat 6) and ISO/IEC 11801-1 (Class E) and EN 50173-1 (Class E). Patch cords shall be stranded conductor with an 8-position modular plug on each end. The cords shall include a high-density boot design that allows for easy removal of the cord without snagging. Patch cord plug shall be clear and contacts shall have industry-standard, ANSI/TIA-1096-A compliant 50 microinches of gold plating. Patch cord country of origin shall be USA.

COUNTRY OF ORIGIN

USA

WARRANTY INFORMATION

For Leviton product warranties, go to leviton.com/ns/warranty

FEATURES

- Tested and verified to meet Cat 6 component requirements for TIA, ISO/IEC, and EN standards.
- Snagless plug design
- Stranded conductor for longer flex-life
- Enhanced strain relief
- Improved plug access in tight spaces
- Manufactured by Leviton using Berk-Tek cable

DESIGN CONSIDERATIONS

- ANSI/TIA channel performance limits total length of patching and equipment cords to 32 feet (10 meters) per ANSI/TIA-568.2-D
- A variety of colors for color coding or organization
- Stranded cable construction for maximum flexibility

STANDARDS & REGULATIONS

- ANSI/TIA-568.2-D (Cat 6)
- ISO/IEC 11801-1 (Cat 6)
- EN 50173-1 (Cat 6)
- ANSI/TIA-1096-A (formerly FCC Part 68)
- UL 444 CM Rated
- IEEE 802.3bt PoE Type 1, 2, 3, 4 (90 watts max)
- Cisco UPOE, UPOE+ (90 watts max)
- Power over HDBaseT™ PoH (95 watts max)
- For 100 watt applications - Up to 100 cables in a bundle
- cULus Listed (UL 1863)
- RoHS 3

MECHANICAL SPECIFICATIONS

Dimensions: See page two

Outer Diameter: 0.250 inches

Materials: 24 AWG, UTP stranded conductor, modular non-keyed 8P8C

Colors: White, yellow, red, orange, violet, blue, green, gray, and black

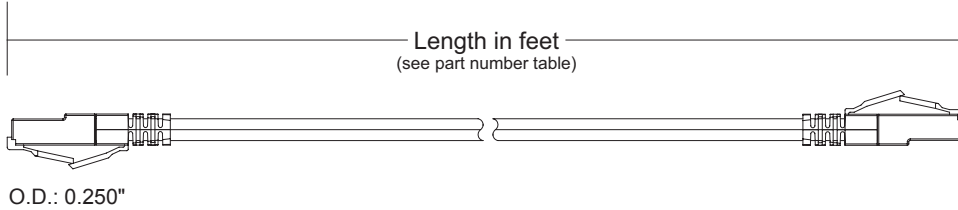
Environmental Conditions: Operating Temperature: -20 °C to +75 °C

Installation Temperature: 0 °C to +50 °C

Voltage Rating: 300V

PRODUCT SPECIFICATIONS
6D560-xxx

6D560-xxx



PART NUMBERS

Description	Part No.
Cat 6 SlimLine Boot UTP Patch Cord, COO: USA	6D560-xx*

* = Color: White (W), Yellow (Y), Red (R), Orange (O), Violet (V), Blue (L), Green (G), Gray (S), Black (E)
 xx = length in feet (1 - 200 feet)



For assistance customizing your patch cords, please visit www.leviton.com/configurator or call Tech Support at 800.824.3005.



For further support information, visit leviton.com/ns/support

USA
 Network Solutions Headquarters
 +1 (800) 722 2082
infoUSA@leviton.com
 Leviton Berk-Tek Cable: +1 (800) 237 5835
berktek.info@leviton.com

Asia Pacific
 +852 3620 2602
infoAPAC@leviton.com

Canada
 +1 (800) 461 2002
infoCanada@leviton.com

Europe
 +44 (0) 1592 772124
infoEurope@leviton.com

Latin America
 MX: +52 (55) 2128 6286
 LATAM: +52 (55) 2333 5963
infoLATAM@leviton.com

Middle East & Africa
 +971 (4) 247 9800
infoMEA@leviton.com

NETWORK SOLUTIONS PRODUCTS ARE AVAILABLE WORLDWIDE IN OVER 100 COUNTRIES. VISIT US ONLINE AT LEVITON.COM/NS TO LEARN MORE.