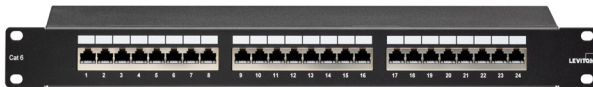


## Cat 6 Flat Punch Down Patch Panels

### APPLICATION

Leviton Cat 6 UTP and Shielded Flat Punch Down Panels are designed for use in 19-inch standard racks and cabinets. An installer-friendly design allows for quick installation due to standard 110 terminations on the rear of the panels which follows the normal installation color sequence (blue, orange, green, brown). All panels are backward compatible. Each panel has been designed with a cable management/strain relief feature built into the rear.



### SPECIFICATION

Patch panels shall meet or exceed the requirements for channel- and component-level performance as described in ANSI/TIA-568.2-D Category 6 standards, as well as the Class E requirements described in ISO/IEC 11801-1. Panels shall feature both T568A and T568B wiring configurations, white IDC 110-punchdown modules. Panels shall have universal T568A and T568B wiring termination instructions. Panels shall be made of 16-gauge steel and shall have a black painted finish with white silk screening. The plastic elements shall be fire retardant with a UL flammability rating of 94V-0. Panels shall be offered in 24-port configurations and include an earthing jumper. Patch panels shall be configured with eight port modules. The 110 termination on the rear of the panels shall follow normal installation color sequence (blue, orange, green, brown) from top to bottom.

### FEATURES & BENEFITS

- Shielded and Unshielded versions available
- Integrated rear cable management
- Silk-screened port numbering and label blocks above each for easy individual port identification
- Backward compatible
- Terminates 26-22 AWG solid conductors
- Capable of multiple re-terminations
- Capable of either 110 or LSA style terminations
- Color coding for both T568A and T568B wiring termination
- The jack conforms to 'over stress' testing up to 2500 insertion cycles with a standard plug

### STANDARDS & REGULATIONS

- IEC60603-7 and IEC60603-7-1 Series
- ISO/IEC 11801-1 (Class E)
- EN 50713-1 (Class E)
- ANSI/TIA-568.2-D (Cat 6)

### MECHANICAL SPECIFICATIONS

Dimensions:	See page 2
Materials:	16-gauge steel, black powder coat; PCB and other components are rated per UL94V-0
Temp. (Storage):	-40 °C to +70 °C (-40 °F to +158 °F)
Temp. (Installation):	Refer to cable installation temperature
Temp. (Operating):	-10°C to +60 °C (+14 °F to +140 °F)
Humidity (Max.):	93% relative humidity, non-condensing

### COUNTRY OF ORIGIN

Taiwan

### WARRANTY INFORMATION

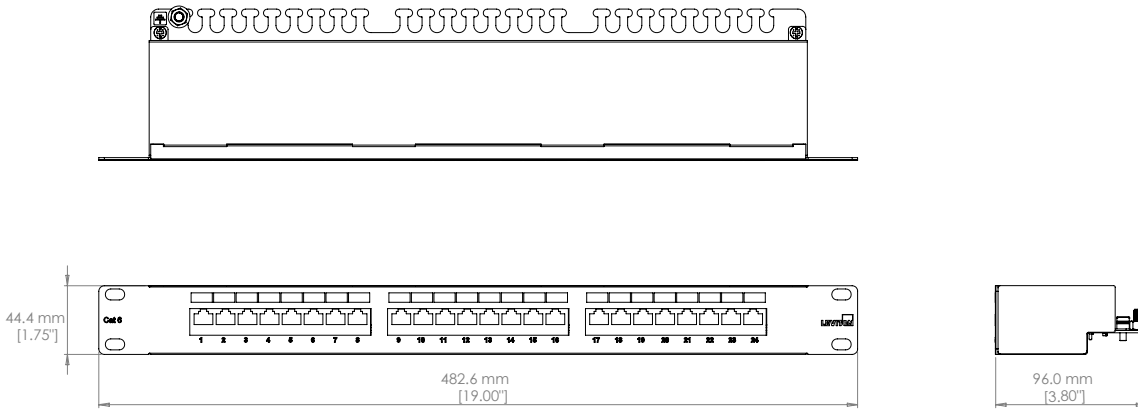
For Leviton product warranties, go to [Leviton.com/NS/Warranty](http://Leviton.com/NS/Warranty)

6x586-024

**PRODUCT SPECIFICATIONS**

**6x586-024**

**6x586-024**



PART NUMBER	
Description	Part No.
Cat 6 Shielded Flat LSA-Style Patch Panel, 24-Port, 1RU, black	6S586-024
Cat 6 UTP Flat 110-Style Patch Panel, 24-Port, 1RU, black	69586-024

For further support information, visit [Leviton.com/NS/Support](http://Leviton.com/NS/Support)

Page 2 of 2

**USA**  
 Network Solutions Headquarters  
 +1 (800) 722 2082  
 infoUSA@leviton.com  
 Leviton Cable (formerly Berk-Tek)  
 +1 (800) 237 5835 | infoUSA@leviton.com

**Asia Pacific**  
 +852 3620 2602  
 infoAPAC@leviton.com

**Canada**  
 +1 (800) 461 2002  
 infoCanada@leviton.com

**Europe**  
 +44 (0) 1592 772124  
 infoEurope@leviton.com

**Latin America**  
 MX: +52 (55) 2128 6286  
 LATAM: +52 (55) 2333 5963  
 infoLATAM@leviton.com

**Middle East & Africa**  
 +971 (4) 247 9800  
 infoMEA@leviton.com

NETWORK SOLUTIONS PRODUCTS ARE AVAILABLE WORLDWIDE IN OVER 100 COUNTRIES. VISIT US ONLINE AT [LEVITON.COM/NS](http://Leviton.com/NS) TO LEARN MORE.