

Getting Started Guide



SWITCH

READ THESE INSTRUCTIONS
BEFORE INSTALLING



Welcome to the Decora Smart family of Z-Wave™ enabled devices



See the complete line of Z-Wave enabled dimmers, switches, outlets, fan speed controllers, and plug-ins at leviton.com/decorasmart



Welcome



The Decora Smart Z-Wave™ 800 Series Switch is designed for use with modern Z-Wave hubs and makes it easier than ever to control your lights how you want.

This switch is compatible with any Z-Wave enabled network, regardless of the manufacturer, and can also be used with other devices displaying the Z-Wave logo. As well, this device can act as a repeater to increase the reliability of the Z-Wave network.

The Decora Smart Z-Wave 800 Series Switch looks right at home with your other Decora® in-wall devices and features intuitive on/off control. Add the switch to your Z-Wave hub of choice to enable app commands, scheduling, and voice control of connected lighting.

🔍 We are here to help

- ONLINE**
decorasmartsupport.leviton.com
- CHAT**
www.leviton.com/support
- EMAIL**
dssupport@leviton.com
- CALL**
1-800-824-3005 (USA)
1-800-405-5320 (Canada)



Your switch works with:

- General purpose loads up to 15A, for specific ratings, see the chart below.
- Do not use your switch with metal wallplates or aluminum wire.
- **Additional self-service support options can be found at leviton.com/decorasmart**

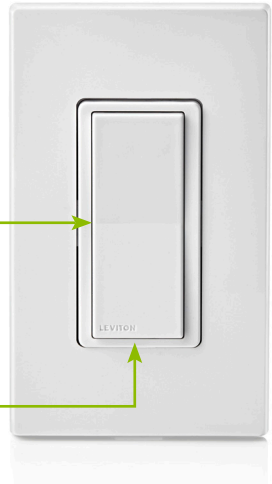


RATINGS	
General Use	15A, 120VAC, 60Hz
LED/CFL/Electronic Ballast	5A
Incandescent/Halogen	1500W
Magnetic Ballast	15A
Motor	3/4 HP
Operating Temp	32°F - 104°F (0°C - 40°C)
Operating Humidity	10% - 90% non-condensing
NETWORK	
Z-Wave Plus	908.40, 908.42, 916.00 MHz



Features

- Rocker**
 - Press the top to turn ON.
 - Press the bottom to turn OFF.
- Status LED**
 - Illuminates when the lights are OFF so you can find the switch in the dark.
 - Provides connectivity feedback.



DI-000-ZW15S-02A

Cat. No. ZW15S

If you need help...

- ONLINE**
decorasmartsupport.leviton.com
- CHAT**
www.leviton.com/support
- EMAIL**
dssupport@leviton.com
- CALL**
1-800-824-3005 (USA)
1-800-405-5320 (Canada)

Leviton Manufacturing Co., Inc.
201 North Service Road, Melville, NY 11747

© 2023 Leviton Manufacturing Co., Inc. All rights reserved.

Specifications subject to change at any time without notice.



What you need to make it work:

- A Z-Wave compatible hub.
- A Z-Wave mesh network to join. Ensure your device is installed within **50 ft** of the hub or another Z-Wave enabled repeater. Communication through exterior surfaces may reduce transmission distances.
- An available interior switch wallbox with a line (hot), load, neutral, and ground wire.
- To control the switch from more than one location such as in a 3-way or multi-way, you will need a wired DD0SR Companion device. Learn more about Companion devices and find connection instructions at leviton.com/decorasmart



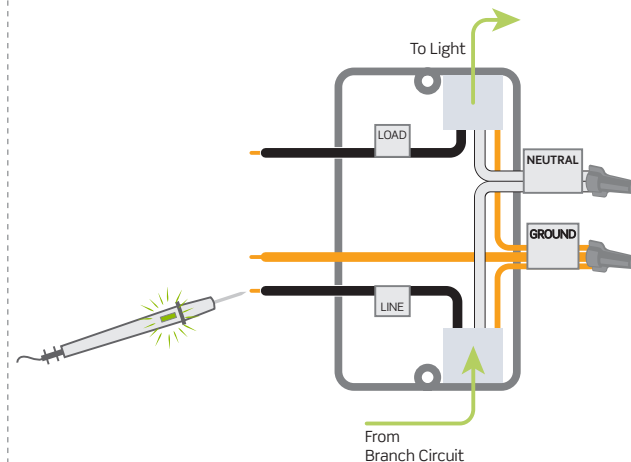
Identify your wires

WARNING: TO AVOID FIRE, SHOCK, OR DEATH, turn OFF power at the circuit breaker.

Check your wallbox:

1. Remove wallplate and disconnect existing switch.
2. Restore power. Carefully test wires with voltage tester to find the line (hot) wire.
3. **Turn OFF power at the circuit breaker.**
4. Mark the wires as shown below. Please note neutral wires are required to operate this device.

Quick tip: Neutral wires are typically white and will be found bundled inside the electrical box.



If your wallbox looks different, call an electrician.



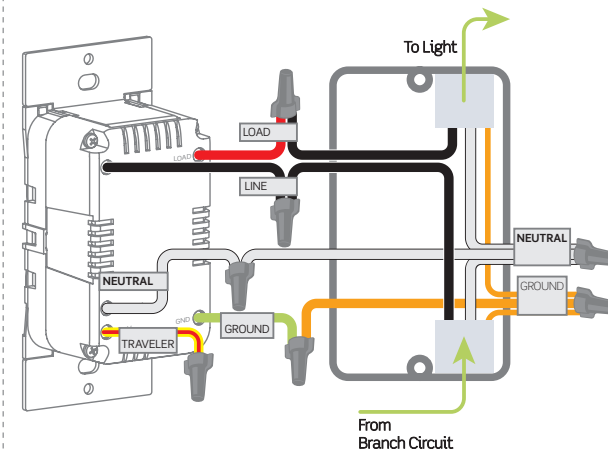
Wire your switch

Single-pole installation:

1. Work only one connection at a time.
2. Connect wires as shown using the included wire connectors.

NOTES:

- Neutral connection is required.
- The YELLOW/RED traveler wire is only used in 3-way applications; remember to put a wire connector on the YELLOW/RED traveler even if not in use.

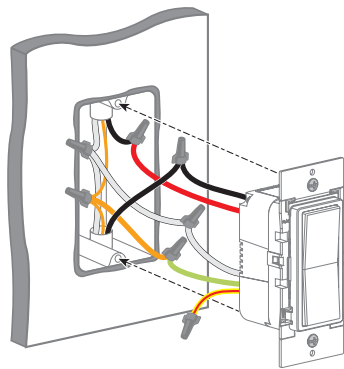


If your wallbox contains a different wiring configuration, contact Leviton's technical support team or consult an electrician.



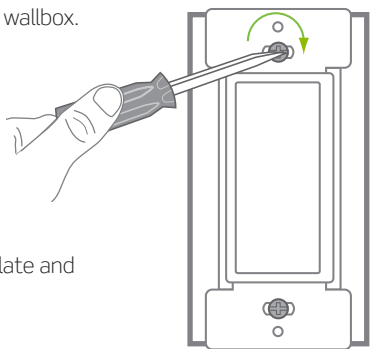
Test and install

1. Restore power.
2. After powering ON the switch to confirm it is receiving power, turn the power back OFF again at the breaker prior to completing the installation.



WARNING: Turn OFF power at the circuit breaker before screwing in your switch.

3. Gently push wires into wallbox. Screw switch to box.



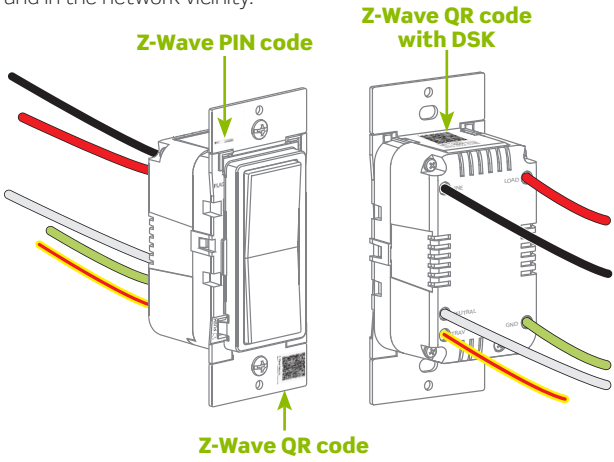
4. Snap on Decora wallplate and restore power.

**Congratulations!
Your Decora Smart Switch
is ready to control your light.**

SmartStart

Your Decora Smart Z-Wave 800 Series Switch is compatible with SmartStart.

SmartStart enabled devices can be added to a Z-Wave network by scanning the Z-Wave QR code on the top of the device, on the strap, or on the back of the unit box with a compatible Z-Wave controller that supports SmartStart inclusion. The device should be added automatically within 10 minutes of being switched on and in the network vicinity.



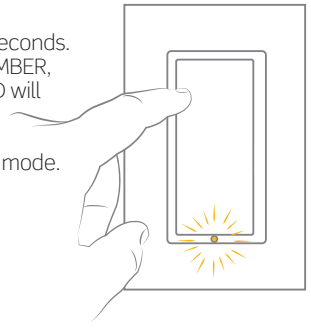
The QR code label with DSK is located on the top of the device. If required, the PIN code is underlined on the label. The PIN code is also located on the front strap.

9

Setup mode

Enter setup mode:

1. Hold the top rocker for 7 seconds. The Status LED will turn AMBER, release and the Status LED will blink AMBER.
2. The device is now in setup mode.



Exit setup mode:

1. Hold the top rocker for 7 seconds until the LED turns AMBER. The device will return to normal operation.

10

Adding the Decora Smart Z-Wave 800 Series Switch to a hub

When using a Z-Wave Plus certified hub, choose network wide inclusion or SmartStart. If network wide inclusion does not discover your device, try classic inclusion.

Network Wide Inclusion to a Z-Wave Network

Network Wide Inclusion allows your device to be included into the network using devices already paired to your home automation hub.

Start with the devices closest to the hub and work your way outward.

1. Enter setup mode (see page 10).
2. Tap the top rocker 1 time. The Status LED will quickly flash GREEN. The device is now ready to learn into the Z-Wave network.
3. Use the Z-Wave controller to complete the device enrollment process (follow the Z-Wave controller instructions)
4. The device's Status LED will turn OFF and then flash GREEN 4 times to confirm it has been successfully added to a Z-Wave network. If the device was not successfully added, the Status LED will flash RED 4 times.

11

Classic inclusion to a Z-Wave network

For older controllers, Classic Inclusion is supported. Depending on the age of the controller it may need to be 3 to 35 feet from the device when including.

1. Enter setup mode (see page 10).
2. Follow the Z-Wave controller instructions to enter inclusion mode.
3. Tap the top rocker 1 time, the Status LED will quickly flash GREEN.
4. The Z-Wave controller will confirm successful inclusion to the Z-Wave network.

Exclusion from a Z-Wave network

The Exclusion command found in the Z-Wave controller is used as a best practice for removing devices from a Z-Wave network.

1. Enter setup mode (see page 10).
2. Follow the Z-Wave controller instructions to enter exclusion mode.
3. Tap the top rocker 1 time, the Status LED will quickly flash GREEN.
4. The Z-Wave controller will confirm successful exclusion from the Z-Wave network.

12

Safety first

WARNINGS:

- TO AVOID FIRE, SHOCK, OR DEATH; TURN OFF POWER at circuit breaker or fuse and test that power is off before wiring!
- TO AVOID FIRE, PERSONAL INJURY OR PROPERTY DAMAGE, DO NOT install to control a receptacle.
- This product is to be installed and/or used in accordance with electrical codes and regulations.
- For indoor use only.
- If you are unsure about any part of these instructions, consult an electrician.

CAUTIONS:

- The Decora Smart branded ZW15S is not compatible with standard 3-way or 4-way switches. Use only (1) Decora Smart branded ZW15S switch in a wired multi-location circuit with up to 9 DDOSR-01Z Switch Companions or up to 4 DDOSR-DLZ Switch Companions.
- Maximum wire length from switch to all installed companion devices cannot exceed 300 ft (90m).
- Save this instruction sheet. It contains important technical data along with testing and troubleshooting information which will be useful after installation is complete.
- Recommended minimum wall box depth is 2-3/4 in.
- Use this switch with copper or copper-clad wire only.

ADDITIONAL RATINGS:

- Purpose of control: Operating Control
- Action Control Type: 1
- Pollution Degree: 2
- Impulse Voltage: 2500V
- Disconnection Type: Micro

Limited 2 year warranty & exclusions

For Leviton's limited product warranty, go to www.leviton.com. For a printed copy of the warranty, call 1-800-824-3005.

FOR CANADA ONLY

For warranty information and/or product returns, residents of Canada should contact Leviton in writing at Leviton Manufacturing of Canada ULC to the attention of the Quality Assurance Department, 165 Hymus Blvd, Pointe-Claire (Quebec),

FCC COMPLIANCE STATEMENT

The enclosed device complies with Part 15 of the FCC Rules. Operation is subject to the following two conditions: (i) This device may not cause harmful interference (ii) This device must accept any interference received, including interference that may cause undesired operation. Any changes or modifications not expressly approved by Leviton could void the user's authority to operate this equipment. This equipment has been tested and found to comply with the limits for a Class B digital device, pursuant to part 15 of the FCC Rules. These limits are designed to provide reasonable protection against harmful interference in a residential installation. This equipment generates uses and can radiate radio frequency energy and, if not installed and used in accordance with the instructions, may cause harmful interference to radio communications. However, there is no guarantee that interference will not occur in a particular installation. If this equipment does cause harmful interference to radio or television reception, which can be determined by turning the equipment off and on, the user is encouraged to try to correct the interference by one or more of the following measures:

- Reorient or relocate the receiving antenna.
- Increase the separation between the equipment and receiver.
- Connect the equipment into an outlet on a circuit different from that to which the receiver is connected.
- Consult the dealer or an experienced radio/TV technician for help.

FCC CAUTION

Any changes or modifications not expressly approved by Leviton Manufacturing Co., Inc., could void the user's authority to operate the equipment.

FCC SUPPLIER'S DECLARATION OF CONFORMITY

Model ZW15S - Z-Wave Switch is manufactured by Leviton Manufacturing Co., Inc. 201 N. Service Road, Melville, NY 11747. www.leviton.com. This device complies with part 15 of the FCC Rules. Operation is subject to the following two conditions: (1) This device may not cause harmful interference, and (2) this device must accept any interference received, including interference that may cause undesired operation.

IC STATEMENT

This device complies with Industry Canada license-exempt RSS standard(s). Operation is subject to the following two conditions: (1) this device may not cause interference, and (2) this device must accept any interference, including interference that may cause undesired operation of the device.

RF EXPOSURE AND CO-LOCATION

To comply with FCC OET Bulletin 65 and ICSED RF exposure limits for general population and uncontrolled exposure, this device shall be installed and operated with a minimum distance of 7.9 inches (20 cm) between the radiator and your body. Also, must not be co-located or operated in conjunction with any other antenna or transmitter.

PATENT INFORMATION

Patents covering this product, if any, can be found on leviton.com/patents.

COPYRIGHT AND TRADEMARK INFORMATION

Decora and Decora Smart are the registered trademarks of Leviton Manufacturing Co., Inc., registered in the U.S., Canada, Mexico and China. Z-Wave and Z-Wave Plus are registered trademarks of the Z-Wave Alliance. Use herein of other third party trademarks, service marks, trade names, brand names and/or product names are for informational purposes only, are/ may be the trademarks of their respective owners; such use is not meant to imply affiliation, sponsorship, or endorsement. No part of this document may be reproduced, transmitted or transcribed without the express written permission of Leviton Manufacturing Co., Inc.

Customization

Status LED

Follow the below steps to change the functionality of the Status LED.

Status LED ON when load is ON:

1. Enter setup mode (see page 10).
2. Tap the top rocker 4 times. The Status LED will quickly flash GREEN/AMBER.
3. Tap the top rocker 1 time. The Status LED will flash GREEN 4 times to confirm the selection.

Status LED ON when load is OFF (default)

1. Enter setup mode (see page 10).
2. Tap the top rocker 4 times. The Status LED will quickly flash GREEN/AMBER.
3. Tap the top rocker 2 times. The Status LED will flash AMBER 4 times to confirm the selection.

Status LED OFF:

1. Enter setup mode (see page 10).
2. Tap the top rocker 4 times. The Status LED will quickly flash GREEN/AMBER.
3. Tap the top rocker 3 times. The Status LED will flash RED 4 times to confirm the selection.

9

Advanced options

Your device supports Over-the-Air updates using the Z-Wave Firmware Update Meta Data command class for standardized firmware updates. The following advanced options can be configured over the Z-Wave network by a compatible Z-Wave controller.

Status LED configuration

- Parameter No: 7; Length: 4 Byte
- Valid Values = 0 to 255 (default 255)
 - 0 = Status LED OFF
 - 254 = Status LED ON when load is ON
 - 255 = Status LED ON when load is OFF (locator mode)

ZW15S supported associations and supported Z-Wave classes

Group number: 1

- Maximum Nodes: 5
- Name: Lifeline
 - A notification is sent to the nodes in this association group when a Lifeline event occurs.
 - All nodes in the association group receive notification of status changes.
- Profile: 0x0001
- Command Class Associations
 - 0x5A01: COMMAND_CLASS_DEVICE_RESET_LOCALLY, DEVICE_RESET_LOCALLY_NOTIFICATION
 - 0x2503: COMMAND_CLASS_SWITCH_BINARY_V2, SWITCH_BINARY_REPORT_V
 - 0x8703: COMMAND_CLASS_INDICATOR (0x87) and INDICATOR_REPORT_V3 (0x03)

Group number: 2

- Maximum Nodes: 5
- Name: Binary switch set
 - All nodes in the association group receive a command based on ON/OFF button presses.
- Profile: 0x2001
- Command Class Associations
 - 0x2501: COMMAND_CLASS_SWITCH_BINARY.SWITCH_BINARY_SET

13

Advanced options (continued)

Group number: 3

- Maximum Nodes: 5
- Name: Basic set
 - All nodes in the association group receive a command based on ON/OFF button presses.
- Profile: 0x2001
- Command Class Associations
 - 0x2001: COMMAND_CLASS_BASIC.BASIC_SET

BASIC command class is mapped to the binary switch class, as follows:

- Basic Set maps to Binary Switch Set
- Basic Get maps to Binary Switch Get
- Basic Report maps to Binary Switch Report

Supports the following additional Z-Wave classes:

• SWITCH BINARY	v2	secured
• Z-WAVE PLUS INFO	v2	non-secured
• ASSOCIATION	v2	secured
• ASSOCIATION GRP INFO	v3	secured
• S2 SECURITY	v1	non-secured
• VERSION	v3	secured
• MANUFACTURER SPECIFIC	v2	secured
• CONFIGURATION	v4	secured
• DEVICE RESET LOCALLY	v1	secured
• POWERLEVEL	v1	secured
• BASIC	v2	secured
• SCENE ACTUATOR CONF	v1	secured
• SCENE ACTIVATION	v1	secured
• TRANSPORT SERVICE	v2	non-secured
• FIRMWARE UPDATE MD	v5	secured
• SUPERVISION	v1	non-secured
• INDICATOR	v3	secured
• MULTI CHANNEL ASSOCIATION	v3	secured

14

ZW15S indicator function

Supports the indicator command class with indicator ID 0x50 (identify). When an indicator command is received the Status LED on the device will quickly flash GREEN.

13

Factory default

When removing a Z-Wave device from the network, it is best practice to use the exclusion process. In situations where a device needs to be returned to factory default settings, follow the steps below. Please use this procedure only when the network primary controller is missing or otherwise inoperable.

1. Hold the top rocker for 14 seconds: After the first 7 seconds, the Status LED will turn AMBER. Continue holding until the Status LED flashes RED/AMBER then release.
2. The device will reset.

What to do if...

Switch is wired and installed but the light does not respond:

- Make sure power has been restored at the circuit breaker.
- Verify wiring connections are correct.

When power is applied to the switch, the light is OFF and does not respond:

- For proper operation the switch needs a line (hot), neutral, load, and ground connection.
- Confirm the white conductor is a neutral.

My lights work but they are flickering:

- Unscrew light bulb and test with voltage tester to make sure a line (hot) and neutral wire are connected to the light.

How do I clean my device?

- To clean, use a damp cloth with mild soap. DO NOT use disinfecting products, including foggers, sprays or other types of atomized cleaning agents.

Visit leviton.com/decorasmart or contact technical services for additional help.

15

16

ARTWORK PRINT SPECIFICATIONS



PART NUMBER DI-000-ZW15S-02A **REV** _____ **DESCRIPTION** Instruction Sheet

* Artwork must be printed at 100% (1:1 scale)

Material Specifications: North America Suppliers

- * Thickness: 0.0028
- * Material: 60lb Gloss Text Paper
- * Recycled Content: N/A
- * Exterior Brightness: 90%
- * Finish: Gloss - 72

Material Specifications: Asia Suppliers

- * Thickness: 84 um
- * Material: 105G Coated Book Paper
- * Recycled Content: N/A
- * Exterior Brightness: N/A
- * Finish: N/A

* For manuals - designates cover specifications

Color:

No. of Color(s): 6 over 6

1: PMS376

2: PMS2758 Spot

3: CMYK

4: _____ CMYK

Fonts:

1: Scene Std

2: _____

3: _____

4: _____

Die Line Key:

- Perforate
- Die Cut
- Fold Line
- Kiss Cut
- Cellophane
- Glue

MANUAL INTERIORS / BINDERY / FOLD SCHEME :

Body Material: _____

Thickness: _____

Bindery

- Die cut Fold Saddle Stitch
- Perfect Bind Drill Trim

No. of Color(s): _____ over _____

1: _____

2: _____ Spot

3: _____

4: _____ CMYK

Fonts:

1: _____

2: _____

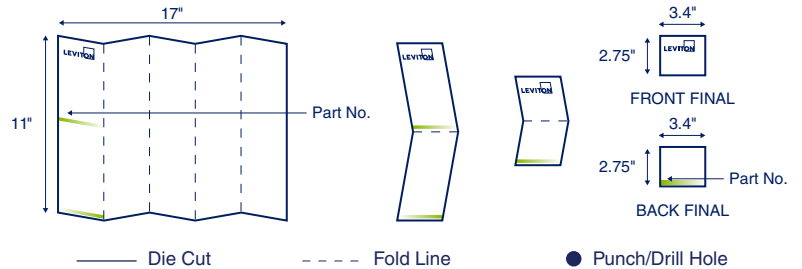
3: _____

4: _____

PROCESS :

- Offset Flexo
- Other _____
- Line Screen: _____
- Angle: _____
- Resolution: _____

DIMENSIONS / FOLD SCHEME / BINDERY DIAGRAM



COMMENTS :

The information in this document is the exclusive PROPRIETARY property of LEVITON MANUFACTURING COMPANY, INC. It is disclosed with the understanding that acceptance or review by the recipient constitutes an undertaking by the recipient. (1) to hold this information in strict confidence, and (2) not to disclose, duplicate, copy, modify or use the information for any purpose other than that for which disclosed.

FOR LEVITON USE ONLY

- Approvals: Plant 08 J. Tang QA S. Barbour PM J. Shurte
cc: C. Houyong Mktg G. Rhoades Eng R. Gumina S & A B. Grande
 Cust Provide to J. Shurte Other V. LoNigro Other C. Buttitta

PN-ARN: SA0049-7457 ECR Number: _____ Pilot Rev: X7

Artist: Z. Reisman Released Artwork Format: Production PDF Artwork Release Date: 12/19/23

Notes: _____ Vector Photo Color Corrected Photo