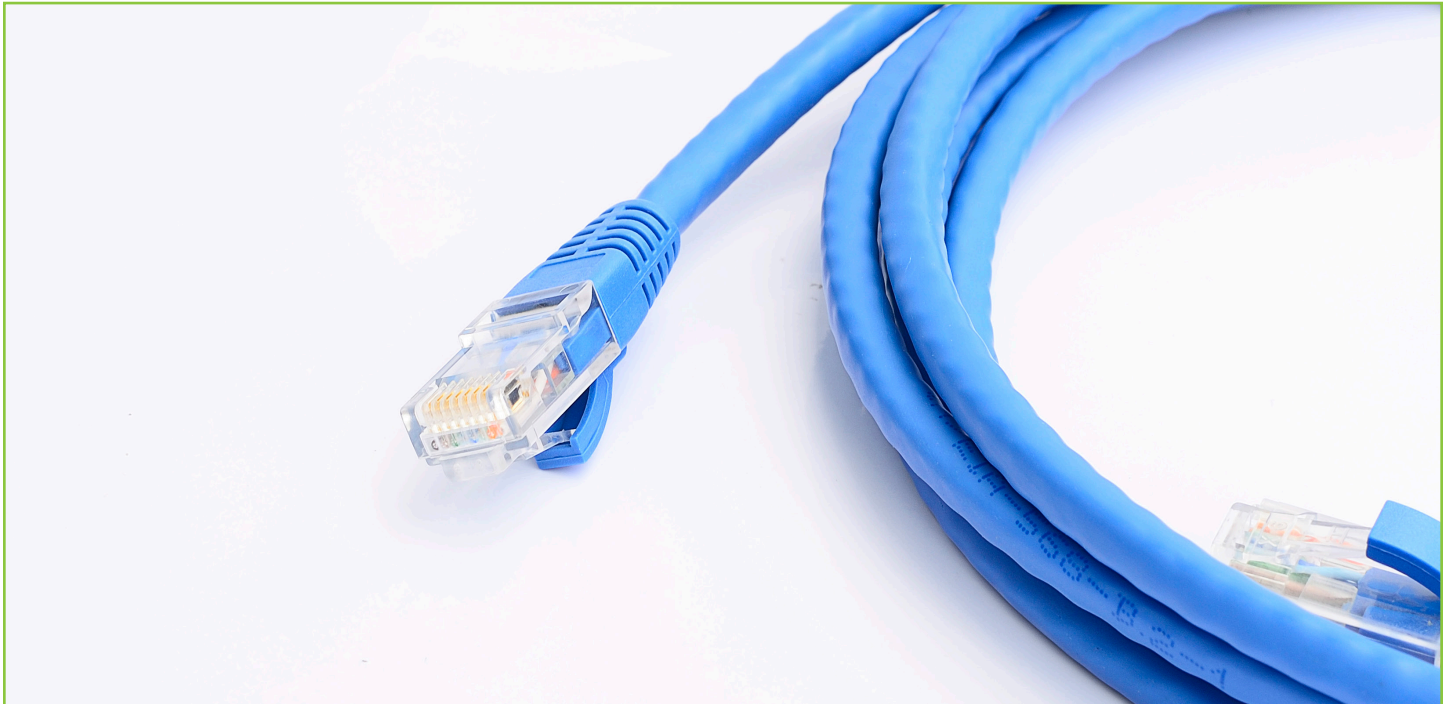


## 8 Port PoE Switch



### A new power source and mounting kit

The POENS-8PT combines a small, high efficiency 8-Port 10/100Mbps Ethernet switch with IEEE 802.3af Power over Ethernet (PoE) capability on all 8 ports. It can be used to provide power to up to 7 Leviton OmniTouch 7 touchscreens (one port must be connected to the network). When connecting an OmniTouch 7 touchscreen to the network, a UTP Cat-5/5e (4-pair) cable is required for operation. Run the cable between the location of the POENS-8PT and the location of the OmniTouch 7 touchscreen.

The POENS-8PT is a Power Source Equipment (PSE) device that is fully compatible with Powered Devices (PD) that comply with the IEEE 802.3af standard. The PoE ports on the POENS-8PT can also be used to power other Powered Devices (PD), such as the Leviton BitWise BC4, Leviton Intercom Door Station, OT7 Leviton PoE IP cameras, PoE Wireless Access Points, PoE Printers, etc.) without requiring additional power on the network.

Each of the PoE ports can provide 15.4 Watts of power as well as 10/100M data transmission through the traditional UTP cable to the Powered Device.

The POENS-8PT is supplied with an external 48VDC power adaptor. No configuration is required and installation is quick and easy. Support for automatic MDI / MDI-X on all of the ports eliminates the need for a crossover connection to another switch or hub. Auto-negotiation on each port senses the link speed (100 Mbps or 10 Mbps) of a network device and intelligently adjusts for compatibility and optimal performance.



**Key points to note:**

- Includes 8-Port PoE Network Switch with AC Power Adapter
- Powers up to seven Leviton OmniTouch 7 Touchscreens (one port must be connected to the network).
- Can power other Powered Devices such as the Leviton BitWise BC4, Leviton Intercom Door Station, Leviton PoE IP cameras, PoE Wireless Access Points, PoE Printers, etc. without requiring additional power on the network

**Standards**

IEEE 802.3 10BASE-T Ethernet, IEEE 802.3u 100BASE-TX Fast Ethernet, IEEE 802.3x Full Duplex Flow Control, IEEE 802.3af Power over Ethernet

**Protocol**

CSMA/CD

**Data Transfer Rate**

Ethernet: 10Mbps (half-duplex), 20Mbps (full-duplex)  
Fast Ethernet: 100Mbps (half-duplex), 200Mbps (full-duplex)

**Network Cables**

10BASE-T: 2-pair UTP Cat 3, 4, 5 up to 100 meters.  
100BASE-Tx: 2-pair UTP Cat 5, 5e up to 100 meters.

**Number of Ports**

8 x 10/100Mbps RJ-45 ports with 8 PoE enabled ports

**AC power adaptor**

Input: 100VAC - 240VAC, 50Hz - 60Hz  
Output: 48VDC, 2.5A

**Power Consumption**

6.4 watts, maximum (with no Powered Devices connected) 112 watts (8 PoE ports fully loaded)

**Temperature/Humidity**

Operation: 32 °F - 104 °F; Storage: 14 °F - 158 °F  
Relative Humidity: 5% - 95%

**Dimensions**

16cm W x 9.4cm D x 2.1cm H

**Ordering Information**

Description	Cat. No.
8-Port PoE Network Switch	POENS-8PT
PoE Switch Mounting Kit	POEMP-KIT

**Leviton Manufacturing Co., Inc.  
Global Headquarters**

201 North Service Road, Melville, NY 11747-3138  
Tel: 1-800-323-8920 Fax: 1-800-832-9538  
Tech Line: (8:30AM-7:00PM ET Monday-Friday): 1-800-824-3005

**Leviton Manufacturing Co., Inc.  
Energy Management, Controls and Automation**

4330 Michoud Blvd., New Orleans, Louisiana, 70129  
Tel: 1-504-736-9810 Fax: 1-504-253-2954

Visit our website at: [leviton.com/emca](http://leviton.com/emca)

©2016 Leviton Manufacturing Co., Inc. All rights reserved.

